



PRODUCTS™

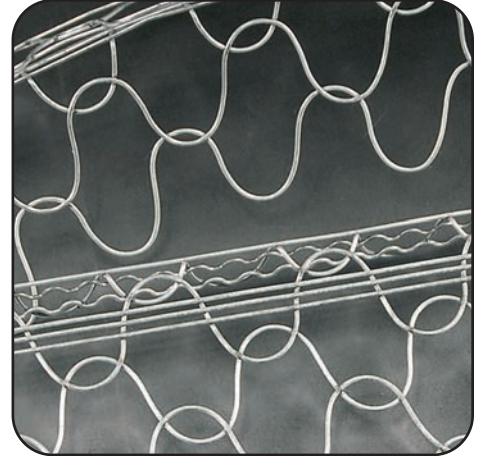
WIRE PRODUCTS

Materials:

- Galvanized (17.5 Gauge Wire) G-60 Coating
- Stainless Steel (17.5 Gauge Wire) 316L Stainless 18% Chromium

ASTM Codes:

- A580/A580M (Stainless Steel)
- A641/A641M (Galvanized Wire)
- A653/A653M (Galvanized Coating)
- A924 (Galvanized Steel)
- C1047 (Drywall)
- C1063 (Accessories)
- C1063 (Accessories)
- C841 (Interior Furring & Lathing)



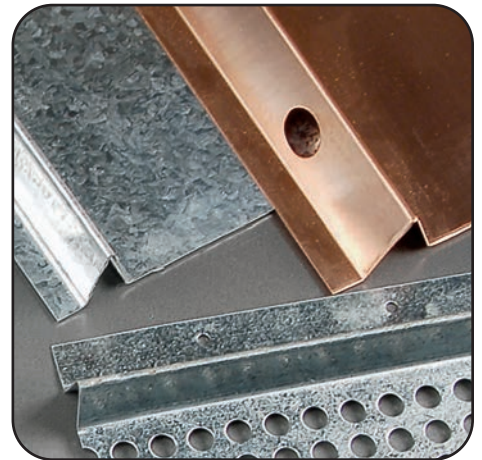
METAL PRODUCTS

Materials:

- Copper (24 Gauge – 0.0216" – 16 oz.)
- Galvanized Steel (26 Gauge – 0.0217" – G90)
- Zinc (24 Gauge - 0.0200" - #190)
- Stainless Steel (26 Gauge – 0.0187" – SAE 304) #2B (Dull Finish), #4 (Brushed Finish), #8 (Mirror Finish)
- Aluminum (22 Gauge – 0.0253" – Alloy 5052 H32)

ASTM Codes:

- A580M (Stainless Steel)
- A653/A653M (Galvanized Coating)
- A924 (Galvanized Steel)
- B152/B152M (Copper)
- B209 (Aluminum Sheet)
- B221-14 (Aluminum)
- B69 (Zinc)
- C1047 (Drywall)
- C1063 (Accessories)
- C841 (Interior Furring & Lathing)



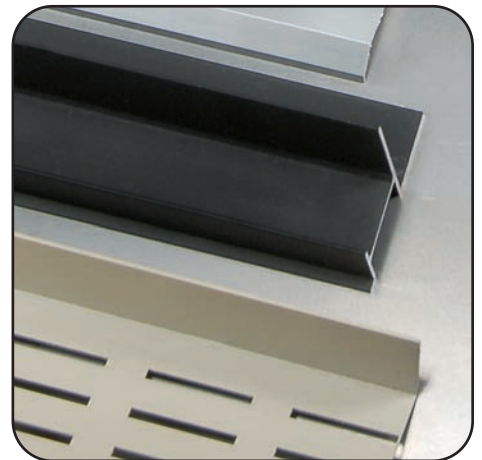
EXTRUDED ALUMINUM PRODUCTS

Materials:

Aluminum Alloy (6063 T-5)

ASTM Codes:

- B221-14 (Aluminum)
- B136 (Anodize Coating)
- B244 (Anodize Coating)
- C1063 (Accessories)
- D4214 (Paint Films)



Note: Standard length is 10 feet. Additional lengths available upon request.