

Stockton PRODUCTS



**STICK
WITH
STOCKTON**

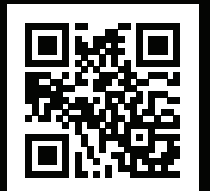
NEW

Fiber Cement Board Moldings

Stockton

PRODUCTS™

1-87-STOCKTON
Fax: (702) 651-1303
www.StocktonProducts.com





PRODUCTS™

Fiber Cement Board Moldings From Stockton Products™

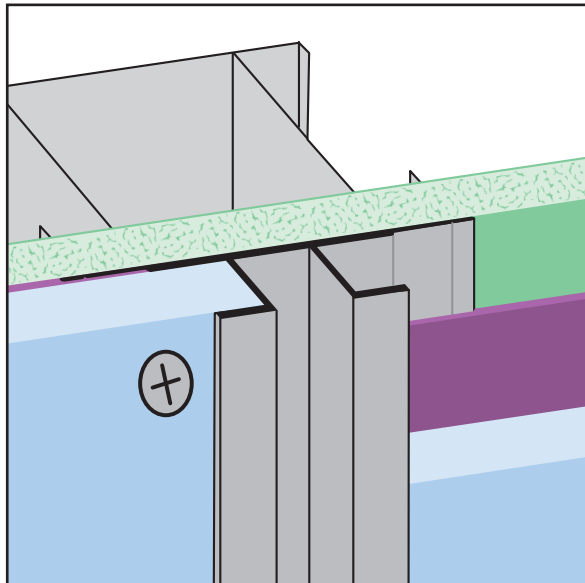
Stockton Products™ now offers a complete line of extruded aluminum moldings for use with 5/16" Fiber Cement Board panels.

Construction using weather-resistant Fiber Cement Board siding has become a popular choice among architects and builders, particularly for extreme weather regions. Known for its versatility, durability and performance, construction using Fiber Cement Board is an excellent choice for all types of commercial projects.

Stockton Products' line of moldings gives you the ability to enhance the aesthetic look of any Fiber Cement Board project as well as providing a solution for any condition and detail when using this style of construction.

Featuring

- 6063 T5 extruded aluminum
- Standard finish clear anodized
- Other finishes available, contact factory
- 10' cut length
- Factory curving available
- Factory fabricated intersections available

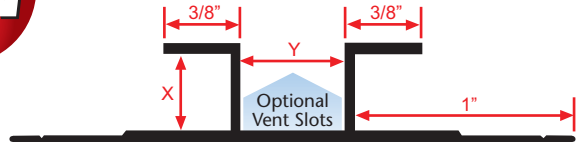


CR-FCB: Channel Reveal for Fiber Cement Board

- Available Vented or No Vents

A decorative reveal used to create an aesthetically pleasing vertical accent between panels. Available vented for soffit venting requirements.

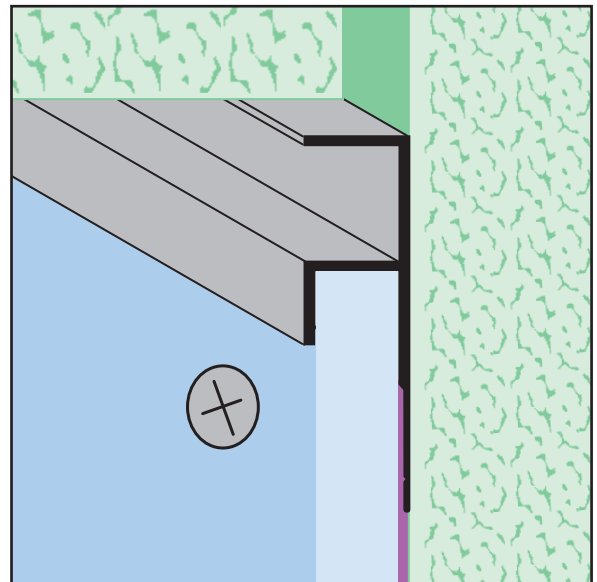
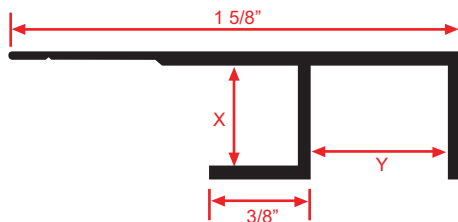
Note: Do not use in a horizontal condition.



Length	X Size	Y Size
10'	3/8"	1/2"

F MOLD-FCB: F Mold for Fiber Cement Board

Creates a decorative reveal in a wall/soffit transition.

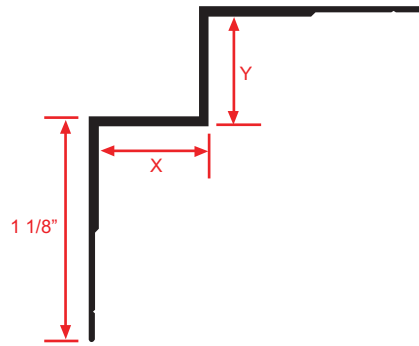


Length	X Size	Y Size
10'	3/8"	1/2"

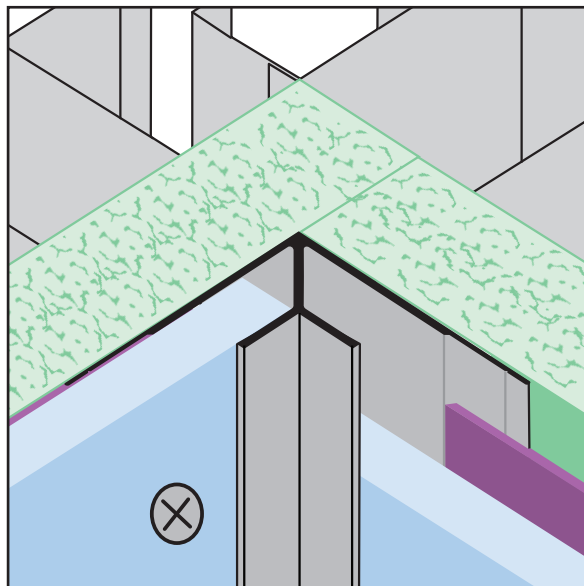
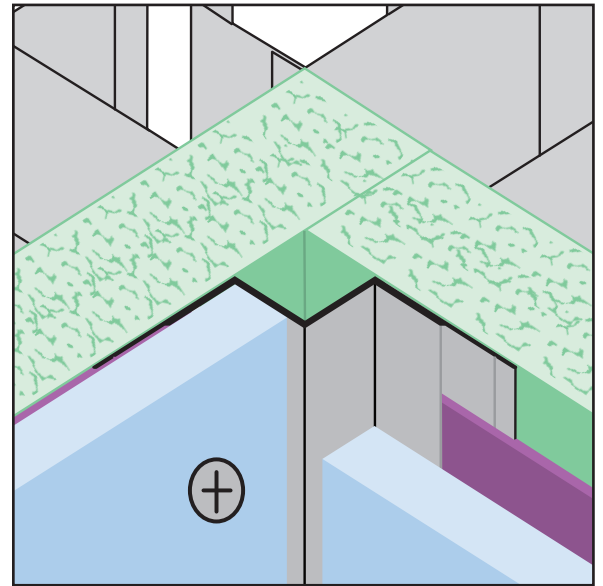
1-87-STOCKTON

IC-FCB: Inside Corner for Fiber Cement Board

Used in an inside corner condition where two fiber cement boards meet.

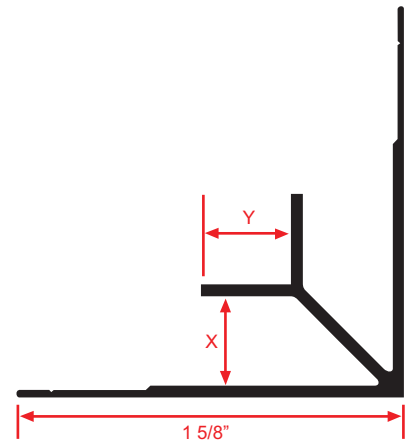


Length	X Size	Y Size
10'	1/2"	1/2"



ICR-FCB: Inside Corner Reveal for Fiber Cement Board

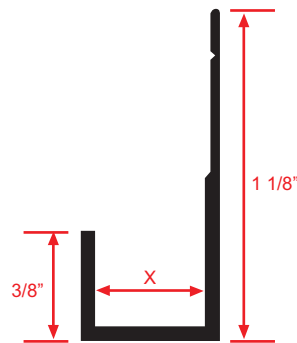
An inside corner trim that creates a decorative 3/8" reveal at an inside corner condition.



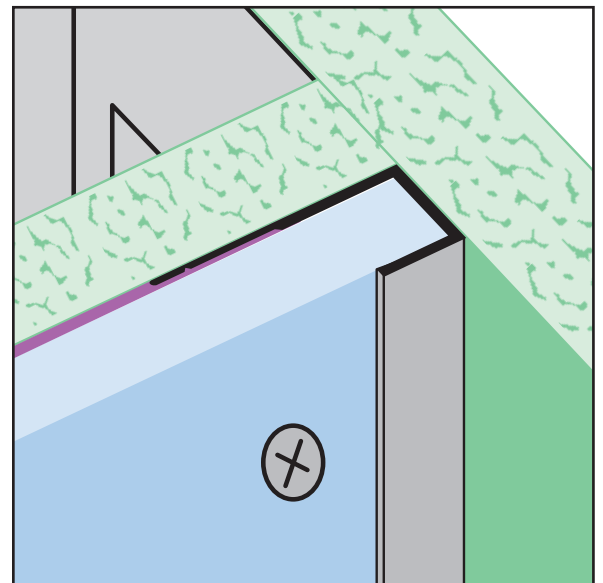
Length	X Size	Y Size
10'	3/8"	3/8"

J MOLD-FCB: J Mold for Fiber Cement Board

Used as a termination molding to case off the fiber cement panel.



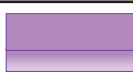
Length	X Size
10'	3/8"



KEY



WALL SHEATHING



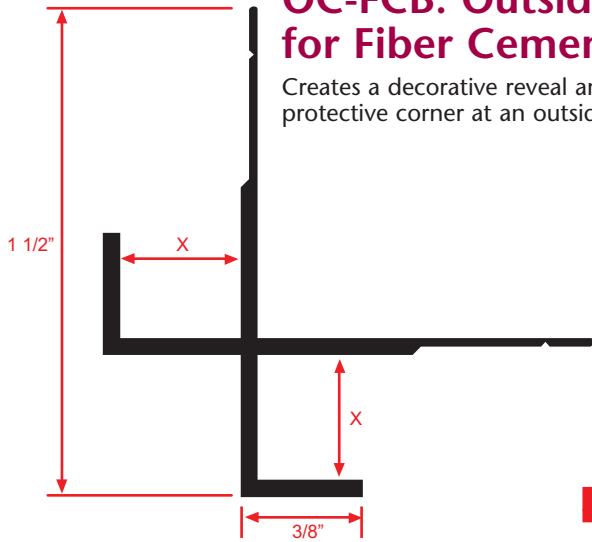
WATERPROOF BARRIER



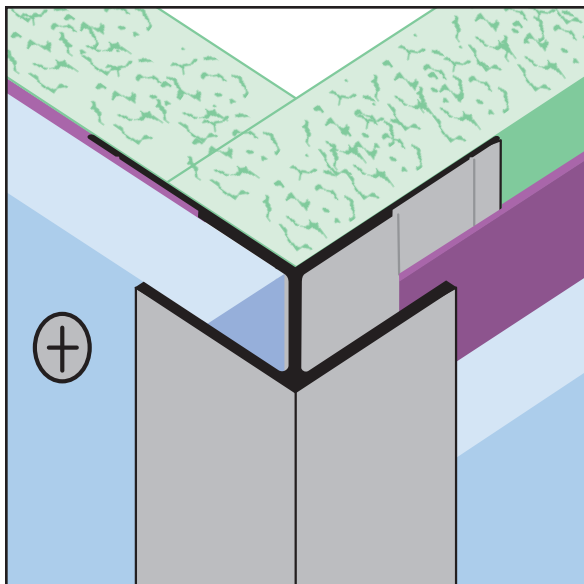
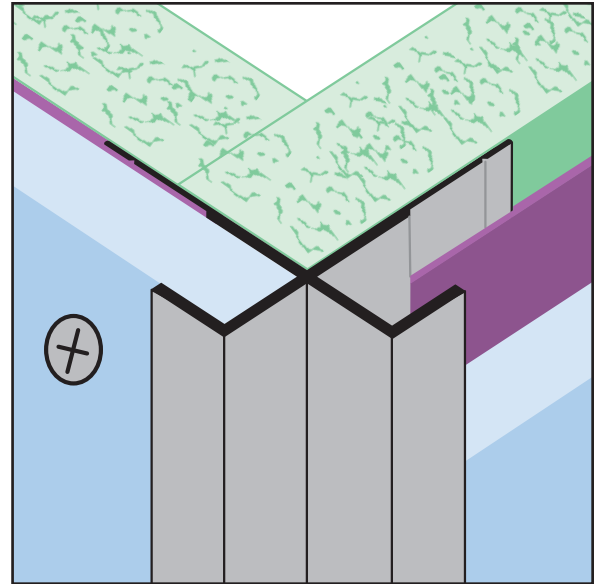
FIBER CEMENT

OC-FCB: Outside Corner for Fiber Cement Board

Creates a decorative reveal and a high strength protective corner at an outside corner condition.



Length	X Size
10'	3/8"

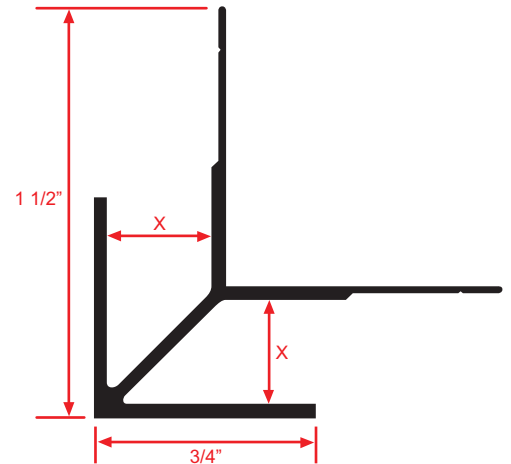


OCG-FCB: Outside Corner Guard for Fiber Cement Board

Creates a decorative high strength corner at an outside corner condition.



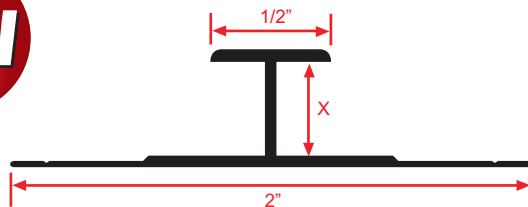
Length	X Size
10'	3/8"



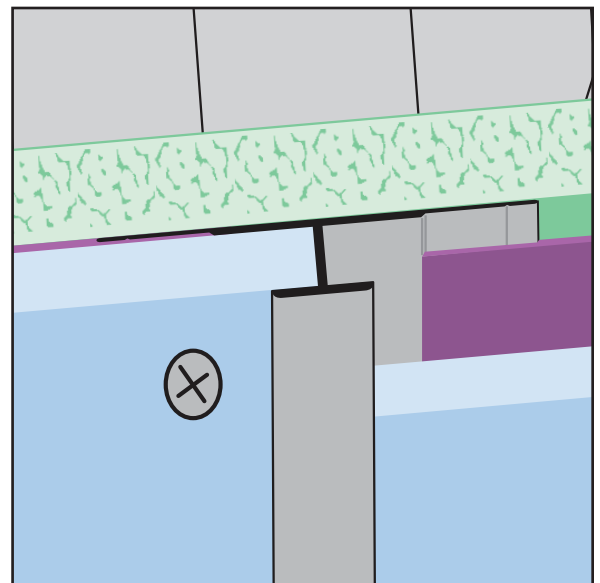
PJ-FCB: Panel Joiner for Fiber Cement Board

A functional trim piece used to join two panels together in a vertical condition.

Note: Do not use in a horizontal condition.

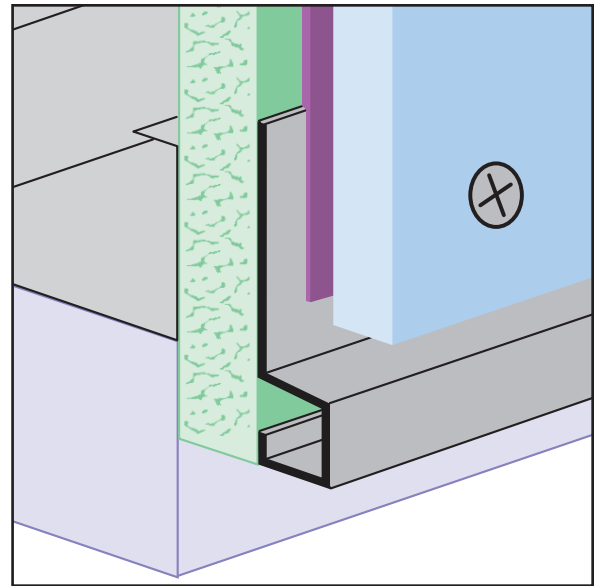
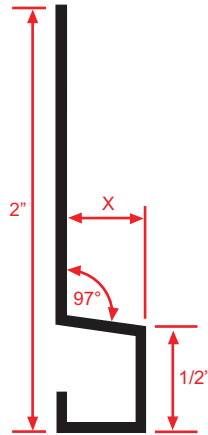


Length	X Size
10'	3/8"



SB-FCB: Starter Base for Fiber Cement Board

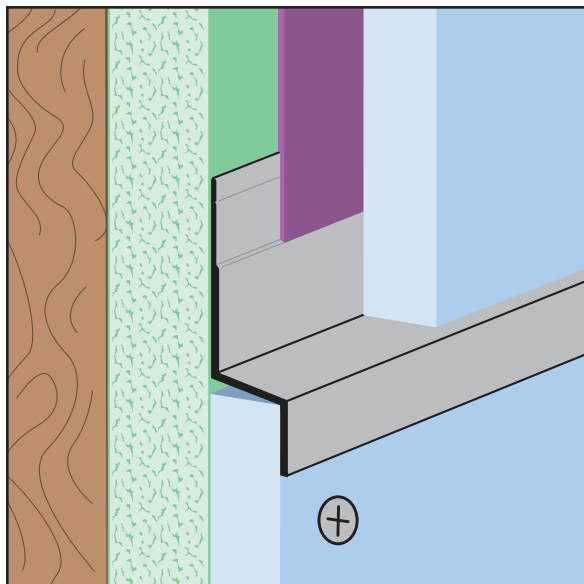
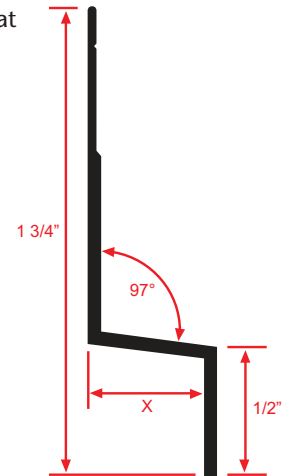
A functional starter trim piece for the fiber cement panel that also provides a weep point for moisture.



Length	X Size
10'	3/8"

WS-FCB: Weep Screed for Fiber Cement Board

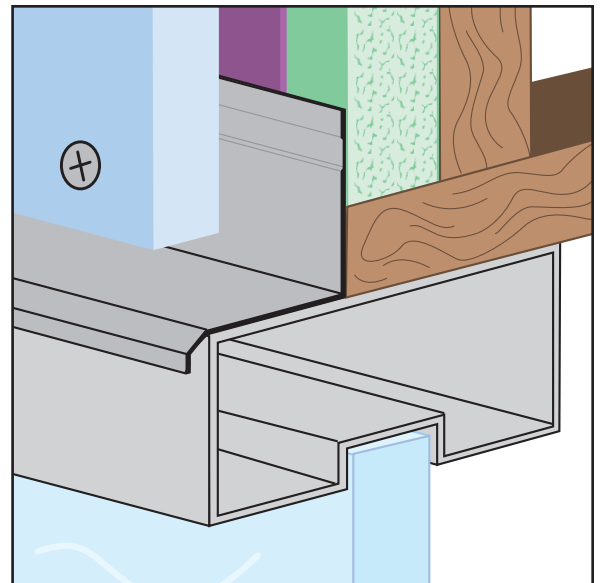
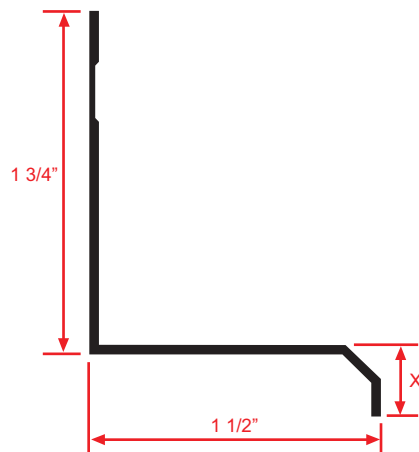
A decorative reveal that creates a weep point that allows moisture to weep out and away from the fiber cement panels.



Length	X Size
10'	1/2"

WHD-FCB: Window Head Drip for Fiber Cement Board

A multi-use drip molding that can be used at window and door heads, as well as at the foundation.



Length	X Size
10'	3/8"



Stockton Products™ Fiber Cement Board Moldings



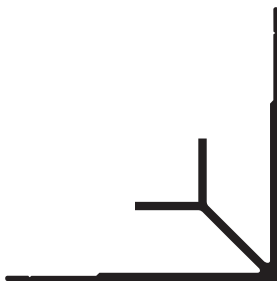
CR-FCB:
Channel Reveal



F MOLD-FCB:
F Mold



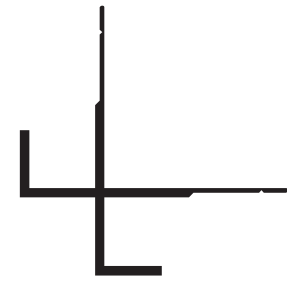
IC-FCB:
Inside Corner



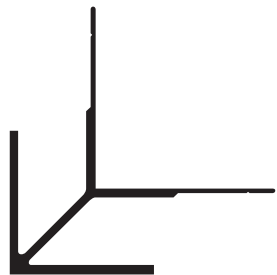
ICR-FCB:
Inside Corner Reveal



J MOLD-FCB:
J Mold



OC-FCB:
Outside Corner



OCG-FCB:
Outside Corner Guard



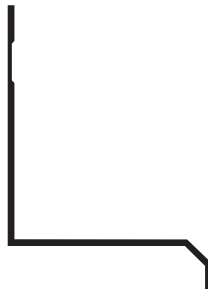
PJ-FCB:
Panel Joiner



SB-FCB:
Starter Base



WS-FCB:
Weep Screenshot



WHD-FCB:
Window Head Drip

Featuring

- 6063 T5 extruded aluminum
- Standard finish clear anodized
- Other finishes available, contact factory
- 10' cut length
- Factory curving available
- Factory fabricated intersections available

www.StocktonProducts.com