



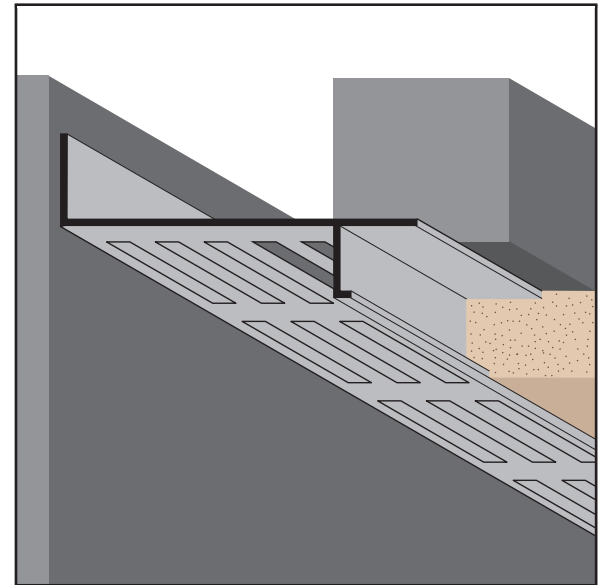
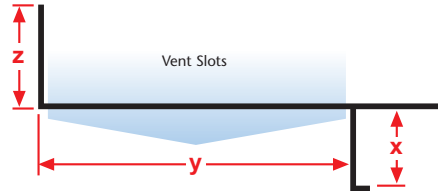
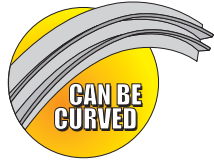
# EXTRUDED ALUMINUM

## WPM: Plaster Soffit Reveal Molding

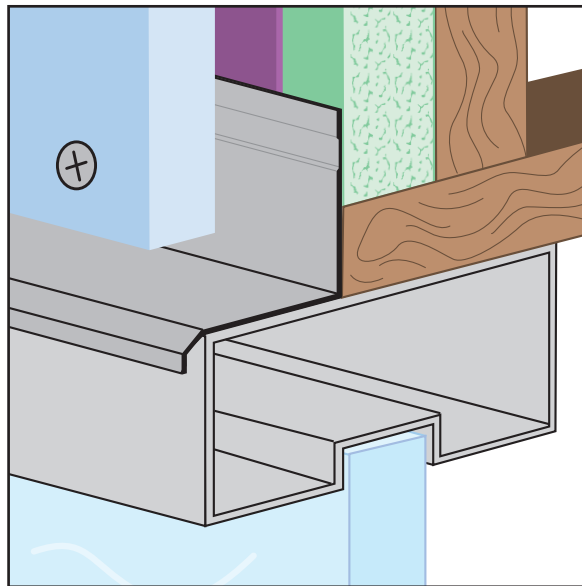
- With 1/8" x 1" Vent Slots

A screed that provides a plaster stop and creates a reveal at ceiling/wall conditions. Vented to provide free air flow at the perimeter.

**Note:** Available non-vented on special order.

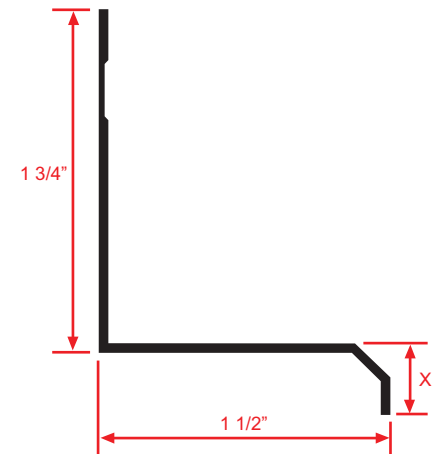


Length	X Size	Y Size	Z Size
10'	3/4"	2"	1"
		3"	
		4"	



## WHD-FCB: Window Head Drip for Fiber Cement Board

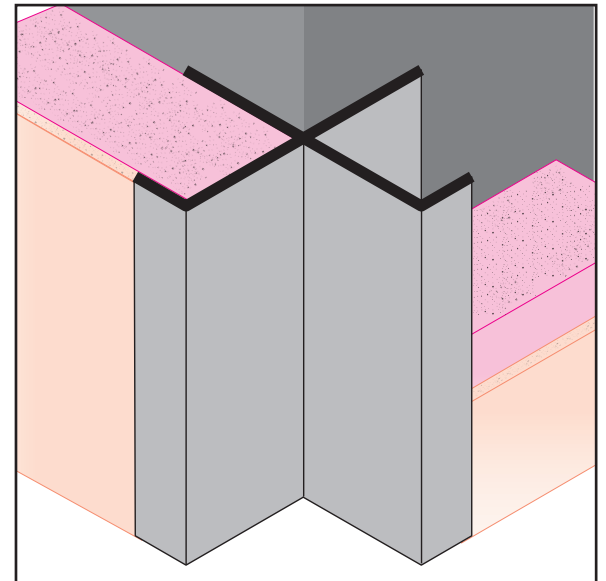
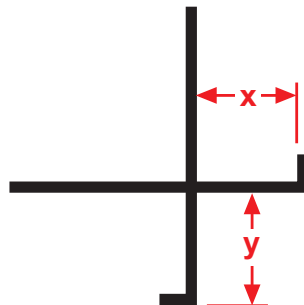
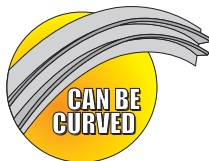
A multi-use drip molding that can be used at window and door heads, as well as at the foundation.



Length	X Size
10'	3/8"

## XDM: X Drywall Corner Molding

A drywall version of the "X" corner molding that creates a unique "inverse" corner look.



Length	X Size	Y Size
10'	1/2"	1/2"
	5/8"	5/8"