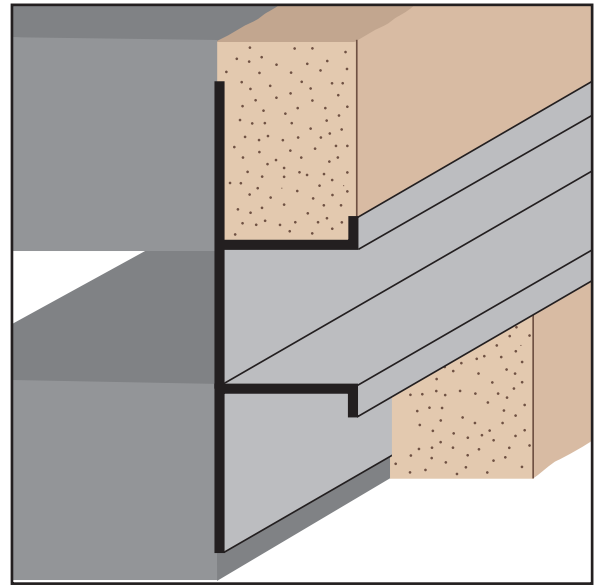
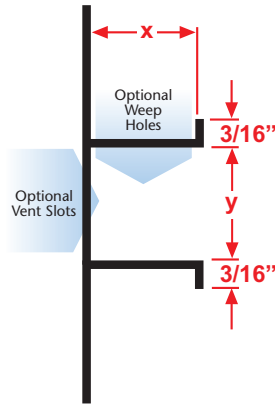
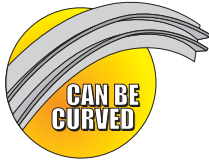


EXTRUDED ALUMINUM

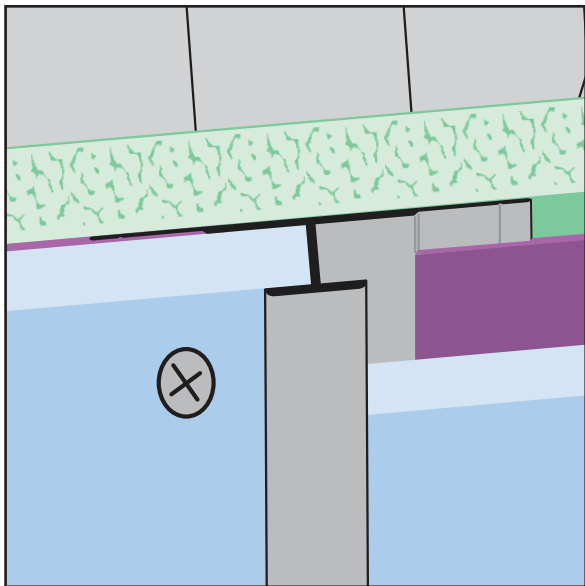


PCS DA: Plaster Channel Screed DA

• Available With 1/8" x 1" Vent Slots or No Vents
 A decorative reveal used as a plaster stop/control screed for direct applied and one coat systems.

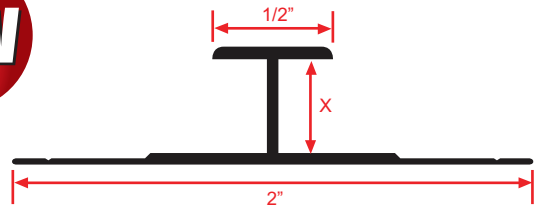


Length	X Size	Y Size
10'	3/8"	1/2"
		3/4"
		1"
		1 1/2"



PJ-FCB: Panel Joiner for Fiber Cement Board

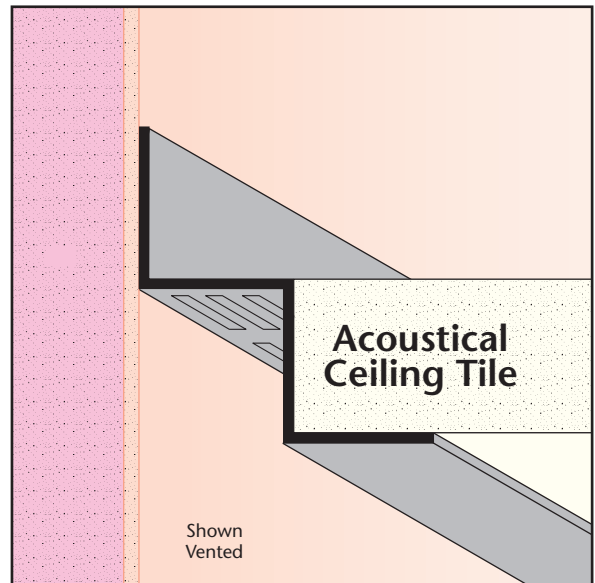
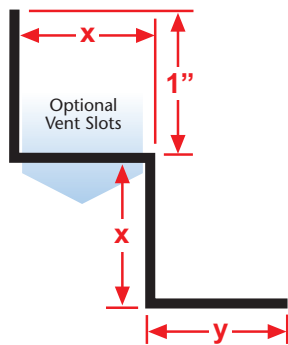
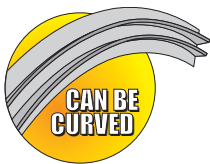
A functional trim piece used to join two panels together in a vertical condition.
Note: Do not use in a horizontal condition.



Length	X Size
10'	3/8"

RWM: "W" Reveal Molding

• Available With Vents or No Vents
 "W" style molding that creates a reveal at a wall and suspended/acoustical ceiling.



Length	X Size	Y Size
10'	3/4"	3/4"