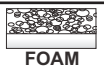
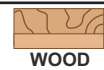
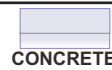


# EXTRUDED ALUMINUM

KEY



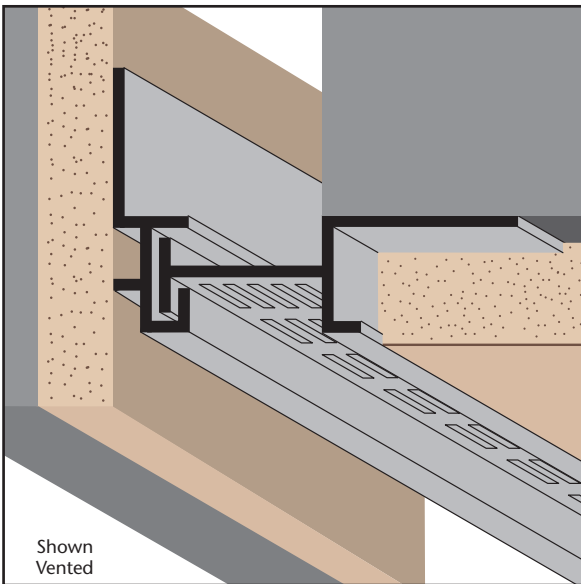
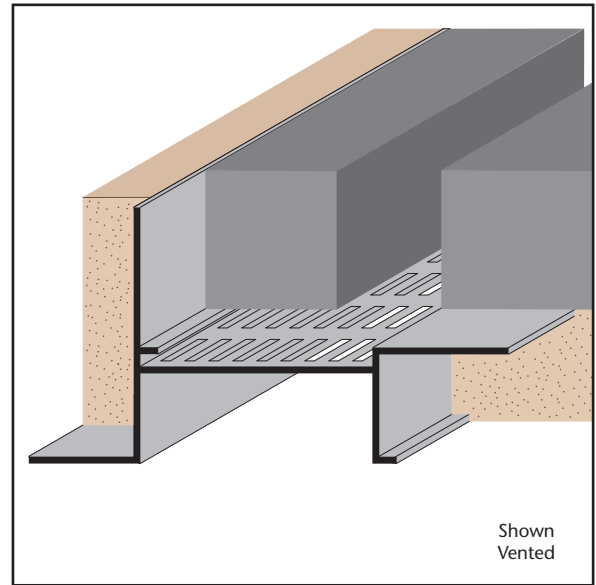
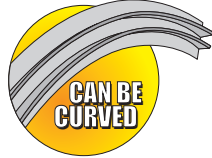
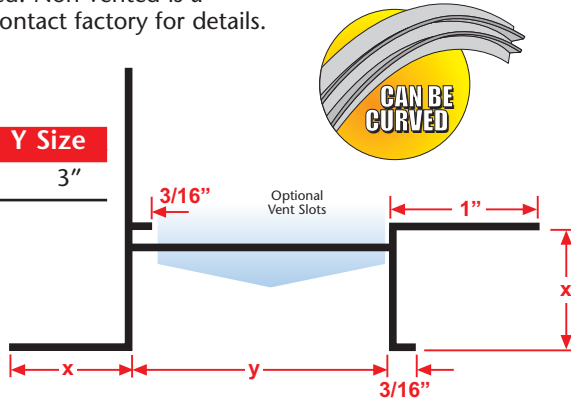
## DS300: Drip Scred 3" Reveal

- Available With 1/8" x 1" Vent Slots or No Vents

An aesthetically pleasing drip screed for conventional 3-coat stucco that functions as a plaster stop/drip edge and creates a reveal at the fascia/soffit corner condition.

**Note:** Available vented. Non-vented is a special order. Please contact factory for details.

Length	X Size	Y Size
10'	7/8"	3"



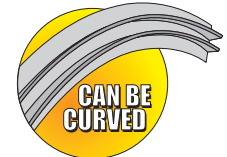
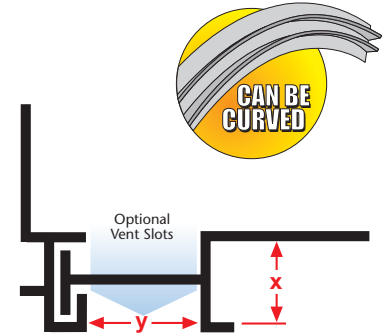
## EES 75-100 2PC: Plaster Edge Expansion Screed - 2 pc.

- Available With 1/8" x 1" Vent Slots or No Vents

A 2-piece plaster control screed that permits movement in a plaster soffit/wall condition.

**Note:** Available as a special order. Contact factory for lead times.

Length	X Size	Y Size
10'	3/4"	1"



## F MOLD-FCB: F Mold for Fiber Cement Board

Creates a decorative reveal in a wall/soffit transition.



Length	X Size	Y Size
10'	3/8"	1/2"

