



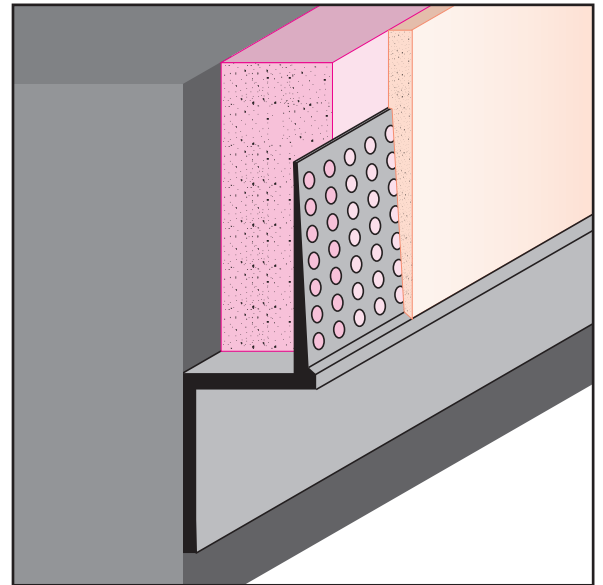
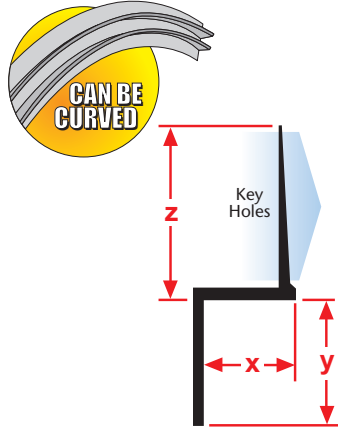
# EXTRUDED ALUMINUM

## DRMZ: Z Wall Reveal

• Available With 1/8" x 1" Vent Slots or No Vents  
 "Z" style with a taping flange that provides a reveal and a termination point for drywall at door frames, windows and wall bases. Includes key holes for proper plaster adhesion.

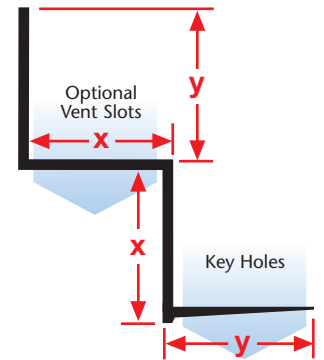
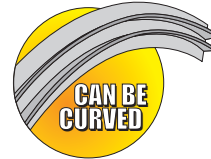
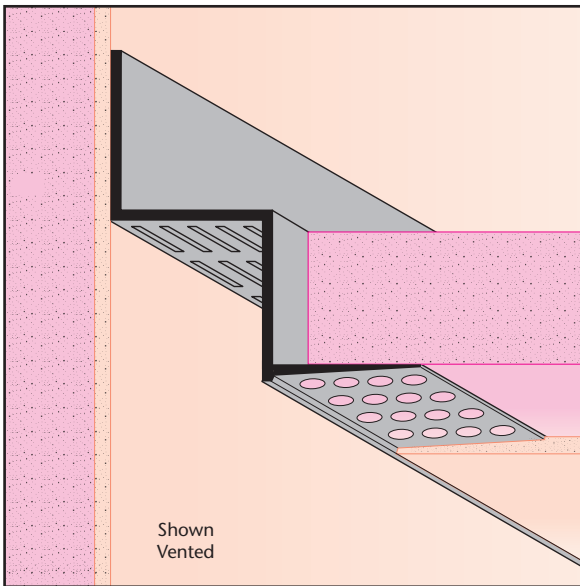
**Note:** Not all X, Y and Z combinations are available. Please contact factory for details.

| Length | X Size | Y Size | Z Size |
|--------|--------|--------|--------|
| 10'    | 1/4"   | 1/8"   | 7/8"   |
|        | 1/2"   | 1/4"   |        |
|        | 5/8"   | 3/8"   |        |
|        |        | 1/2"   |        |
|        |        | 5/8"   |        |
|        |        | 3/4"   |        |
|        |        | 1"     |        |
|        | 1 1/2" | 2"     |        |
|        |        | 3"     |        |
|        |        | 4"     |        |



## DRWT: "W" Reveal

• Available With Vents or No Vents  
 "W" style drywall molding with taping flange that creates a reveal at a wall/drywall ceiling condition. Includes key holes for proper plaster adhesion.



| Length | X Size | Y Size |
|--------|--------|--------|
| 10'    | 3/4"   | 3/4"   |

## DS: Drip Screed

• Available With 1/8" x 1" Vent Slots or No Vents  
 An aesthetically pleasing drip screed for conventional 3-coat stucco that functions as a plaster stop/drip edge and creates a reveal at the fascia/soffit corner condition.

**Note:** \*1 3/8" X Size available in 7/8" Y Size only.

**Note:** \*\*2" not available vented.

**Note:** Not all X Sizes (Depth) or Y Sizes (Reveal) combinations are available. Please consult with customer service.

| Length | X Size  | Y Size | Z Size |
|--------|---------|--------|--------|
| 10'    | 7/8"    | 3/4"   | 7/8"   |
|        | *1 3/8" | 7/8"   |        |
|        |         | **2"   |        |
|        |         | 3"     |        |

