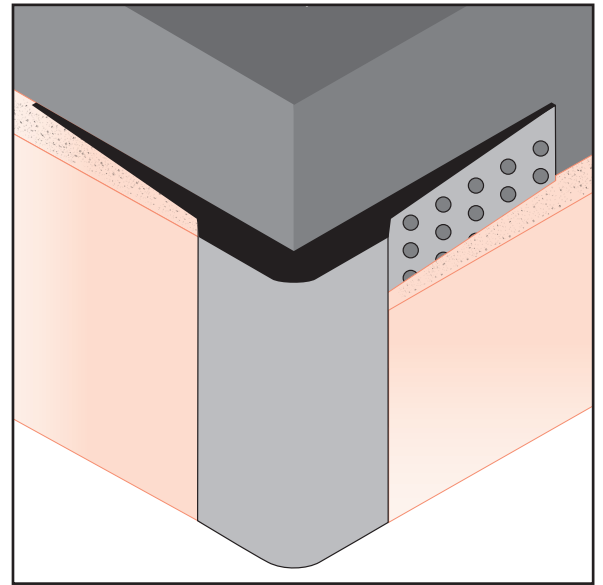
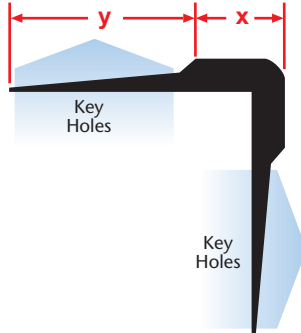
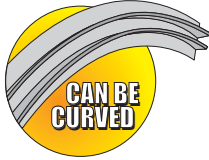




# EXTRUDED ALUMINUM

## DMCT: High Strength Corner Trim

A 90° outside corner with taping flanges for drywall. Provides a high strength corner for high impact areas. Includes key holes for proper plaster adhesion.



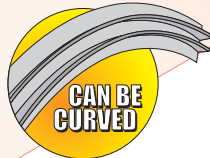
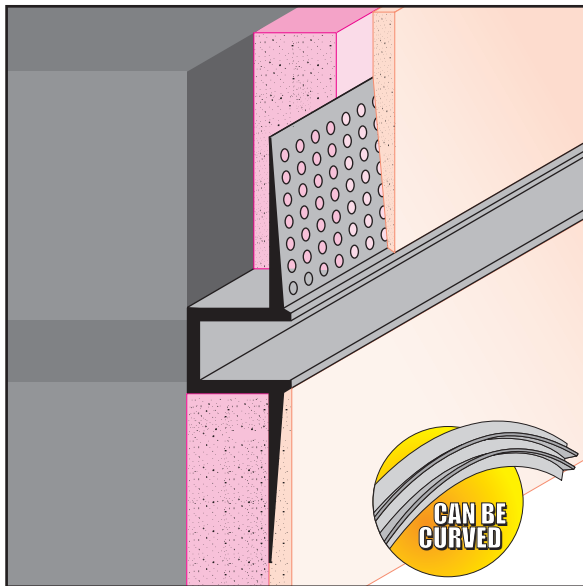
Length	X Size	Y Size
10'	3/8"	7/8"

## DRM: Wall Reveal

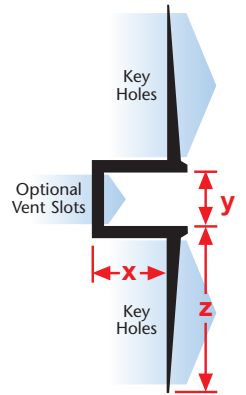
- Available With 1/8" x 1" Vent Slots or No Vents

A reveal molding with taping flanges that provides a decorative reveal in drywall. This molding is installed after the drywall board, greatly improving installation ease and time. Includes key holes for proper plaster adhesion.

**Note:** Not all X Sizes (Depth) or Y Sizes (Reveal) combinations are available. Please consult with customer service.

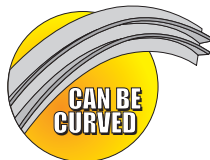


Length	X Size	Y Size	Z Size
10'	1/4"	1/8"	7/8"
	1/2"	1/4"	
	5/8"	3/8"	
		1/2"	
		5/8"	
		3/4"	
		1"	
		1 1/2"	
		2"	
		3"	



## DRMB: Reveal Base

"Z" style with a taping flange that provides a reveal and a termination point for drywall. Includes key holes for proper plaster adhesion.



Length	X Size	Y Size	Z Size
10'	5/8"	1"	7/8"
		1 1/2"	
		2"	
		2 1/2"	
		3"	
		3 1/2"	
		4"	

