

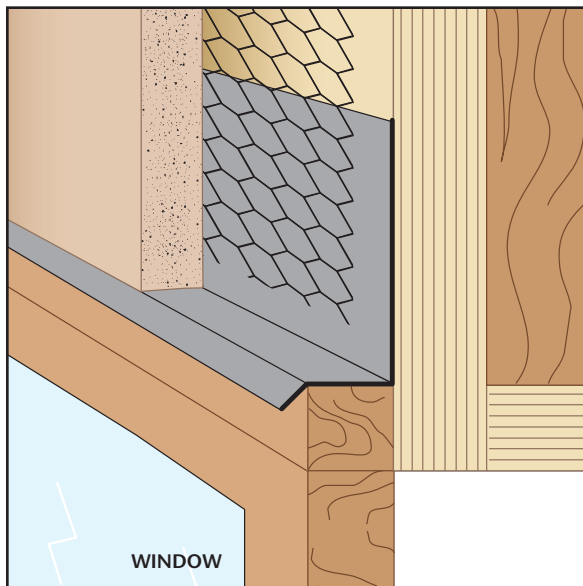
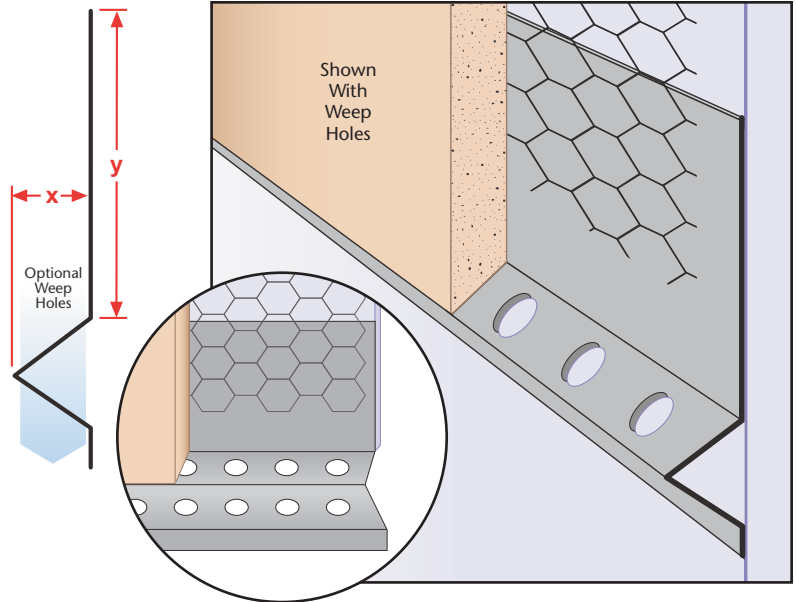
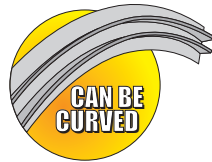


W-S: Weep Scred (#7)

- Superior™ Moisture Protection
- Available With 1/2" Weep Holes or No Holes
- Available in Copper, Galvanized Steel, Zinc, Stainless Steel or Aluminum

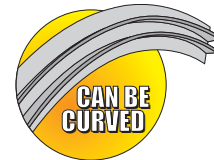
A traditional weep screed that provides a plaster stop and functions as a weep screed at the foundation. Available with and without weep holes. Matching factory miter-cut, solid-soldered inside and outside corners are available, giving you moisture management confidence throughout the entire installation.

Length	X Size	Y Size
10'	1/2"	3 1/2"
	3/4"	4 1/2"
	7/8"	5 1/2"
	1"	
	1 1/4"	
	1 3/8"	
	1 1/2"	

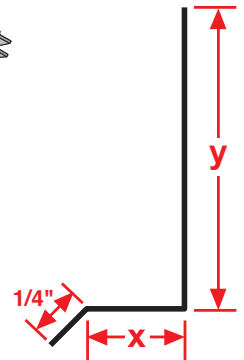


WTP: Window Termination Point

- Available in Copper, Galvanized Steel, Zinc, Stainless Steel or Aluminum
- Provides a termination/drip edge above exterior door and window heads.



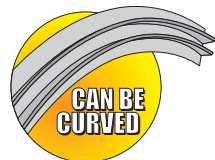
Length	X Size	Y Size
10'	1/2"	2"
	5/8"	2 1/2"
	3/4"	3"
	7/8"	4"
	1"	
	1 3/8"	



WVS: Wide V Scred

- Available in Copper, Galvanized Steel, Zinc, Stainless Steel or Aluminum

A decorative plaster control joint for conditions that require a small or minimal reveal.



Length	X Size	Y Size
10'	1/2"	1/2"
	3/4"	5/8"
	7/8"	
	1"	
	1 1/4"	
	1 3/8"	

