

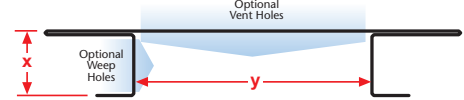
## PCS: Plaster Channel Screed

- Available With 1/8", 1/4" Vent Holes or No Vent
- Available in Copper, Galvanized Steel, Zinc, Stainless Steel or Aluminum

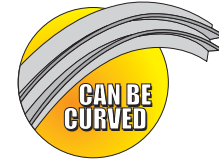
Channel screed style reveal that provides decorative shadow lines and accent stripes in an exterior finish. Has return keys for screeding of stucco. Can also be ordered vented for a perimeter air flow application.

**Note:** For Y Sizes over 2", use extruded aluminum or ECS.

**Note:** Aluminum is not available with 1/8" vent holes.



Length	X Size	Y Size
10'	3/8"	1/2"
	1/2"	3/4"
	5/8"	1"
	3/4"	1 1/2"
	7/8"	2"
	1"	
	1 3/8"	

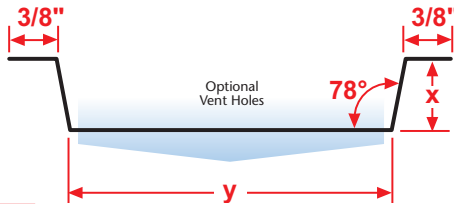


## PSV: Plywood Style Vent

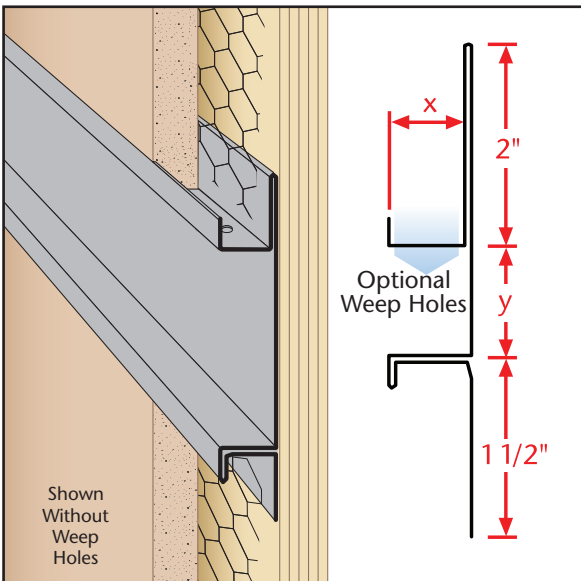
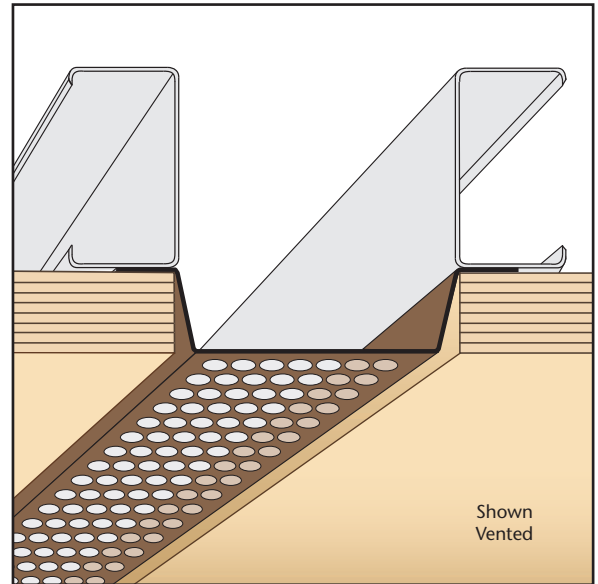
- Available With 1/8", 1/4" Vent Holes or No Holes
- Available Pre-Painted Brown or White; or Unpainted
- Galvanized Steel Only

Specialty soffit vent for use with plywood soffit conditions.

**Note:** Aluminum is not available with 1/8" vent holes.



Length	X Size	Y Size
10'	1/2"	2 1/4"



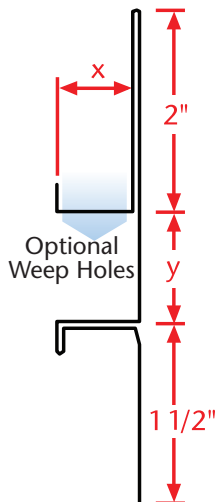
## PWC: Plaster Water-Resistant Channel

- SolidGround® Design For Moisture Protection
- Available With 1/8" Weep Holes or No Holes
- Available in Copper, Galvanized Steel, Zinc, Stainless Steel or Aluminum

One-piece SolidGround® design feature mitigates the concern of moisture penetration in a horizontal condition. Matching factory miter-cut, solid-soldered inside and outside corners are available, giving you moisture management confidence throughout the entire installation.

**Note:** For Y Sizes over 2", use extruded aluminum or OWC.

**Note:** Aluminum is not available with 1/8" vent holes.



Length	X Size	Y Size
10'	5/8"	1/2"
	3/4"	3/4"
	7/8"	1"
	1"	1 3/8"
	1 3/8"	1 1/2"
		2"