



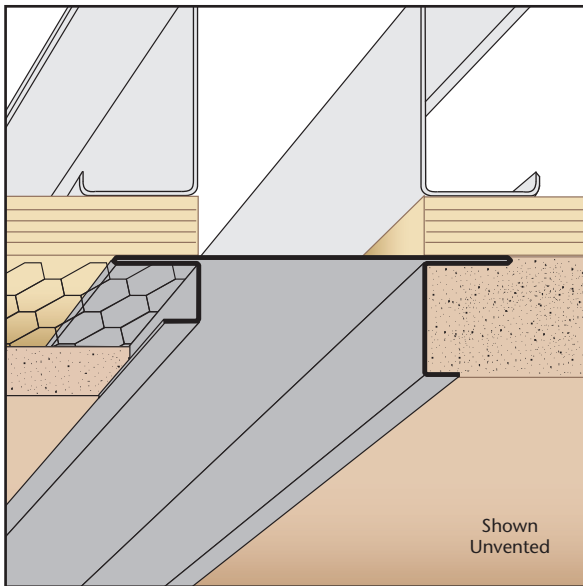
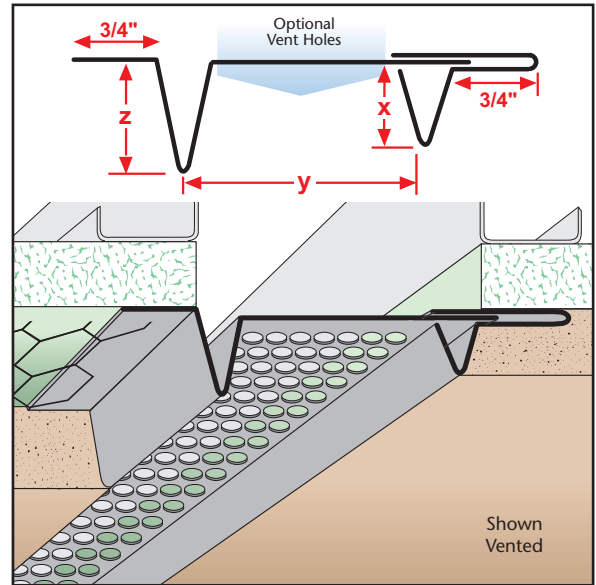
OES: Offset Expansion Screed - 2 pc.

- Available With 1/8", 1/4" Vent Holes or No Holes
- Available in Copper, Galvanized Steel, Zinc, Stainless Steel or Aluminum

Adjustable version of our Offset Reveal Screed that permits movement in a double stud condition and at floor lines. Available vented for air flow.

Note: Aluminum is not available with 1/8" vent holes.

Length	X Size	Y Size	Z Size
10'	3/8"	3/4"	1/2"
	1/2"	1"	3/4"
	3/4"	1 1/2"	7/8"
	7/8"	2"	1"
	1"	2 1/2"	1 1/4"
	1 3/8"	3"	1 1/2"
		3 1/2"	1 3/4"
		4"	2"
		4 1/2"	
		5"	
		5 1/2"	
		6"	



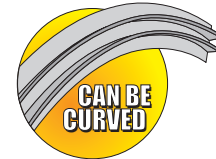
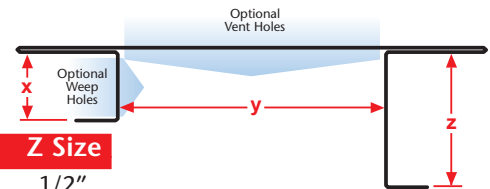
OPC: Offset Plaster Channel Screed

- Available With 1/8", 1/4" Vent Holes or No Holes
- Available in Copper, Galvanized Steel, Zinc, Stainless Steel or Aluminum

A channel screed style reveal molding with return keys for screeding. Provides a longer leg on one side for dissimilar depths of materials, such as EIFS. Available with 1/8" weep holes.

Note: Aluminum is not available with 1/8" vent holes.

Length	X Size	Y Size	Z Size
10'	3/8"	3/4"	1/2"
	1/2"	1"	3/4"
	5/8"	1 1/2"	7/8"
	3/4"	2"	1"
	7/8"	2 1/2"	1 1/4"
	1"	3"	1 1/2"
	1 3/8"	1 3/4"	2"



OVS: Offset Vent/Reveal Screed

- Available With 1/8", 1/4" Vent Holes or No Holes
- Available in Copper, Galvanized Steel, Zinc, Stainless Steel or Aluminum

A variation of our standard vent screed which provides a larger depth on one side to accommodate materials of dissimilar depths.

Note: Aluminum is not available with 1/8" vent holes.

Length	X Size	Y Size	Z Size
10'	3/8"	3/4"	1/2"
	1/2"	1"	3/4"
	3/4"	1 1/2"	7/8"
	7/8"	2"	1"
	1 3/8"	2 1/2"	1 3/8"
		3"	
		3 1/2"	
		4"	
		4 1/2"	
		5"	
		5 1/2"	
		6"	

