

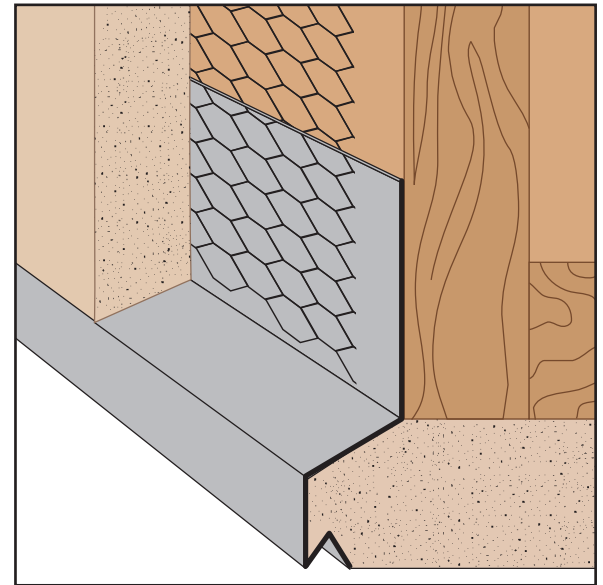
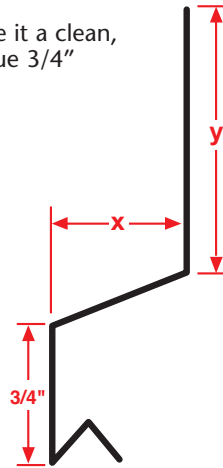
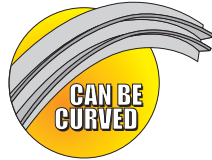


## NTD: #2 Drip

- No Weep Holes
- Available in Copper, Galvanized Steel, Zinc, Stainless Steel or Aluminum

A plaster drip screed that helps align the soffit to give it a clean, straight edge at the fascia/soffit line. Provides a unique 3/4" "flush" reveal at the fascia.

**Note:** Factory curving this item is limited. Please consult the factory for information.

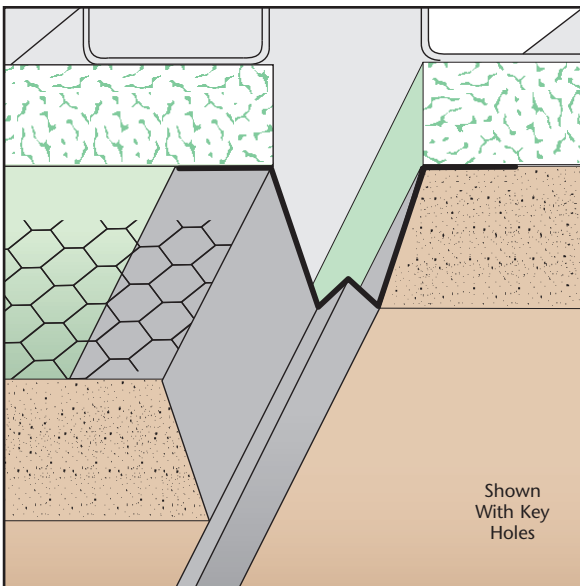


Length	X Size	Y Size
10'	7/8"	1 3/4"
	1 3/8"	3 1/2"

## NVS: Narrow "V" Screed

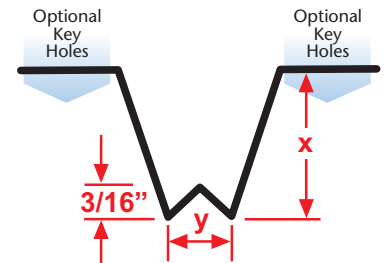
- Available With Key Holes or No Holes
- Available in Copper, Galvanized Steel, Zinc, Stainless Steel or Aluminum

A screed for special applications, key holes are available and should be specified when terminating plaster against concrete or other materials.



Shown With Key Holes

Length	X Size	Y Size
10'	1/2"	1/4"
	5/8"	3/8"
	3/4"	
	7/8"	
	1 3/8"	



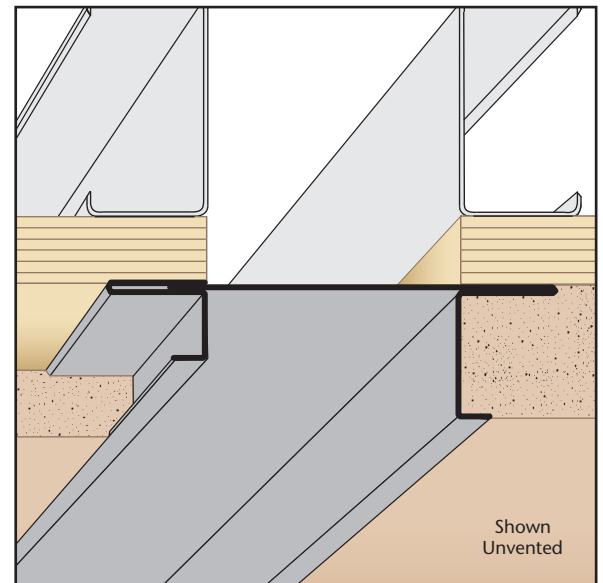
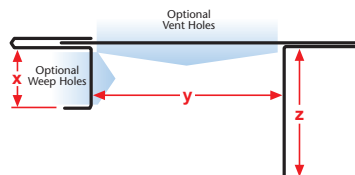
## OEC: Offset Expansion Channel Screed

- Available With 1/8", 1/4" Vent Holes or No Holes
- Available in Copper, Galvanized Steel, Zinc, Stainless Steel or Aluminum

Adjustable version of our Offset Plaster Channel Screed that permits movement in a double stud condition or at a floor line.

**Note:** Aluminum is not available with 1/8" vent holes.

Length	X Size	Y Size	Z Size
10'	3/8"	3/4"	1/2"
	1/2"	1"	3/4"
	3/4"	1 1/2"	7/8"
	7/8"	2"	1"
	1"	2 1/2"	1 1/4"
	1 3/8"	3"	1 3/8"
			1 3/4"
			2"



Shown Unvented