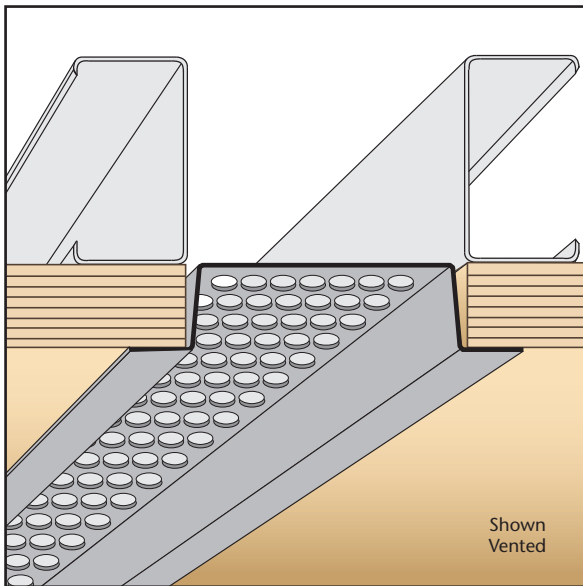
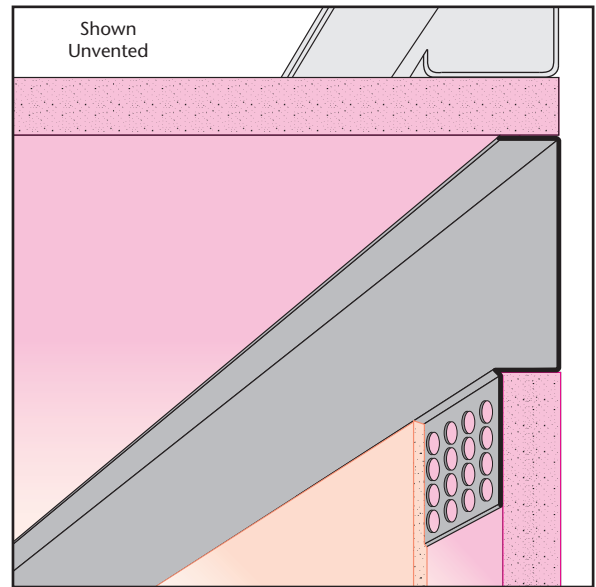
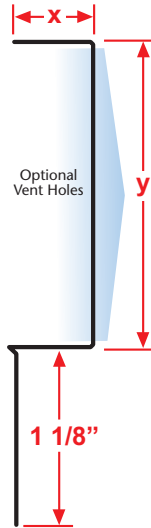
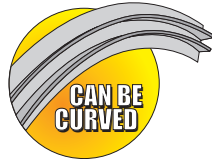


FDR: F Drywall Reveal

- Available With 1/8", 1/4" Vent Holes or No Vent
- Available in Copper, Galvanized Steel, Zinc, Stainless Steel or Aluminum

Drywall reveal molding used at ceiling/wall, wall/ceiling, or base conditions. Can be vented to provide perimeter air flow. Tapes in after drywall is installed. Includes key holes for proper plaster adhesion.

Length	X Size	Y Size
10'	1/2"	1/2"
	5/8"	3/4"
		1"
		1 1/2"
		2"
		2 1/2"
		3"
		3 1/2"
		4"



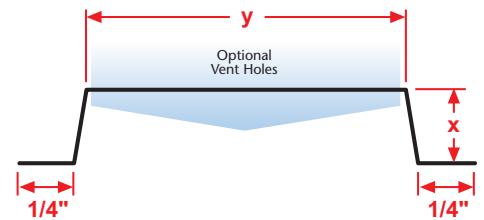
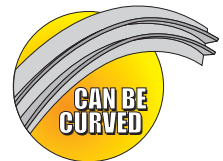
FEV: Flush Edge Vent

- Available With 1/8", 1/4" Vent Holes or No Vent
- Available in Copper, Galvanized Steel, Zinc, Stainless Steel or Aluminum

Used in a soffit condition as a vent molding to permit air flow into the soffit

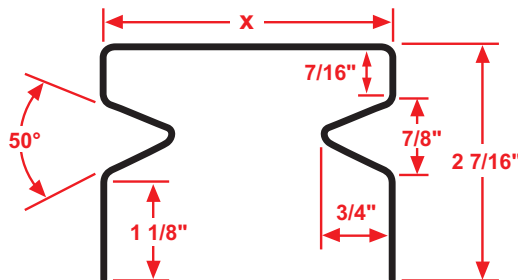
Note: Aluminum is not available with 1/8" vent holes..

Length	X Size	Y Size
10'	3/8"	1 1/2"
	1/2"	2"
	5/8"	3"
	3/4"	4"
	7/8"	
	1"	
	1 1/4"	
	1 1/2"	



FLT: Flexible Trak

- 26 Gauge or 20 Gauge Galvanized Steel Only
- Flexible Trak is designed for non-load bearing and partition walls to reduce cracking caused by ceiling deflection.



Length	X Size
10'	3 5/8"
	4"
	6"

