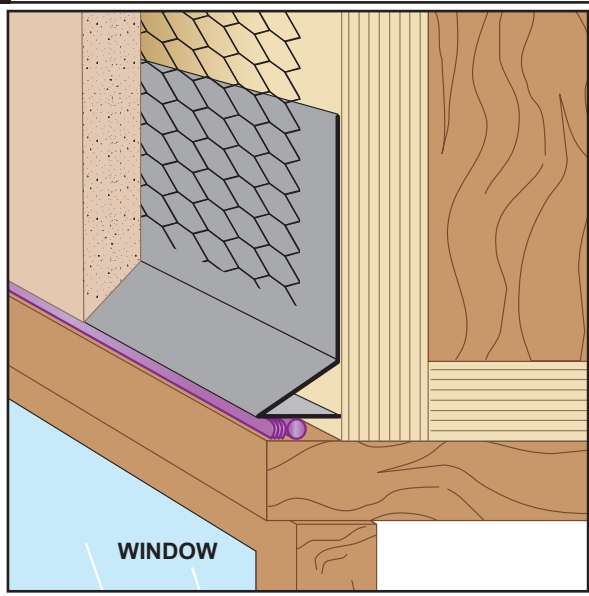
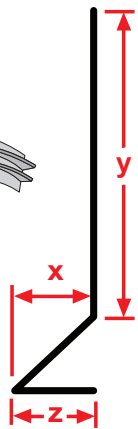
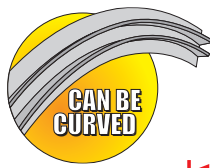




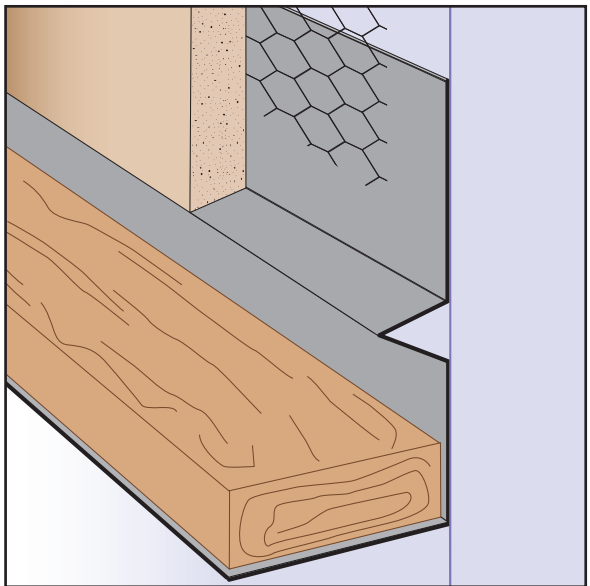
DHF: Drip Head Flashing (#6)

- Superior™ Moisture Protection
- Available in Copper, Galvanized Steel, Zinc, Stainless Steel or Aluminum

An angled window and door head plaster stop and flashing piece. Custom "Z" dimension is available. Matching factory miter-cut, solid-soldered inside and outside corners are available, giving you moisture management confidence throughout the entire installation.



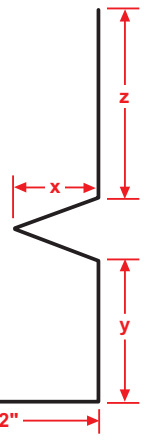
Length	X Size	Y Size	Z Size
10'	1/2"	3 1/2"	1/2"
	3/4"	5"	3/4"
	7/8"		7/8"
	1"		1"
	1 3/8"	1 3/8"	



DKD: Deck Diato

- Superior™ Moisture Protection
- Available in Copper, Galvanized Steel, Zinc, Stainless Steel or Aluminum

Deck Diato combines a plaster stop for conventional 3-coat stucco and pan flashing at a wall/deck condition where a plaster stop and flashing are required. Matching factory miter-cut, solid-soldered inside and outside corners are available, giving you moisture management confidence throughout the entire installation.

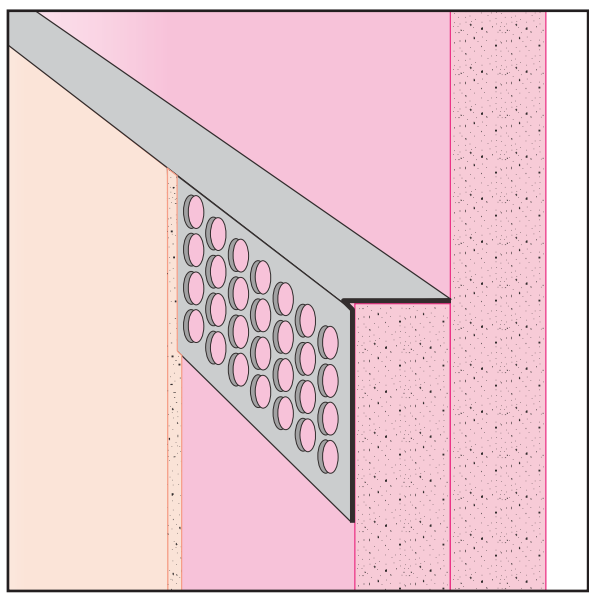
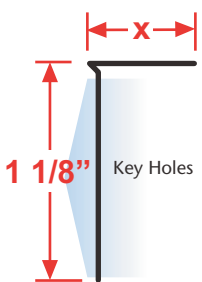
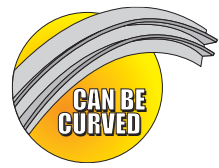


Length	X Size	Y Size	Z Size
10'	3/4"	3/4"	2"
	7/8"	1 1/2"	3"
	1 3/8"	2"	4"
		2 1/2"	
		3"	

DTE: Drywall Termination Edge

- Available in Copper, Galvanized Steel, Zinc, Stainless Steel or Aluminum

Creates a protective and decorative edge for drywall at any termination point. Includes key holes for proper plaster adhesion.



Length	X Size	Y Size
10'	1/2"	1 1/8"
	5/8"	