



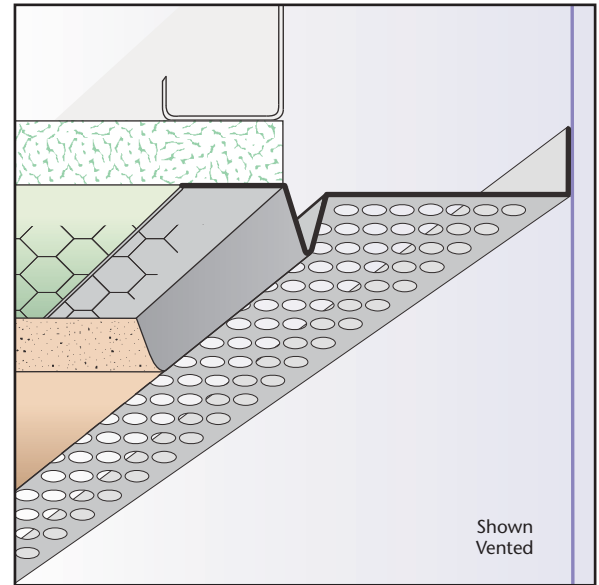
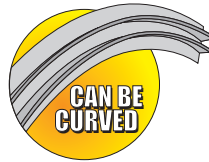
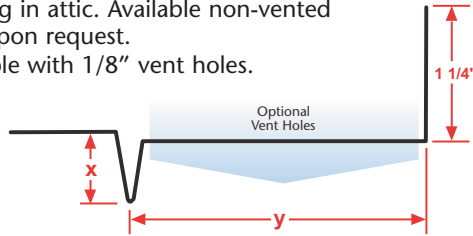
## AWF: Attic Wing Fascia (J-2)

- Available With 1/8", 1/4" Vent Holes or No Vent
- Available in Copper, Galvanized Steel, Zinc, Stainless Steel or Aluminum

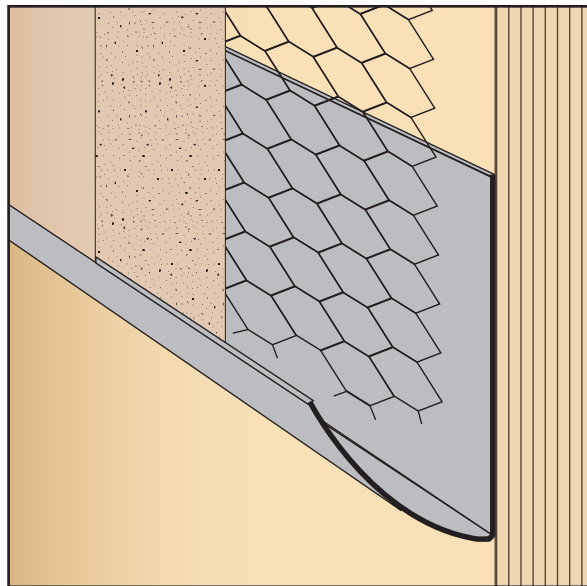
Provides a ventilated finish at the juncture of soffit and fascia providing attachment by a wing in attic. Available non-vented for use as a decorative reveal upon request.

**Note:** Aluminum is not available with 1/8" vent holes.

Length	X Size	Y Size
10'	3/8"	3/4"
	1/2"	1"
	5/8"	1 1/2"
	3/4"	2"
	7/8"	2 1/2"
	1"	3"
		3 1/2"
		4"
		4 1/2"
		5"



Shown Vented

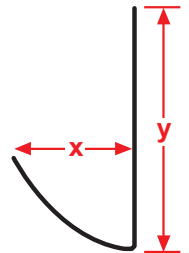


## BNB: Bullnose Bead

- Available in Copper, Galvanized Steel, Zinc, Stainless Steel or Aluminum

A plaster stop/casing bead in a bullnose shape that provides a decorative casing around windows and doors.

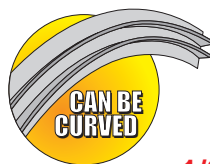
Length	X Size	Y Size
10'	3/4"	1 1/2"
	7/8"	



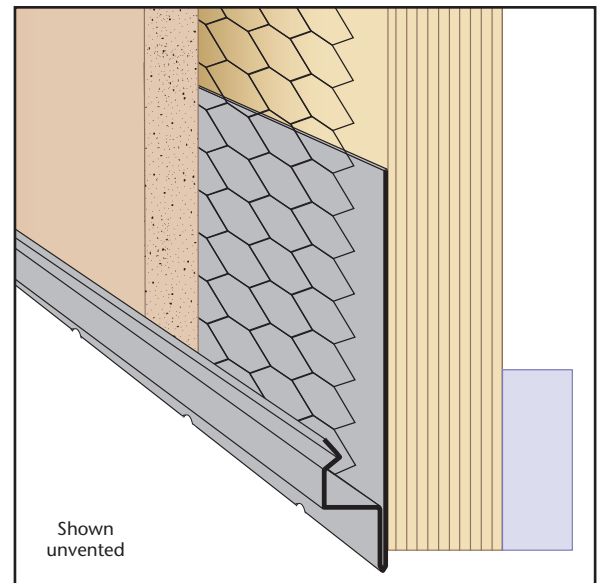
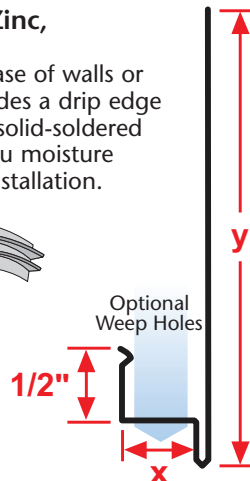
## BSS: Blind Stop

- Superior™ Moisture Protection
- Available With 1/8" Weep Holes
- Available in Copper, Galvanized Steel, Zinc, Stainless Steel or Aluminum

A plaster stop that terminates the stucco at the base of walls or at the fascia, or fascia/soffit conditions. Also provides a drip edge and has weep holes. Matching factory miter-cut, solid-soldered inside and outside corners are available, giving you moisture management confidence throughout the entire installation.



Length	X Size	Y Size
10'	1/2"	2 3/4"
	3/4"	3 1/2"
	7/8"	
	1"	



Shown unvented