

KEY

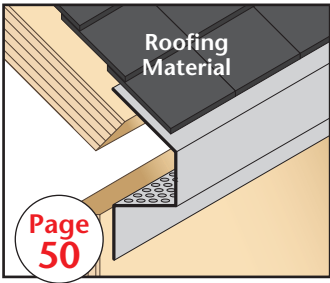
PLASTER/
STUCCO

CONCRETE

PLYWOOD

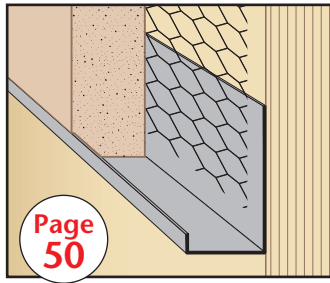
WOOD

FOAM



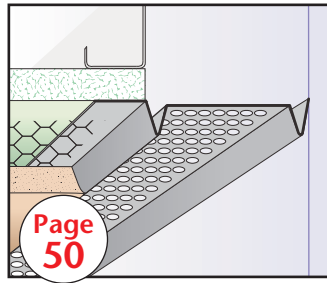
Page 50

SEV:
Soffit Eave Vent



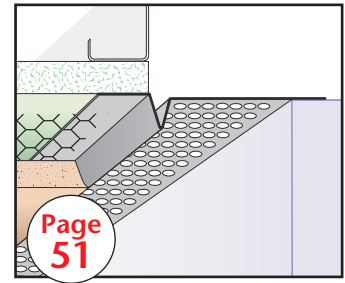
Page 50

SFC:
Short Flange Casing



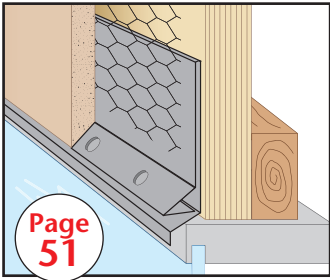
Page 50

SFS:
Single Flange Screed



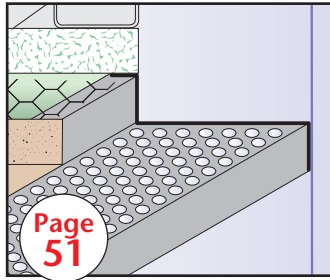
Page 51

SPS:
Single Point Screed



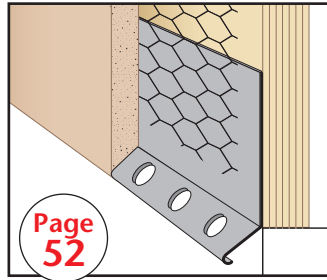
Page 51

SF#3:
Stucco Screed Flashing (#3)



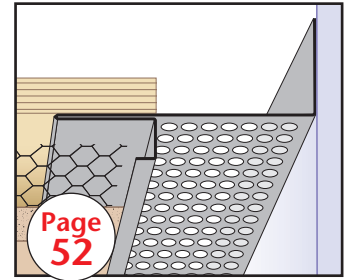
Page 51

SSM:
Step Separation Mold



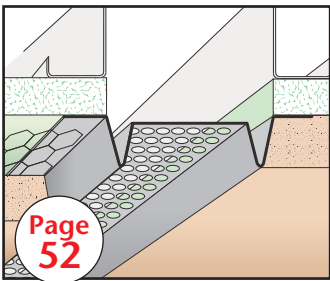
Page 52

SST:
Stucco Stop (#36)



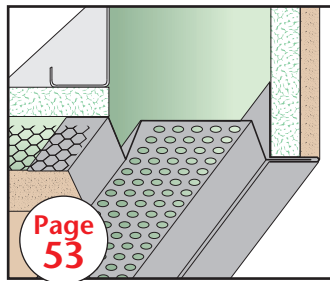
Page 52

STM:
Soffit Transition Mold



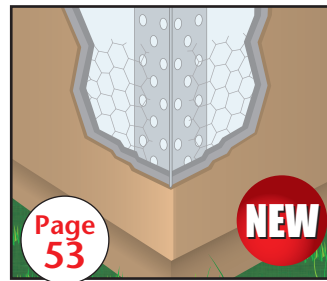
Page 52

SVR:
Soffit Vent/Reveal Screed



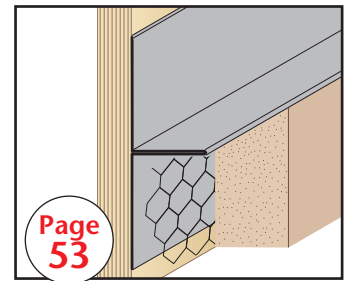
Page 53

TPC:
Two Piece Corner



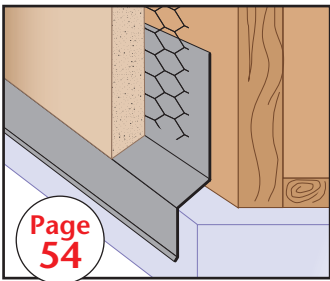
Page 53

TRC:
Tru-Corner™



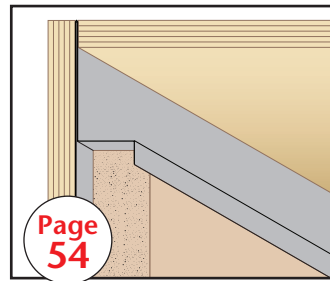
Page 53

TRM:
T-Reveal Mold



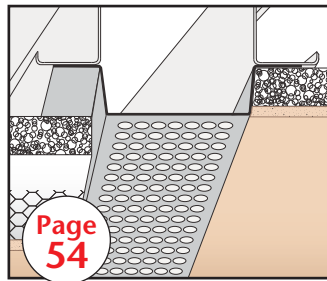
Page 54

TSF:
Transition Step Flashing



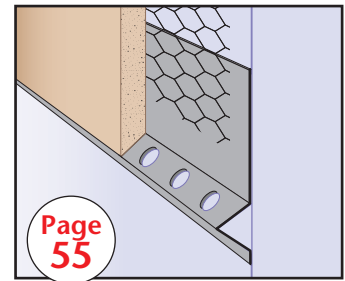
Page 54

TWM:
T Water-Resistant Molding



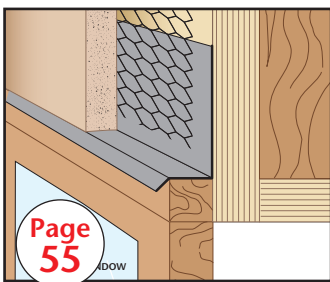
Page 54

FEV:
Flush Edge Vent



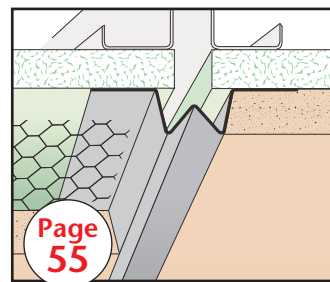
Page 55

W-S:
Weep Screed (#7)



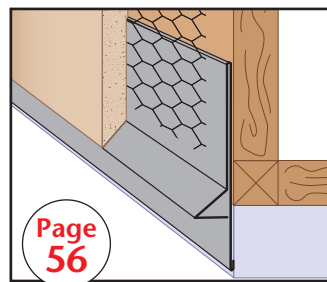
Page 55

WTP:
Window Termination Point



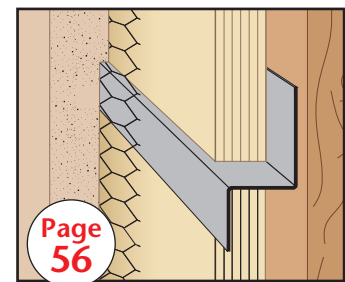
Page 55

WVS:
Wide V Screed



Page 56

XLF:
XL Foundation Screed



Page 56

Z-T:
Z-Trim