

KEY

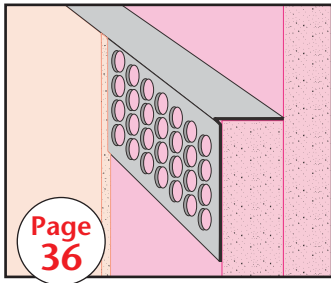
PLASTER/
STUCCO

CONCRETE

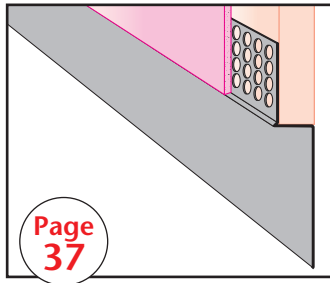
PLYWOOD

WOOD

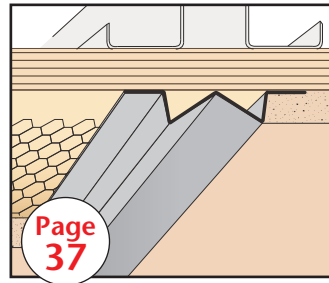
FOAM



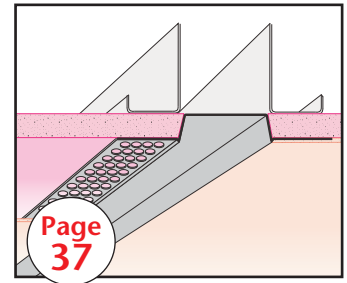
Page 36



Page 37



Page 37



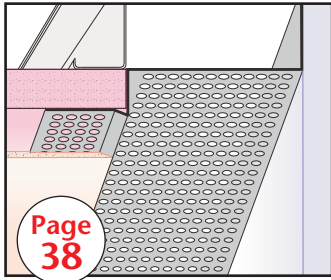
Page 37

DTE:
Drywall Termination Edge

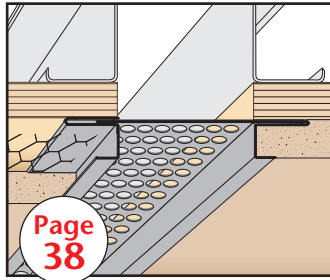
DTR:
Drywall Termination Reveal

DVG:
Double V Groove

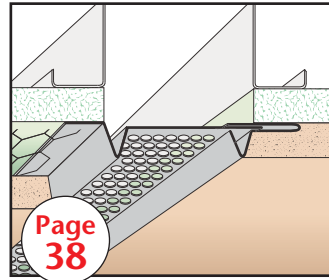
DWR:
Drywall Reveal



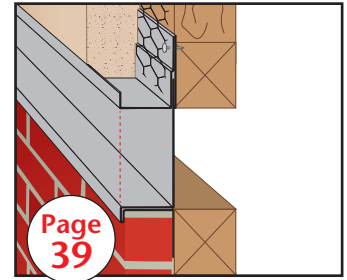
Page 38



Page 38



Page 38



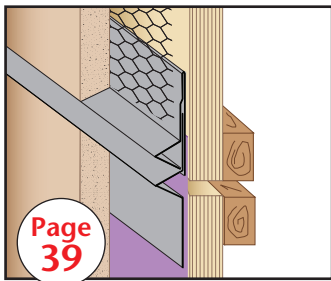
Page 39

DWT:
Drywall Wall Trim

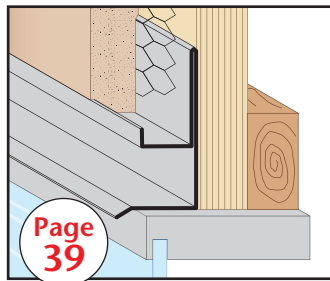
ECS: Expansion Channel
Screed (#40) - 2 pc.

EVS: Expansion Vent
Screed - 2 pc.

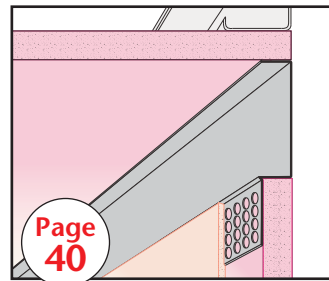
EWC: Expansion Water-
Resistant Channel - 2 pc.



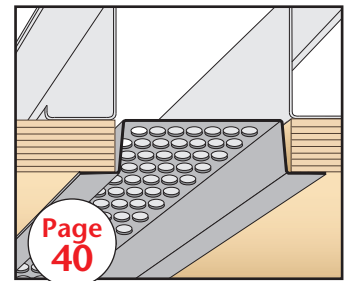
Page 39



Page 39



Page 40



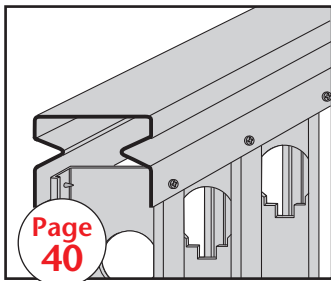
Page 40

EWR: Expansion Water-
Resistant Reveal - 2 pc.

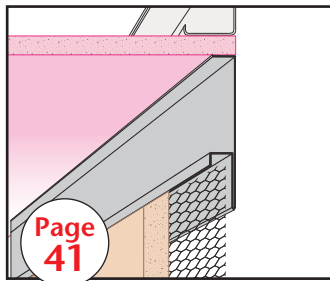
FDM:
F-Drip Mold

FDR:
F Drywall Reveal

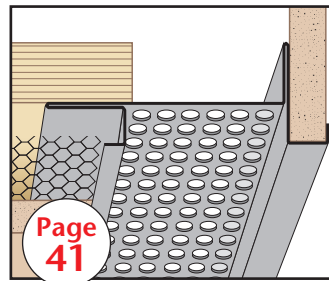
VHC:
Vented Hat Channel



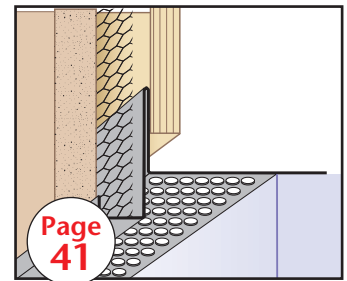
Page 40



Page 41



Page 41



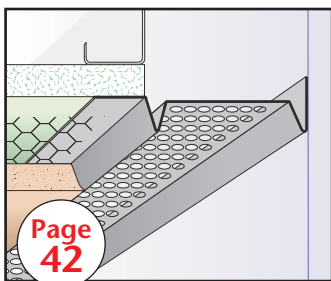
Page 41

FLT:
Flexible Trak

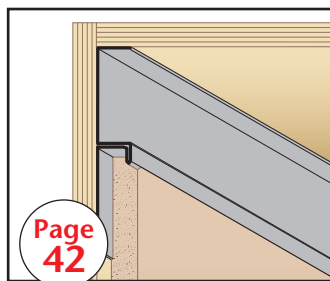
FRM:
F Reveal Mold

FSM:
Fascia Soffit Mold

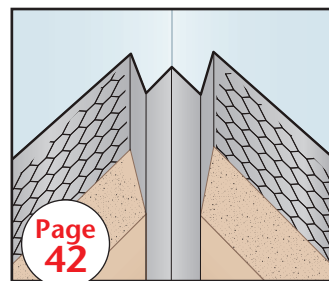
FTM:
Fascia Transition Mold



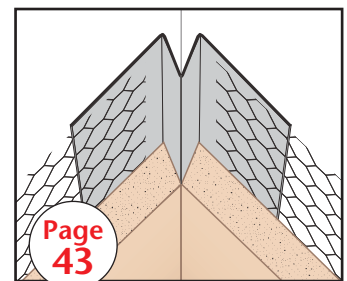
Page 42



Page 42



Page 42



Page 43

FVM:
F Vent Mold

FWC:
F Water-Resistant Channel

ICR:
Inside Corner Reveal

ICT:
Inside Corner Trim