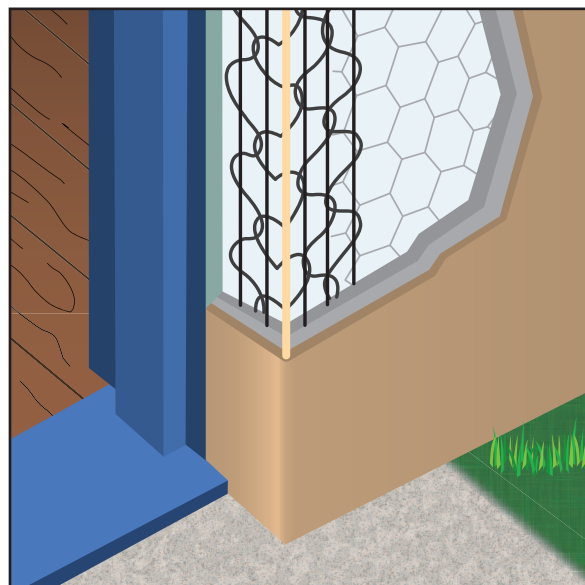


PNSF: Plastic Nose Short Flange

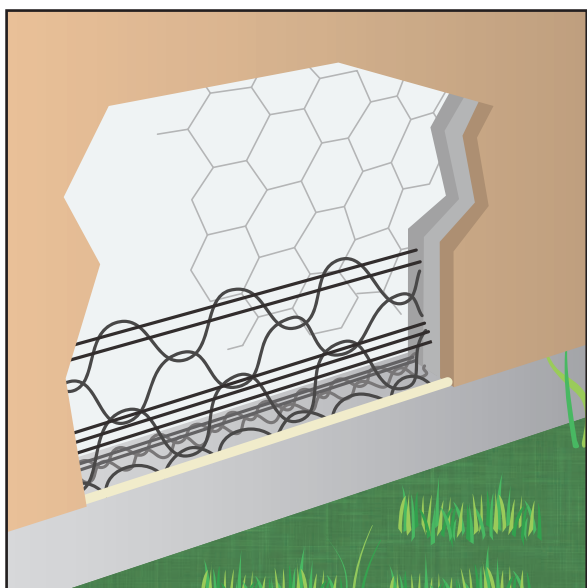
This is the standard short flange with a high impact, non-rusting plastic nose and is excellent for heavy rain, high humidity and salt air climates. It is also useful to the fireproofing industry for boxed and contoured "I" beams.

Shaped for exterior corners on doors, windows and panel systems where a short flange or stop is needed. It offers one standard 2 1/2" leg and one short 1 1/2" leg. Available in stainless steel to be used with absolute confidence in harsh environments. Recommended for use with acrylic finishes.

Galvanized: 10PNSF
Stainless Steel: 10SSPNSF



Length	Feet Per Carton
10 Ft.	300 Ft./Ctn.



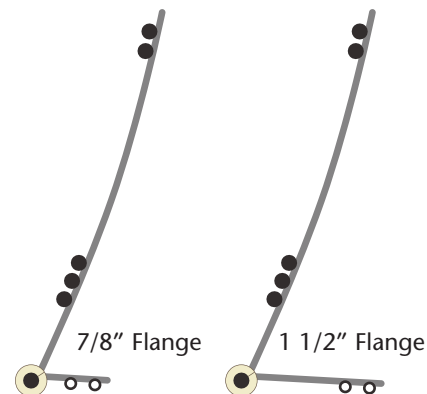
PNWA: Plastic Nose WeepAid®

- Available In 7/8" and 1 1/2" Flange

Designed to act as a foundation screed for conventional 3-coat 7/8" stucco, WeepAid® maximizes the weep area and reduces the opportunity for stucco to stain or crack. Easy to tailor and trim. Comes with a non-rust high impact PVC nose. Can be used to form pop-outs around windows and doors as well as other "Ginger-Bread" details. Recommended for use with acrylic finishes.

Galvanized: 10PNWA78 (7/8"), 10PNWA112 (1 1/2")
Stainless Steel: 10SSPNWA78 (7/8"), 10SSPNWA112 (1 1/2")

Length	Feet Per Carton
10 Ft.	250 Ft./Ctn.



SA: StockAid®

A lower cost alternative to the original CornerAid® with fewer reinforcing wires. Three nose wire design used for exterior corner reinforcing with conventional 3-coat 7/8" stucco. Available in stainless steel to be used with absolute confidence in high humidity and salt air environments.

Galvanized: 10SA
Stainless Steel: 10SSSA



Length	Feet Per Carton
10 Ft.	400 Ft./Ctn.

