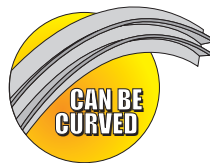
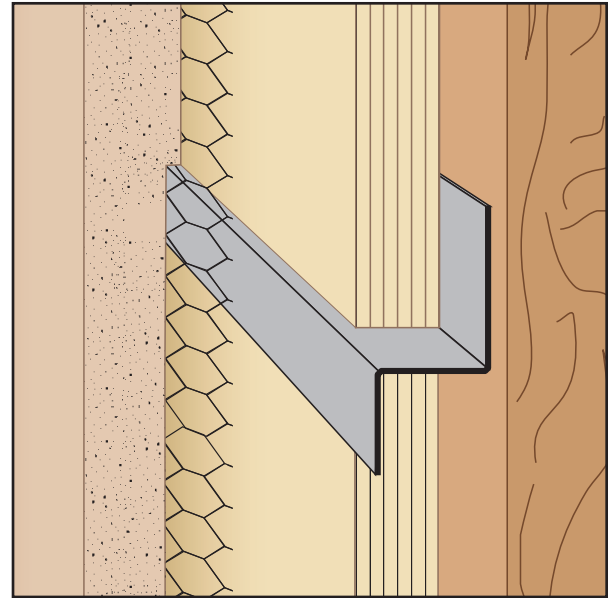


Z-T: Z-Trim

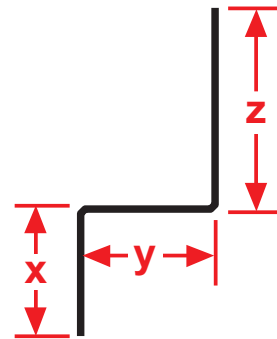
- Available in Copper, Galvanized Steel, Zinc, Stainless Steel or Aluminum

Used to properly seal and join two pieces of plywood and other conditions where a "Z" shape is required



| KEY | |
|-----|--------------------|
| | PLASTER/STUCCO |
| | CONCRETE |
| | PLYWOOD |
| | WOOD |
| | FOAM |
| | WATERPROOF BARRIER |
| | WALL SHEATHING |
| | DRYWALL |
| | DRYWALL MUD |
| | FIBER CEMENT |

| Length | X Size | Y Size | Z Size |
|--------|--------|--------|--------|
| 10' | 1/2" | 1/2" | 3/4" |
| | 1" | 5/8" | 1" |
| | 1 1/2" | 3/4" | 1 1/2" |
| | 2" | 1" | 2" |
| | | 1 1/2" | |



Materials:

- Copper (24ga. - 0.0216" - 16oz)
- Galvanized Steel (26ga. - 0.0217" - G60*)
- Zinc (24ga. - 0.0200" - #190)
- Stainless Steel (26ga. - 0.0187" - SAE 304)
 - #2B (Dull Finish)
 - #4 (Brushed Finish)
 - #8 (Mirror Finish)
- Aluminum (22ga. - 0.0253" - 5052 H32)

Note: Standard length is 10 feet.
 Additional lengths available upon request.

Note: *G90 available upon request

ASTM Codes:

- A580M (Stainless Steel)
- A653/A653M (Galvanized Coating)
- A924 (Galvanized Coating)
- B152/B152M (Copper)
- B209 (Aluminum Sheet)
- B69 (Zinc)
- C1047 (Drywall)
- C1063 (Accessories)
- C841 (Interior Furring and Lathing)

