



PRODUCTS™

1-87-STOCKTON

FAX: (702) 651-0948

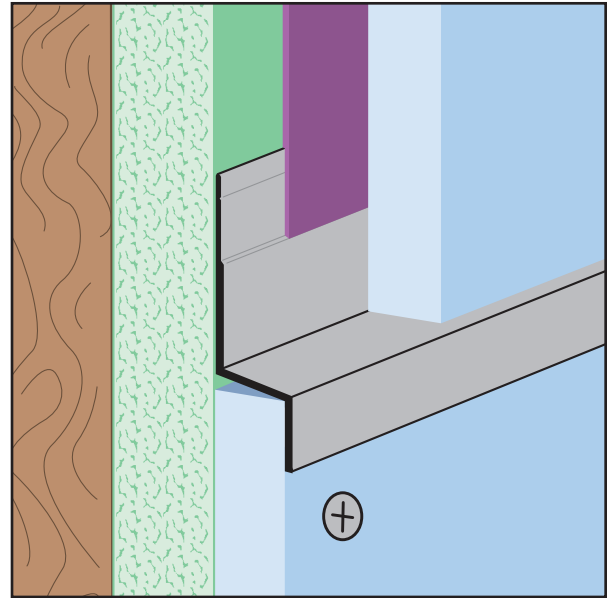
office@stocktonproducts.com

FaceBook.com/stocktonproducts

www.StocktonProducts.com

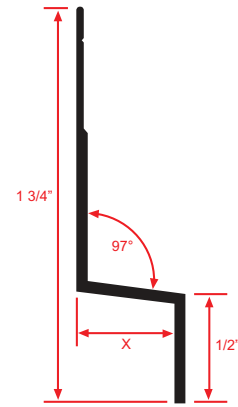
WS-FCB: Weep Screed for Fiber Cement

- **Now Available Primed**
A decorative reveal that creates a weep point that allows moisture to weep out and away from the fiber cement panels.



KEY	
	PLASTER/STUCCO
	CONCRETE
	PLYWOOD
	WOOD
	FOAM
	WATERPROOF BARRIER
	WALL SHEATHING
	DRYWALL
	DRYWALL MUD
	FIBER CEMENT

Length	X Size
10'	1/2"



Materials:

- Aluminum Alloy (6063 T-5)

Note: Standard length is 10 feet. Additional lengths available upon request.

ASTM Codes:

- B136 (Anodize Coating)
- B244 (Anodize Coating)
- C1063 (Accessories)
- D4214 (Paint Films)

