

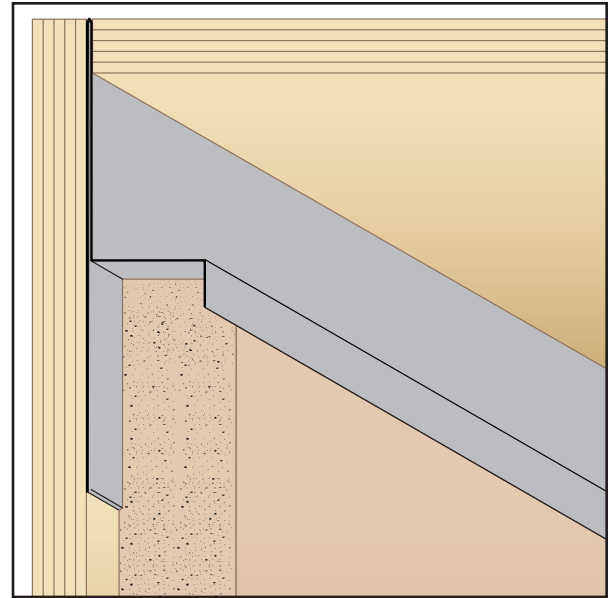


**1-87-STOCKTON**  
 FAX: (702) 651-0948  
 office@stocktonproducts.com  
 FaceBook.com/stocktonproducts  
 www.StocktonProducts.com

# TWM: T Water-Resistant Molding

- Superior Moisture Protection™
- SolidGround® Design For Moisture Protection
- Available in Copper, Galvanized Steel, Zinc, Stainless Steel or Aluminum

One-piece SolidGround® design feature mitigates the concern of moisture penetration in a horizontal condition. Provides a plaster stop for top of wall/parapet conditions. SolidGround® design prevents moisture penetration at the top of the wall.



**KEY**

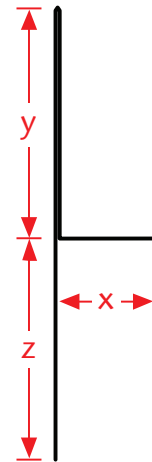
- PLASTER/STUCCO
- CONCRETE
- PLYWOOD
- WOOD
- FOAM
- WATERPROOF BARRIER
- WALL SHEATHING
- DRYWALL
- DRYWALL MUD
- FIBER CEMENT

Length	X Size	Y Size	Z Size
10'	1/2"	3/4"	1 3/4"
	3/4"	1"	1"
	7/8"	1 1/2"	1 1/2"
	1"	2"	2"
	1 1/4"	2 1/2"	2 1/2"
	1 3/8"	3"	3"
	1 1/2"		

**Materials:**

- Copper (24ga. - 0.0216" - 16oz)
- Galvanized Steel (26ga. - 0.0217" - G90)
- Zinc (24ga. - 0.0200" - #190)
- Stainless Steel (26ga. - 0.0187" - SAE 304)
  - #2B (Dull Finish)
  - #4 (Brushed Finish)
  - #8 (Mirror Finish)
- Aluminum (22ga. - 0.0253" - 5052 H32)

**Note:** Standard length is 10 feet. Additional lengths available upon request.



**ASTM Codes:**

- A580M (Stainless Steel)
- A653/A653M (Galvanized Coating)
- A924 (Galvanized Coating)
- B152/B152M (Copper)
- B209 (Aluminum Sheet)
- B69 (Zinc)
- C1047 (Drywall)
- C1063 (Accessories)
- C841 (Interior Furring and Lathing)

