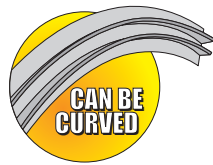
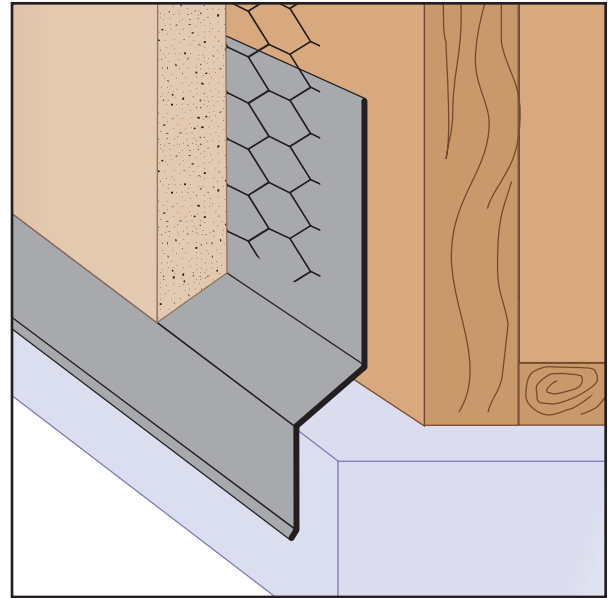


# TSF: Transition Step Flashing

- Available in Copper, Galvanized Steel, Zinc, Stainless Steel or Aluminum

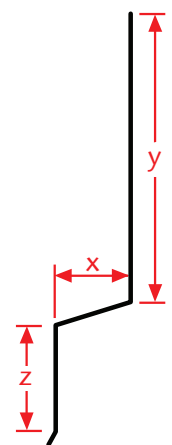
A step flashing that provides a drip edge for top of windows and door conditions or where special flashing conditions are present.



**KEY**

	PLASTER/STUCCO
	CONCRETE
	PLYWOOD
	WOOD
	FOAM
	WATERPROOF BARRIER
	WALL SHEATHING
	DRYWALL
	DRYWALL MUD
	FIBER CEMENT

Length	X Size	Y Size	Z Size
10'	1/2"	3 1/2"	1/2"
	3/4"	5"	3/4"
	7/8"		1"
	1"		
	1 3/8"		



**Materials:**

- Copper (24ga. - 0.0216" - 16oz)
- Galvanized Steel (26ga. - 0.0217" - G90)
- Zinc (24ga. - 0.0200" - #190)
- Stainless Steel (26ga. - 0.0187" - SAE 304)
  - #2B (Dull Finish)
  - #4 (Brushed Finish)
  - #8 (Mirror Finish)
- Aluminum (22ga. - 0.0253" - 5052 H32)

**ASTM Codes:**

- A580M (Stainless Steel)
- A653/A653M (Galvanized Coating)
- A924 (Galvanized Coating)
- B152/B152M (Copper)
- B209 (Aluminum Sheet)
- B69 (Zinc)
- C1047 (Drywall)
- C1063 (Accessories)
- C841 (Interior Furring and Lathing)

**Note:** Standard length is 10 feet. Additional lengths available upon request.

