



PRODUCTS™

1-87-STOCKTON

FAX: (702) 651-0948

office@stocktonproducts.com

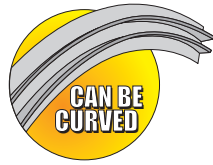
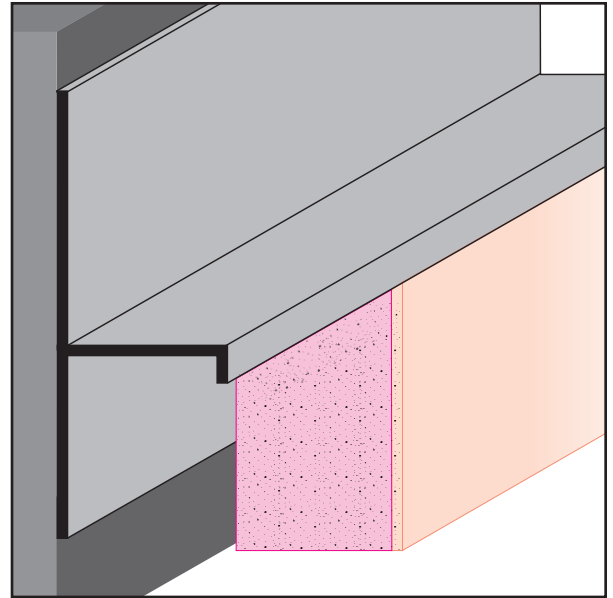
FaceBook.com/stocktonproducts

www.StocktonProducts.com

# TDM: T Drywall Molding

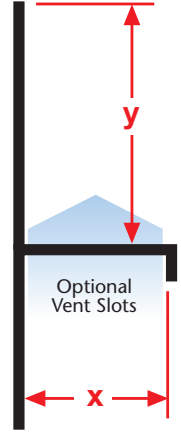
- Available With 1/8" x 1" Vent Slots or No Vents

Provides a reveal and acts as a drywall stop/control screed for drywall at wall base and column base conditions where a reveal and stop are required. Can be used to create a reveal at ceiling/wall conditions.



KEY	
	PLASTER/STUCCO
	CONCRETE
	PLYWOOD
	WOOD
	FOAM
	WATERPROOF BARRIER
	WALL SHEATHING
	DRYWALL
	DRYWALL MUD
	FIBER CEMENT

Length	X Size	Y Size
10'	1/2"	1/2"
	5/8"	3/4"
		1"
		1 1/2"
		2"
		3"
		4"



### Materials:

- Aluminum Alloy (6063 T-5)

**Note:** Standard length is 10 feet. Additional lengths available upon request.

### ASTM Codes:

- B136 (Anodize Coating)
- B244 (Anodize Coating)
- C1063 (Accessories)
- D4214 (Paint Films)
- B221-14 (Aluminum)

