



PRODUCTS™

1-87-STOCKTON

FAX: (702) 651-0948

office@stocktonproducts.com

FaceBook.com/stocktonproducts

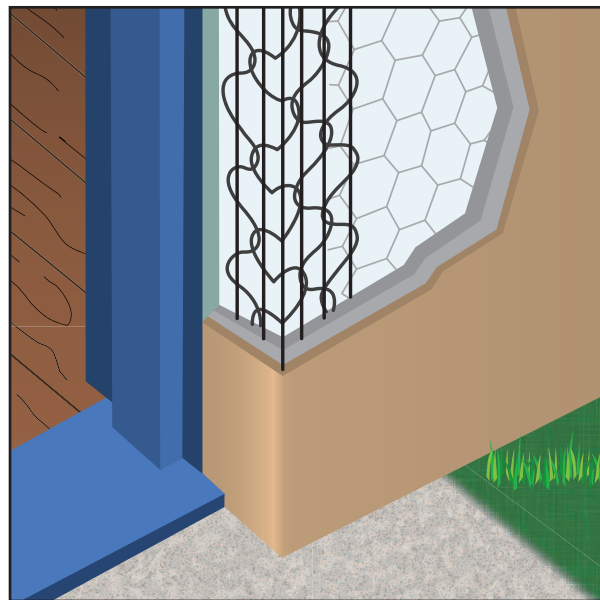
www.StocktonProducts.com

## SF: Short Flange

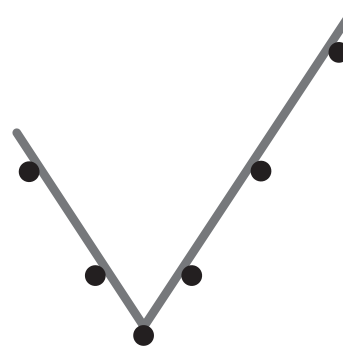
Shaped for exterior or interior corners on doors, windows and panel systems where a short flange or stop is needed. It offers one standard 2 3/8" leg and one short 1 1/2" leg. Available in stainless steel to be used with absolute confidence in high humidity and salt air environments.

**Galvanized:** 10SF

**Stainless Steel:** 10SSSF



Length	Feet Per Carton
10 Ft.	400 Ft./Ctn.



### Materials:

- Galvanized (17.5 Gauge Wire)  
G-60 Coating
- Stainless Steel (17.5 Gauge Wire)  
316L Stainless 18% Chromium

**Note:** Standard length is 10 feet.  
Additional lengths available upon request.

### ASTM Codes:

- A580/A580M (Stainless Steel)
- A641/A641M (Galvanized Wire)
- A653/A653M (Galvanized Coating)
- A924 (Galvanized Steel)
- C1047 (Drywall)
- C1063 (Accessories)
- C1063 (Accessories)
- C841 (Interior Furring & Lathing)

©2016 Stockton Products. All rights reserved worldwide. CornerAid®, WeepAid®, Pozalite®, ArchAid®, StockAid®, EmberStop®, BugStop®, SolidGround®, Tru-Corner® and Superior Moisture Protection™ are all trademarks of Stockton Products™.

