



PRODUCTS™

1-87-STOCKTON

FAX: (702) 651-0948

office@stocktonproducts.com

FaceBook.com/stocktonproducts

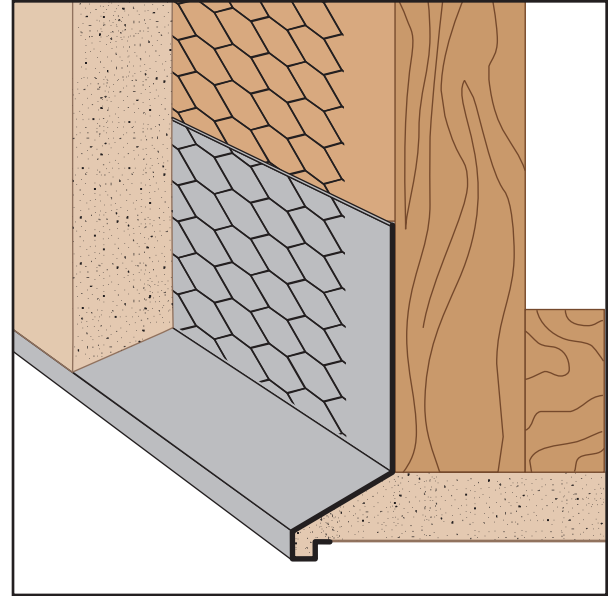
www.StocktonProducts.com

SDC: Soffit Drip Corner (#12)

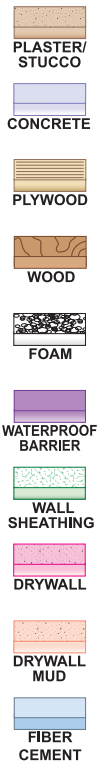
- Superior Moisture Protection™
- No Weep Holes
- Available in Copper, Galvanized Steel, Zinc, Stainless Steel or Aluminum

SDC when used at a soffit or recessed window opening will divert water out through the solid slope leg. Water will then shed off the 1/4" drip edge. The drip edge channel also provides a tie-in point for the lath. Special drip molding for use at fascia/soffit transitions and recessed windows conditions that provides a drop edge and tie in point for the lath. Matching factory miter-cut, solid-soldered inside and outside corners are available, giving you moisture management confidence throughout the entire installation.

Note: Factory curving this item is limited. Please consult the factory for information.



KEY

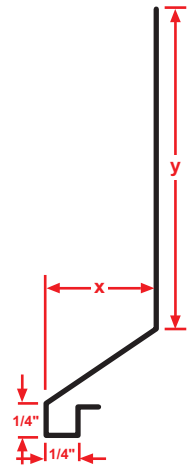
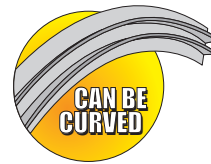


Length	X Size	Y Size
10'	5/8"	2 1/2"
	3/4"	3 1/2"
	7/8"	4"
	1 3/8"	

Materials:

- Copper (24ga. - 0.0216" - 16oz)
- Galvanized Steel (26ga. - 0.0217" - G90)
- Zinc (24ga. - 0.0200" - #190)
- Stainless Steel (26ga. - 0.0187" - SAE 304)
 - #2B (Dull Finish)
 - #4 (Brushed Finish)
 - #8 (Mirror Finish)
- Aluminum (22ga. - 0.0253" - 5052 H32)

Note: Standard length is 10 feet. Additional lengths available upon request.



ASTM Codes:

- A580M (Stainless Steel)
- A653/A653M (Galvanized Coating)
- A924 (Galvanized Coating)
- B152/B152M (Copper)
- B209 (Aluminum Sheet)
- B69 (Zinc)
- C1047 (Drywall)
- C1063 (Accessories)
- C841 (Interior Furring and Lathing)

