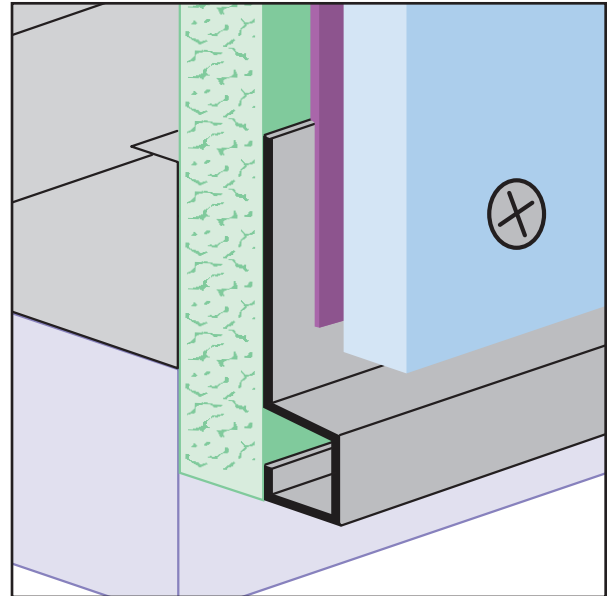




**1-87-STOCKTON**  
 FAX: (702) 651-0948  
 office@stocktonproducts.com  
 FaceBook.com/stocktonproducts  
 www.StocktonProducts.com

# SB-FCB: Starter Base for Fiber Cement Board

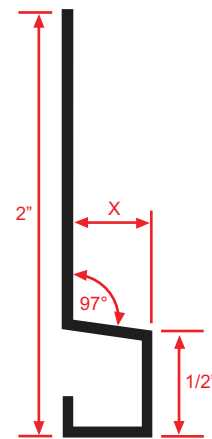
- **Now Available Primed**  
 A functional starter trim piece for the fiber cement panel that also provides a weep point for moisture.



**KEY**

- PLASTER/STUCCO
- CONCRETE
- PLYWOOD
- WOOD
- FOAM
- WATERPROOF BARRIER
- WALL SHEATHING
- DRYWALL
- DRYWALL MUD
- FIBER CEMENT

Length	X Size
10'	3/8"



**Materials:**

- Aluminum Alloy (6063 T-5)

**Note:** Standard length is 10 feet.  
 Additional lengths available upon request.

**ASTM Codes:**

- B136 (Anodize Coating)
- B244 (Anodize Coating)
- C1063 (Accessories)
- D4214 (Paint Films)

