



PRODUCTS™

1-87-STOCKTON

FAX: (702) 651-0948

office@stocktonproducts.com

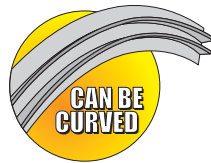
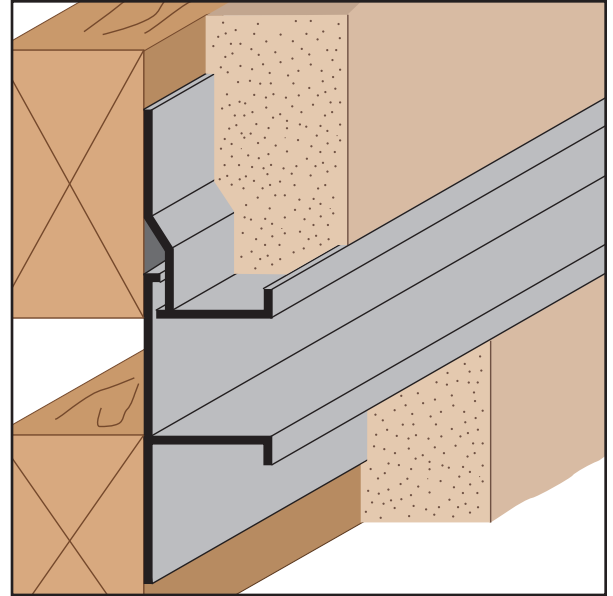
Facebook.com/stocktonproducts

www.StocktonProducts.com

PCS 75-2: Plaster Channel Screed 75-2 Piece

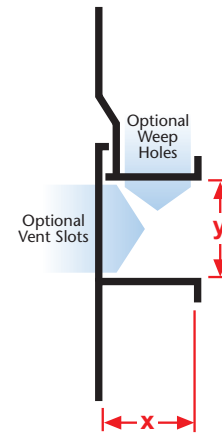
- Available With 1/8" x 1" Vent Slots or No Vents

A two-piece version of the PCS series molding that provides 1/4" +/- movement where a "true" expansion joint is required. In a double stud condition, this molding is typically used in a horizontal condition at floor lines where deflection is an issue. 1/8" weep holes available.



KEY	
	PLASTER/STUCCO
	CONCRETE
	PLYWOOD
	WOOD
	FOAM
	WATERPROOF BARRIER
	WALL SHEATHING
	DRYWALL
	DRYWALL MUD
	FIBER CEMENT

Length	X Size	Y Size
10'	1/2"	1/4"
	3/4"	1/2"
		3/4"
		1"
		2"



Materials:

- Aluminum Alloy (6063 T-5)

Note: Standard length is 10 feet. Additional lengths available upon request.

ASTM Codes:

- B136 (Anodize Coating)
- B244 (Anodize Coating)
- C1063 (Accessories)
- D4214 (Paint Films)
- B221-14 (Aluminum)

