



PRODUCTS™

1-87-STOCKTON

FAX: (702) 651-0948

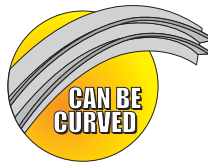
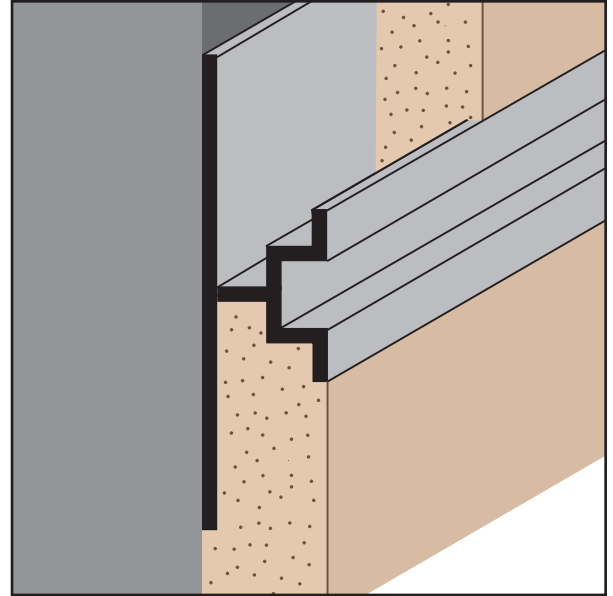
office@stocktonproducts.com

FaceBook.com/stocktonproducts

www.StocktonProducts.com

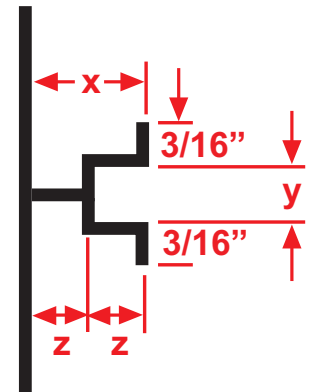
PCS 50-25/25: Plaster Channel Screed 50-25/25

Plaster channel screed with minimal reveal width and ground depth for conditions that require a control joint with a small reveal for 1/2" of stucco over block.



KEY	
	PLASTER/STUCCO
	CONCRETE
	PLYWOOD
	WOOD
	FOAM
	WATERPROOF BARRIER
	WALL SHEATHING
	DRYWALL
	DRYWALL MUD
	FIBER CEMENT

Length	X Size	Y Size	Z Size
10'	1/2"	1/4"	1/4"



Materials:

- Aluminum Alloy (6063 T-5)

Note: Standard length is 10 feet. Additional lengths available upon request.

ASTM Codes:

- B136 (Anodize Coating)
- B244 (Anodize Coating)
- C1063 (Accessories)
- D4214 (Paint Films)
- B221-14 (Aluminum)

