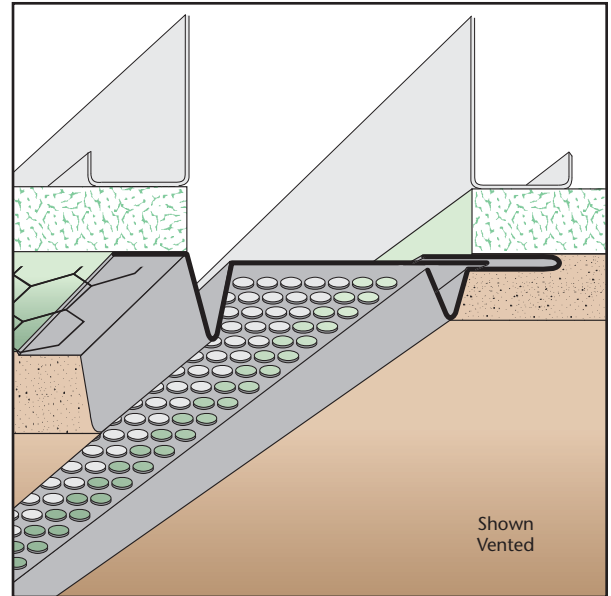


OES: Offset Expansion Screed - 2 pc.

- Available With 1/8", 1/4" Vent Holes or No Holes
- Available in Copper, Galvanized Steel, Zinc, Stainless Steel or Aluminum

Adjustable version of our Offset Reveal Screed that permits movement in a double stud condition and at floor lines. Available vented for air flow.

Note: Aluminum is not available with 1/8" vent holes.



KEY

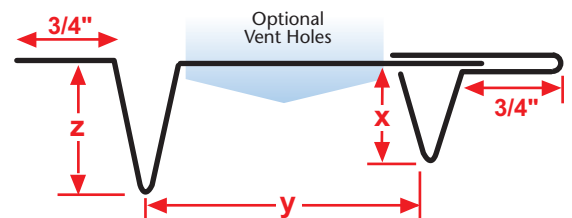
- PLASTER/STUCCO
- CONCRETE
- PLYWOOD
- WOOD
- FOAM
- WATERPROOF BARRIER
- WALL SHEATHING
- DRYWALL
- DRYWALL MUD
- FIBER CEMENT

Length	X Size	Y Size	Z Size
10'	3/8"	3/4"	1/2"
	1/2"	1"	3/4"
	3/4"	1 1/2"	7/8"
	7/8"	2"	1"
	1"	2 1/2"	1 1/4"
	1 3/8"	3"	1 1/2"
		3 1/2"	1 3/4"
		4"	2"
		4 1/2"	
		5"	
	5 1/2"		
	6"		

Materials:

- Copper (24ga. - 0.0216" - 16oz)
- Galvanized Steel (26ga. - 0.0217" - G90)
- Zinc (24ga. - 0.0200" - #190)
- Stainless Steel (26ga. - 0.0187" - SAE 304)
 - #2B (Dull Finish)
 - #4 (Brushed Finish)
 - #8 (Mirror Finish)
- Aluminum (22ga. - 0.0253" - 5052 H32)

Note: Standard length is 10 feet. Additional lengths available upon request.



ASTM Codes:

- A580M (Stainless Steel)
- A653/A653M (Galvanized Coating)
- A924 (Galvanized Coating)
- B152/B152M (Copper)
- B209 (Aluminum Sheet)
- B69 (Zinc)
- C1047 (Drywall)
- C1063 (Accessories)
- C841 (Interior Furring and Lathing)

