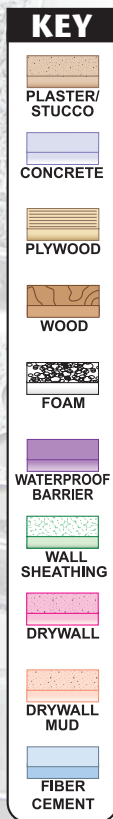
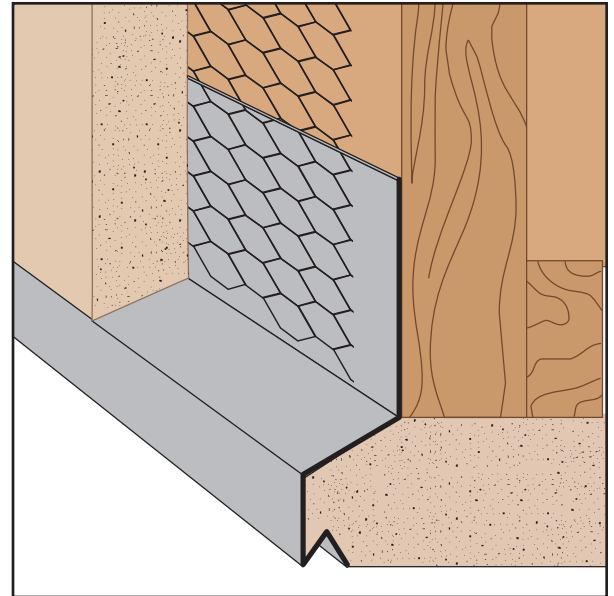
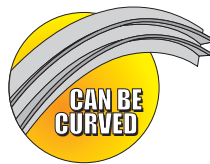


NTD: #2 Drip

- No Weep Holes
- Available in Copper, Galvanized Steel, Zinc, Stainless Steel or Aluminum

A plaster drip screed that helps align the soffit to give it a clean, straight edge at the fascia/soffit line. Provides a unique 3/4" "flush" reveal at the fascia.

Note: Factory curving this item is limited. Please consult the factory for information.

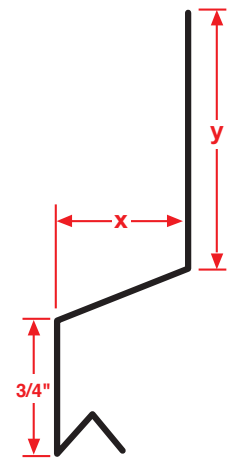


Length	X Size	Y Size
10'	7/8"	1 3/4"
	1 3/8"	3 1/2"

Materials:

- Copper (24ga. - 0.0216" - 16oz)
- Galvanized Steel (26ga. - 0.0217" - G90)
- Zinc (24ga. - 0.0200" - #190)
- Stainless Steel (26ga. - 0.0187" - SAE 304)
 - #2B (Dull Finish)
 - #4 (Brushed Finish)
 - #8 (Mirror Finish)
- Aluminum (22ga. - 0.0253" - 5052 H32)

Note: Standard length is 10 feet.
 Additional lengths available upon request.



ASTM Codes:

- A580M (Stainless Steel)
- A653/A653M (Galvanized Coating)
- A924 (Galvanized Coating)
- B152/B152M (Copper)
- B209 (Aluminum Sheet)
- B69 (Zinc)
- C1047 (Drywall)
- C1063 (Accessories)
- C841 (Interior Furring and Lathing)

