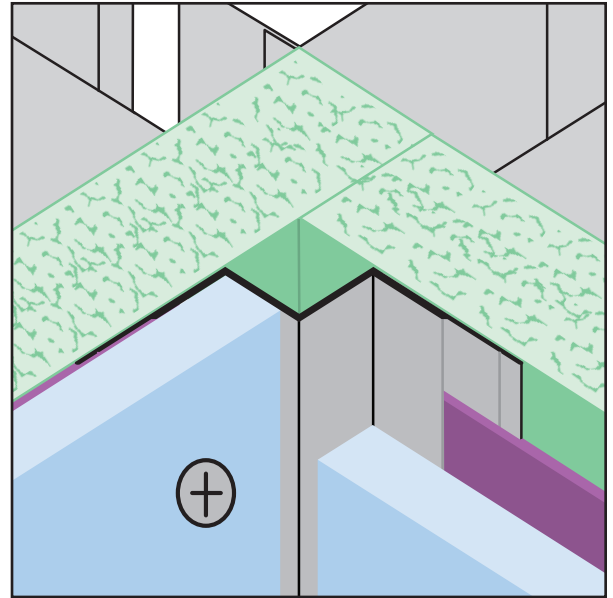




1-87-STOCKTON
 FAX: (702) 651-0948
 office@stocktonproducts.com
 FaceBook.com/stocktonproducts
 www.StocktonProducts.com

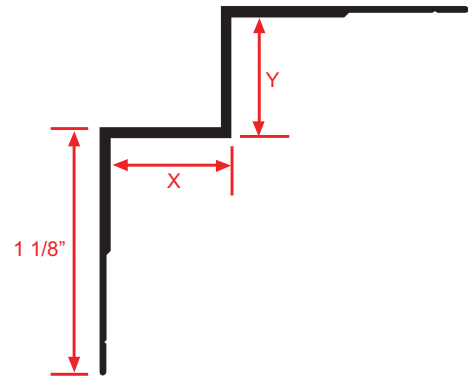
IC-FCB: Inside Corner for Fiber Cement Board

- **Now Available Primed**
 Used in an inside corner condition where two fiber cement boards meet.



| KEY | |
|-----|--------------------|
| | PLASTER/STUCCO |
| | CONCRETE |
| | PLYWOOD |
| | WOOD |
| | FOAM |
| | WATERPROOF BARRIER |
| | WALL SHEATHING |
| | DRYWALL |
| | DRYWALL MUD |
| | FIBER CEMENT |

| Length | X Size | Y Size |
|--------|--------|--------|
| 10' | 1/2" | 1/2" |



Materials:

- Aluminum Alloy (6063 T-5)

Note: Standard length is 10 feet.
 Additional lengths available upon request.

ASTM Codes:

- B136 (Anodize Coating)
- B244 (Anodize Coating)
- C1063 (Accessories)
- D4214 (Paint Films)

