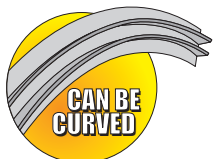
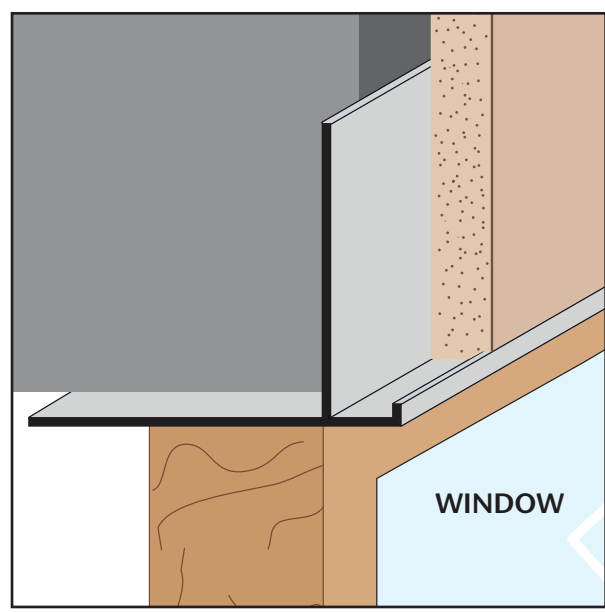




**1-87-STOCKTON**  
 FAX: (702) 651-0948  
 office@stocktonproducts.com  
 FaceBook.com/stocktonproducts  
 www.StocktonProducts.com

# FRWM: Facia/Recessed Window Molding

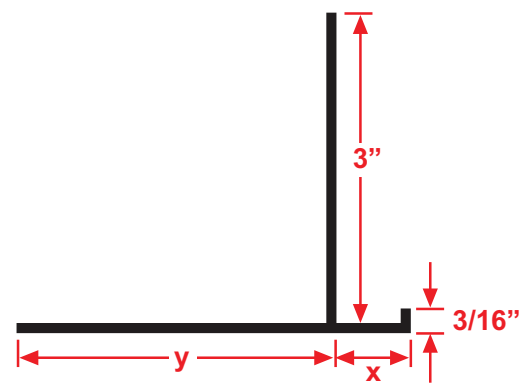
A plaster stop for fascia/soffit corner conditions that provides a 3 1/8" reveal leg for recessed windows. Can be used when a caulking leg is required for backer rod and sealant.



**KEY**

- PLASTER/STUCCO
- CONCRETE
- PLYWOOD
- WOOD
- FOAM
- WATERPROOF BARRIER
- WALL SHEATHING
- DRYWALL
- DRYWALL MUD
- FIBER CEMENT

Length	X Size	Y Size
10'	7/8"	3 1/8"
	1 3/8"	



**Materials:**

- Aluminum Alloy (6063 T-5)

**Note:** Standard length is 10 feet. Additional lengths available upon request.

**ASTM Codes:**

- B136 (Anodize Coating)
- B244 (Anodize Coating)
- C1063 (Accessories)
- D4214 (Paint Films)
- B221-14 (Aluminum)

