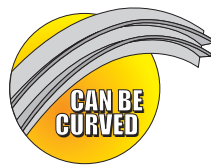
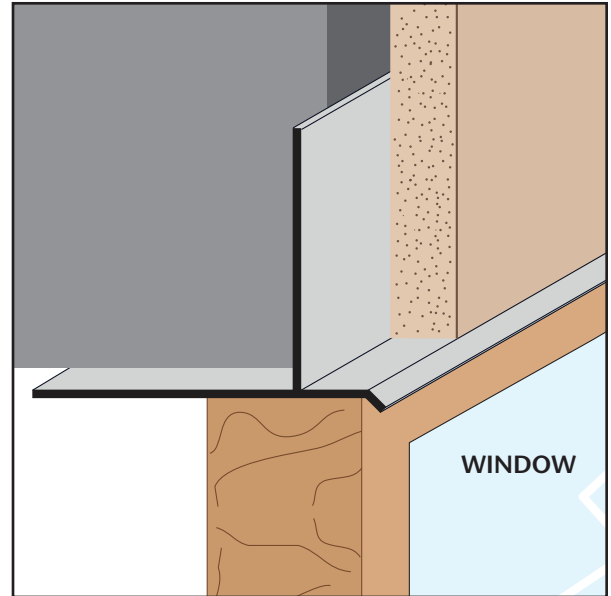


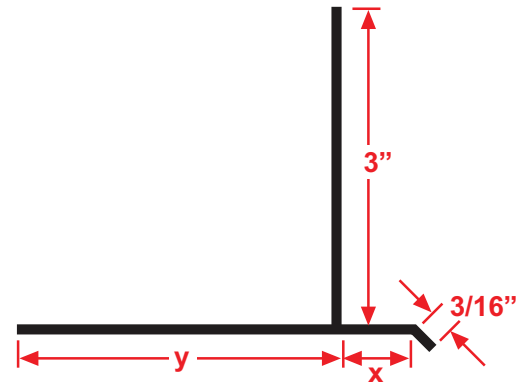
FRWDM: Facia/Recessed Window Drip Molding

A plaster stop for fascia/soffit corner conditions that provides a 3 1/8" reveal leg with a drip edge for recessed window conditions where a drip edge is required. Can be also be used when a caulking leg is required for backer rod and sealant.



KEY	
	PLASTER/STUCCO
	CONCRETE
	PLYWOOD
	WOOD
	FOAM
	WATERPROOF BARRIER
	WALL SHEATHING
	DRYWALL
	DRYWALL MUD
	FIBER CEMENT

Length	X Size	Y Size
10'	7/8"	3 1/8"
	1 3/8"	



Materials:

- Aluminum Alloy (6063 T-5)

Note: Standard length is 10 feet. Additional lengths available upon request.

ASTM Codes:

- B136 (Anodize Coating)
- B244 (Anodize Coating)
- C1063 (Accessories)
- D4214 (Paint Films)
- B221-14 (Aluminum)

