



PRODUCTS™

1-87-STOCKTON

FAX: (702) 651-0948

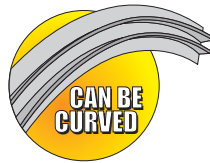
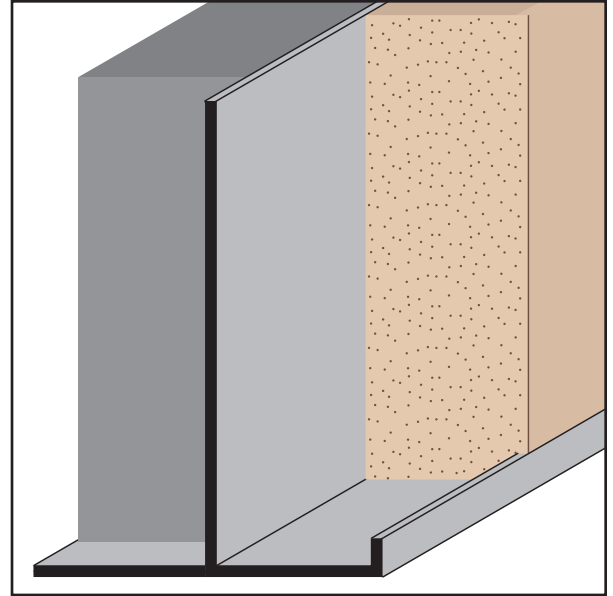
office@stocktonproducts.com

FaceBook.com/stocktonproducts

www.StocktonProducts.com

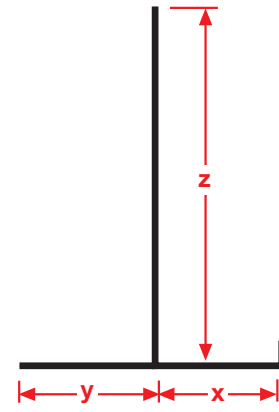
FCM: Fascia Corner Molding

A plaster stop for fascia/soffit corner conditions that provides a reveal on the soffit portion.



KEY	
	PLASTER/STUCCO
	CONCRETE
	PLYWOOD
	WOOD
	FOAM
	WATERPROOF BARRIER
	WALL SHEATHING
	DRYWALL
	DRYWALL MUD
	FIBER CEMENT

Length	X Size	Y Size	Z Size
10'	3/4"	7/8"	2 3/16"



Materials:

- Aluminum Alloy (6063 T-5)

Note: Standard length is 10 feet. Additional lengths available upon request.

ASTM Codes:

- B136 (Anodize Coating)
- B244 (Anodize Coating)
- C1063 (Accessories)
- D4214 (Paint Films)
- B221-14 (Aluminum)

