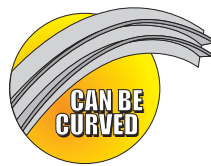
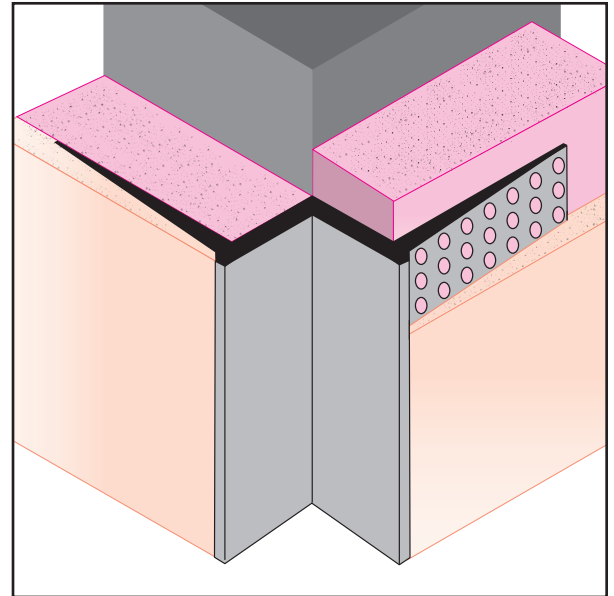




**1-87-STOCKTON**  
 FAX: (702) 651-0948  
 office@stocktonproducts.com  
 FaceBook.com/stocktonproducts  
 www.StocktonProducts.com

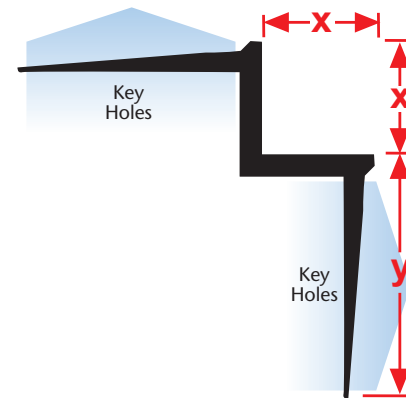
## DRMW: W Corner Reveal

"W" style drywall molding with taping flanges that creates an inverted corner for setbacks, stepdowns and other special drywall conditions. Includes key holes for proper plaster adhesion.



KEY	
	PLASTER/STUCCO
	CONCRETE
	PLYWOOD
	WOOD
	FOAM
	WATERPROOF BARRIER
	WALL SHEATHING
	DRYWALL
	DRYWALL MUD
	FIBER CEMENT

Length	X Size	Y Size
10'	1/2"	7/8"
	5/8"	



### Materials:

- Aluminum Alloy (6063 T-5)

**Note:** Standard length is 10 feet.  
 Additional lengths available upon request.

### ASTM Codes:

- B136 (Anodize Coating)
- B244 (Anodize Coating)
- C1063 (Accessories)
- D4214 (Paint Films)
- B221-14 (Aluminum)

