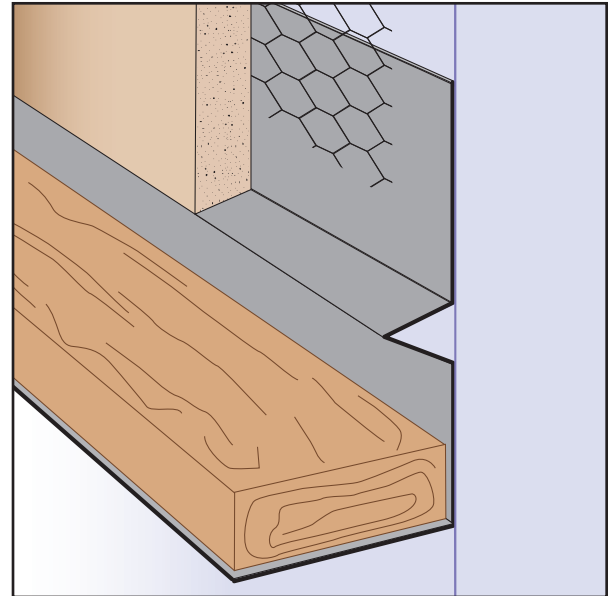


# DKD: Deck Diato

- Superior Moisture Protection™
- Available in Copper, Galvanized Steel, Zinc, Stainless Steel or Aluminum

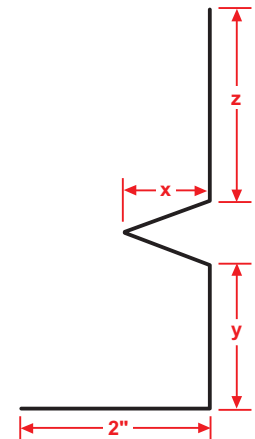
Deck Diato combines a plaster stop for conventional 3-coat stucco and pan flashing at a wall/deck condition where a plaster stop and flashing are required. Matching factory miter-cut, solid-soldered inside and outside corners are available, giving you moisture management confidence throughout the entire installation.



**KEY**

- PLASTER/STUCCO
- CONCRETE
- PLYWOOD
- WOOD
- FOAM
- WATERPROOF BARRIER
- WALL SHEATHING
- DRYWALL
- DRYWALL MUD
- FIBER CEMENT

Length	X Size	Y Size	Z Size
10'	3/4"	3/4"	2"
	7/8"	1 1/2"	3"
	1 3/8"	2"	4"
		2 1/2"	3"



### Materials:

- Copper (24ga. - 0.0216" - 16oz)
- Galvanized Steel (26ga. - 0.0217" - G90)
- Zinc (24ga. - 0.0200" - #190)
- Stainless Steel (26ga. - 0.0187" - SAE 304)
  - #2B (Dull Finish)
  - #4 (Brushed Finish)
  - #8 (Mirror Finish)
- Aluminum (22ga. - 0.0253" - 5052 H32)

**Note:** Standard length is 10 feet.  
 Additional lengths available upon request.

### ASTM Codes:

- A580M (Stainless Steel)
- A653/A653M (Galvanized Coating)
- A924 (Galvanized Coating)
- B152/B152M (Copper)
- B209 (Aluminum Sheet)
- B69 (Zinc)
- C1047 (Drywall)
- C1063 (Accessories)
- C841 (Interior Furring and Lathing)

