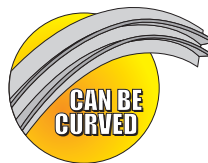
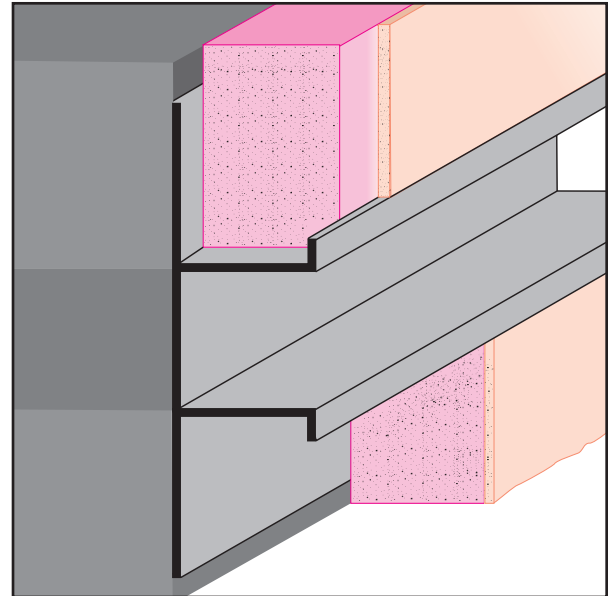




# DCS: Drywall Channel Screed

- Available With 1/8" x 1" Vent Slots or No Vents

Drywall version of the plaster channel screed used to create a decorative reveal & to separate dissimilar materials. Used with one-coat stucco and direct applied systems. Available with 1/8" weep holes.



| KEY |                    |
|-----|--------------------|
|     | PLASTER/STUCCO     |
|     | CONCRETE           |
|     | PLYWOOD            |
|     | WOOD               |
|     | FOAM               |
|     | WATERPROOF BARRIER |
|     | WALL SHEATHING     |
|     | DRYWALL            |
|     | DRYWALL MUD        |
|     | FIBER CEMENT       |

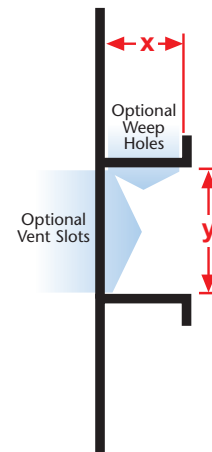
| Length | X Size | Y Size |
|--------|--------|--------|
| 10'    | 1/2"   | 1/2"   |
|        | *5/8"  | 3/4"   |
|        |        | 1"     |
|        |        | 1 1/2" |
|        |        | 2"     |
|        |        | 3"     |
|        |        | 4"     |

\*Not available with a 1 1/2" Y size.

### Materials:

- Aluminum Alloy (6063 T-5)

**Note:** Standard length is 10 feet. Additional lengths available upon request.



### ASTM Codes:

- B136 (Anodize Coating)
- B244 (Anodize Coating)
- C1063 (Accessories)
- D4214 (Paint Films)
- B221-14 (Aluminum)

