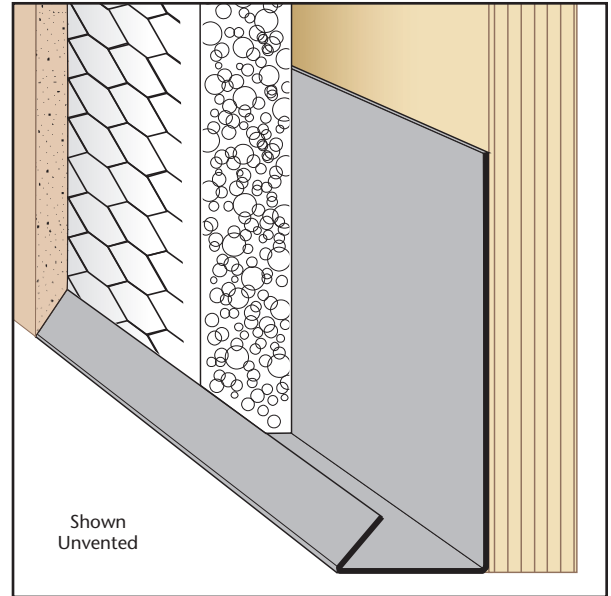
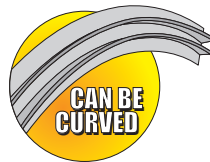


CSB: Casing Starter Bead

- Superior Moisture Protection™
- Available With 1/8", 1/2" Weep Holes or No Holes
- Available in Copper, Galvanized Steel, Zinc, Stainless Steel or Aluminum

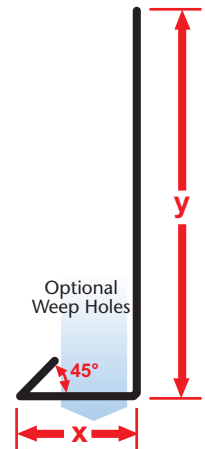
A stop used as a starting track for EIFS systems. Matching factory miter-cut, solid-soldered inside and outside corners are available, giving you moisture management confidence throughout the entire installation.



| Length | X Size | Y Size |
|--------|--------|--------|
| 10' | 3/8" | 1 1/2" |
| | 1/2" | 2" |
| | 5/8" | 3 1/2" |
| | 3/4" | |
| | 7/8" | |
| | 1" | |
| | 1 1/8" | |
| | 1 1/4" | |
| | 1 3/8" | |
| | 1 1/2" | |
| | 1 5/8" | |
| | 1 3/4" | |
| | 2" | |
| | 2 1/2" | |

KEY

- PLASTER/STUCCO
- CONCRETE
- PLYWOOD
- WOOD
- FOAM
- WATERPROOF BARRIER
- WALL SHEATHING
- DRYWALL
- DRYWALL MUD
- FIBER CEMENT



Materials:

- Copper (24ga. - 0.0216" - 16oz)
- Galvanized Steel (26ga. - 0.0217" - G60*)
- Zinc (24ga. - 0.0200" - #190)
- Stainless Steel (26ga. - 0.0187" - SAE 304)
 - #2B (Dull Finish)
 - #4 (Brushed Finish)
 - #8 (Mirror Finish)
- Aluminum (22ga. - 0.0253" - 5052 H32)

Note: Standard length is 10 feet.
 Additional lengths available upon request.
Note: *G90 available upon request

ASTM Codes:

- A580M (Stainless Steel)
- A653/A653M (Galvanized Coating)
- A924 (Galvanized Coating)
- B152/B152M (Copper)
- B209 (Aluminum Sheet)
- B69 (Zinc)
- C1047 (Drywall)
- C1063 (Accessories)
- C841 (Interior Furring and Lathing)

