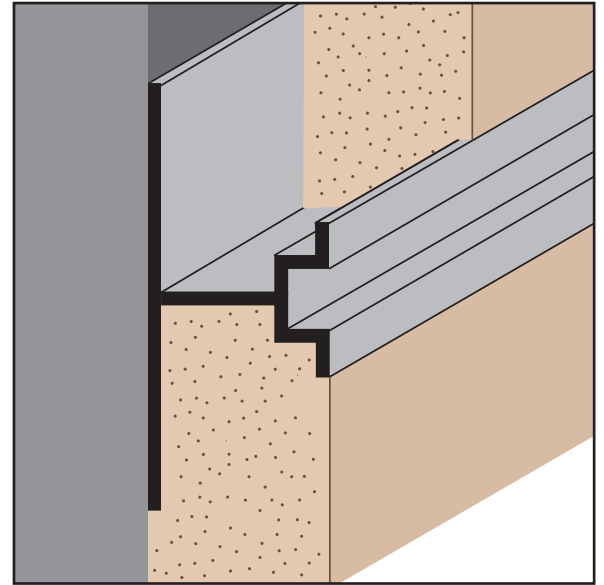
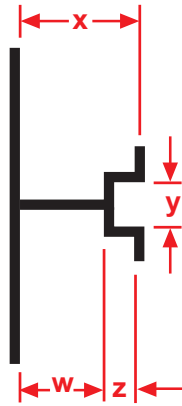
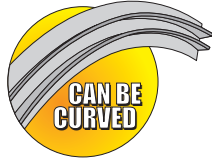




EXTRUDED ALUMINUM

PCS 75-25/25: Plaster Channel Screed 75-25/25

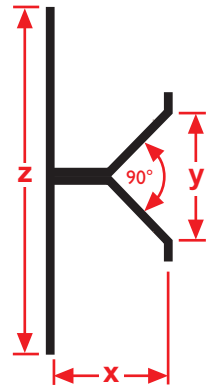
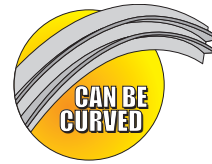
Plaster channel screed with minimal reveal width and ground depth for conditions that require a control joint with a small reveal.



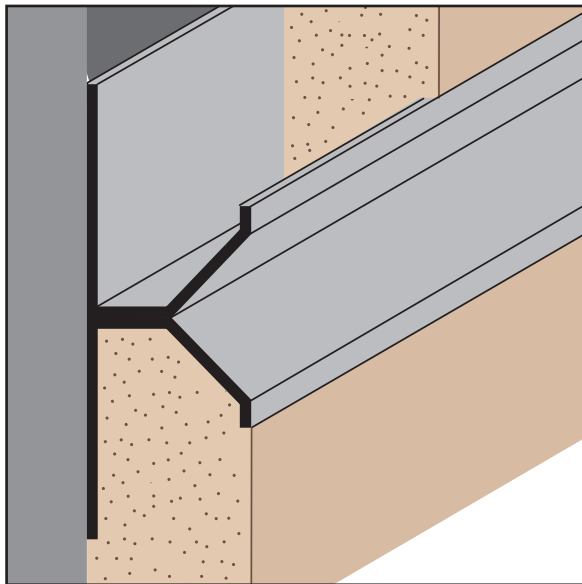
| Length | W Size | X Size | Y Size | Z Size |
|--------|--------|--------|--------|--------|
| 10' | 1/2" | 3/4" | 1/4" | 1/4" |

PCS 75 Short V: Plaster Channel Screed Short V

A plaster channel screed that creates a unique 90° "V" shaped reveal.

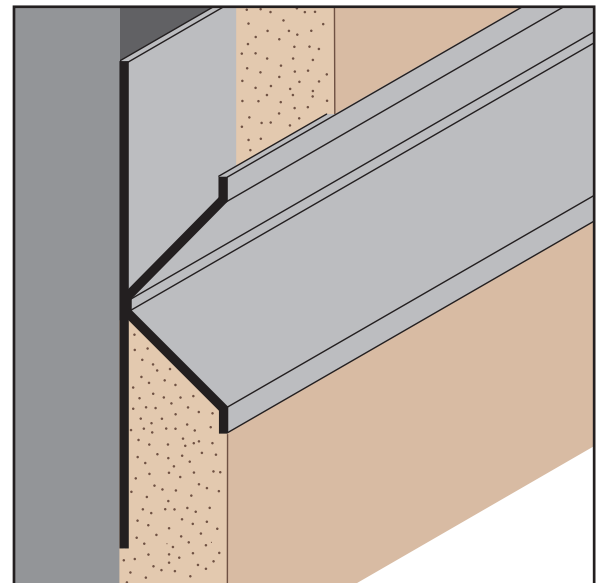
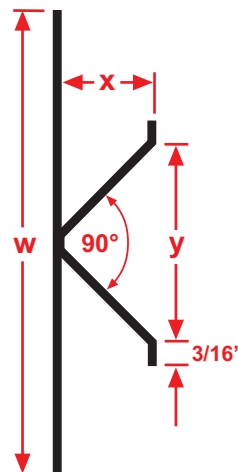
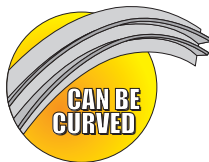


| Length | X Size | Y Size | Z Size |
|--------|--------|--------|--------|
| 10' | 1/2" | 3/4" | 2 7/8" |
| | 3/4" | | |



PCS 75 Wide V: Plaster Channel Screed Wide V

A plaster channel screed that creates a unique, wide 90° "V" shaped reveal.



| Length | W Size | X Size | Y Size |
|--------|--------|--------|--------|
| 10' | 3 5/8" | 3/4" | 1 1/2" |