

EXTRUDED ALUMINUM

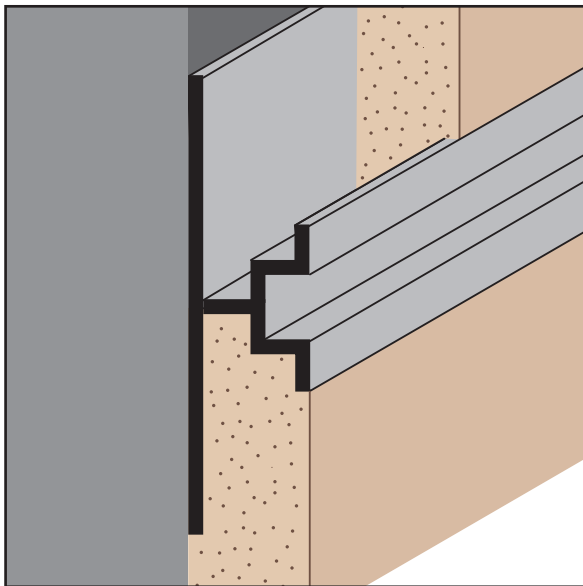
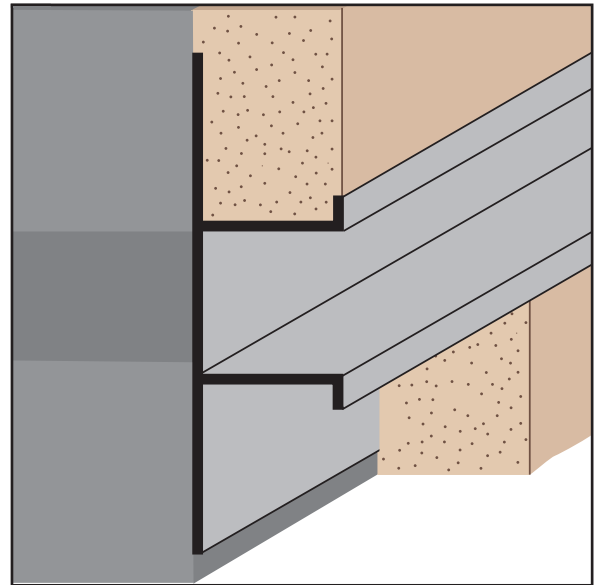
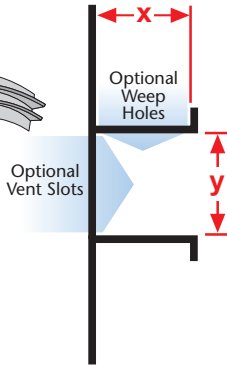
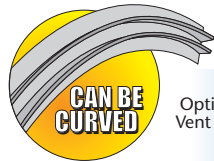


PCS: Plaster Channel Screed

• Available With 1/8" x 1" Vent Slots or No Vents
 A decorative reveal used as a plaster stop/control screed for conventional 3-coat stucco to separate dissimilar materials and/or to create aesthetically pleasing shadow lines on the exterior walls, ceilings and soffits. Available with 1/8" weep holes.

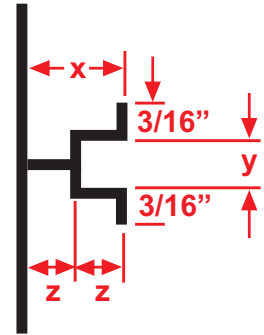
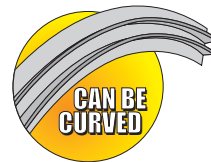
- Note:** *Venting is not available on the 1/2" reveal.
- Note:** **1 1/2" X Size available in 1 1/2" Y Size only.
- Note:** ***Available in 3/4" Y Size only.

Length	X Size	Y Size
10'	3/4"	*1/2"
	1"	3/4"
	**1 1/2"	1"
	***1 3/8"	1 1/2"
		2"
		2 1/2"
		3"
		4"
		6"



PCS 50-25/25: Plaster Channel Screed 50-25/25

Plaster channel screed with minimal reveal width and ground depth for conditions that require a control joint with a small reveal for 1/2" of stucco over block.



Length	X Size	Y Size	Z Size
10'	1/2"	1/4"	1/4"

PCS 75-2: Plaster Channel Screed 75-2 Piece

• Available With 1/8" x 1" Vent Slots or No Vents
 A two-piece version of the PCS where a "true" expansion joint is required. In a double stud condition, this molding is typically used in a horizontal condition at floor lines where deflection is an issue. 1/8" weep holes available.

Length	X Size	Y Size
10'	1/2"	1/4"
	3/4"	1/2"
		3/4"
		1"
		2"

