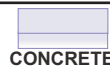


# EXTRUDED ALUMINUM

KEY



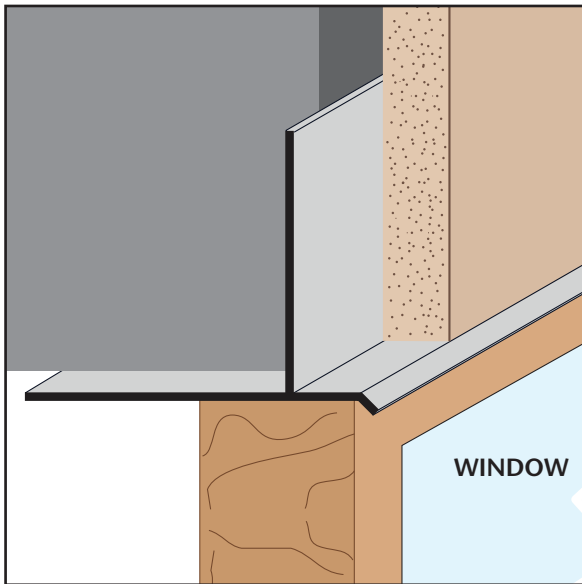
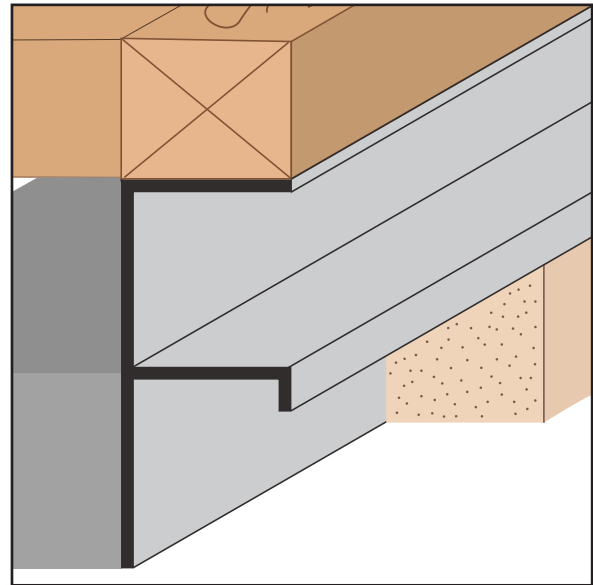
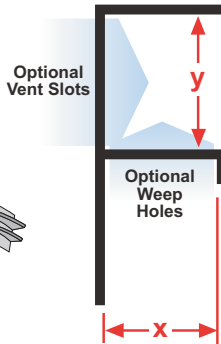
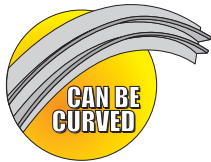
## FPM: F Plaster Molding

- Available With 1/8" x 1" Vent Slots or No Vents

A plaster stop/control screed for conventional 3-coat stucco, used at the top or base of columns, the top of walls at the ceiling, or at the base to create a reveal. Also used at the top of windows to permit the continuation of a horizontal reveal at the window line. Available with 1/8" weep holes.

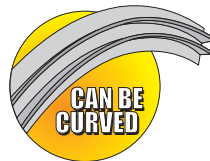
**Note:** \*1 3/8" X Size available in 3/4" Y Size only.

Length	X Size	Y Size
10'	3/4"	1/2"
	*1 3/8"	3/4"
		1"
		1 1/2"
		2"
	2 1/2"	3"
		4"

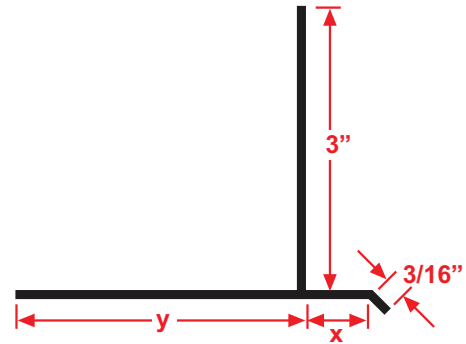


## FRWDM: Facia/Recessed Window Drip Molding

A plaster stop for fascia/soffit corner conditions that provides a 3 1/8" reveal leg with a drip edge for recessed window conditions where a drip edge is required. Can be also be used when a caulking leg is required for backer rod and sealant.

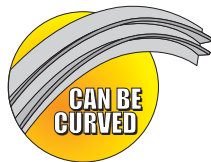


Length	X Size	Y Size
10'	7/8"	3 1/8"
	1 3/8"	



## FRWM: Facia/Recessed Window Molding

A plaster stop for fascia/soffit corner conditions that provides a 3 1/8" reveal leg for recessed windows. Can be used when a caulking leg is required for backer rod and sealant.



Length	X Size	Y Size
10'	7/8"	3 1/8"
	1 3/8"	

