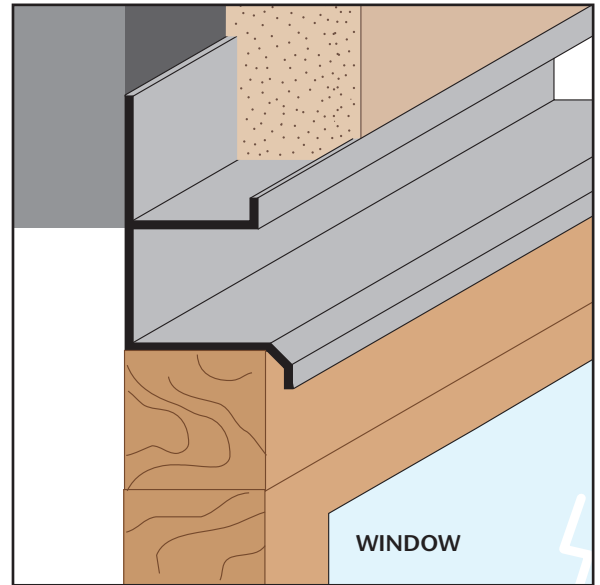
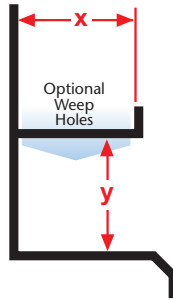
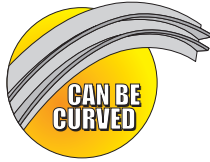




EXTRUDED ALUMINUM

F-D 75-75: F Drip Molding

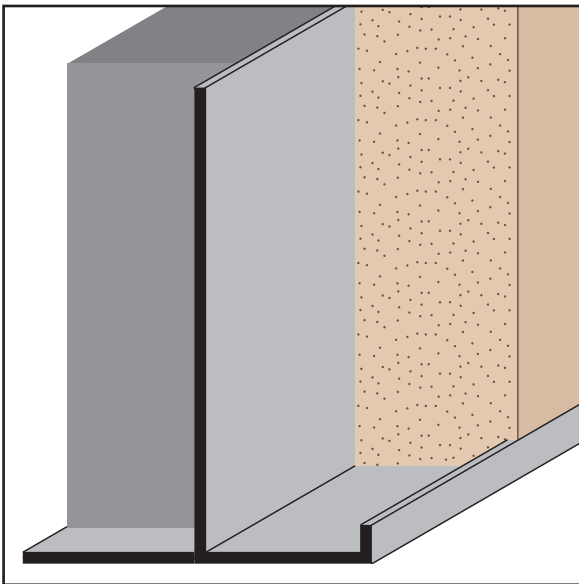
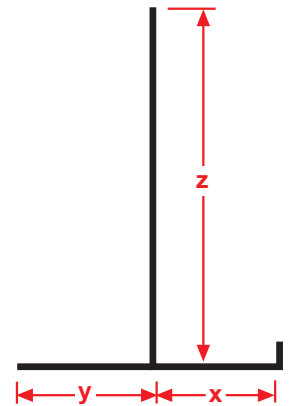
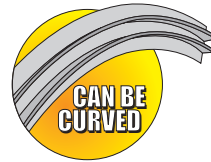
Provides a plaster stop/drip molding with an aesthetic reveal for window heads, tops of door frames and plate conditions where a drip edge is required. Available with 1/8" weep holes.



Length	X Size	Y Size
10'	3/4"	3/4"
	1 3/8"	

FCM: Fascia Corner Molding

A plaster stop for fascia/soffit corner conditions that provides a reveal on the soffit portion.



Length	X Size	Y Size	Z Size
10'	3/4"	7/8"	2 3/16"

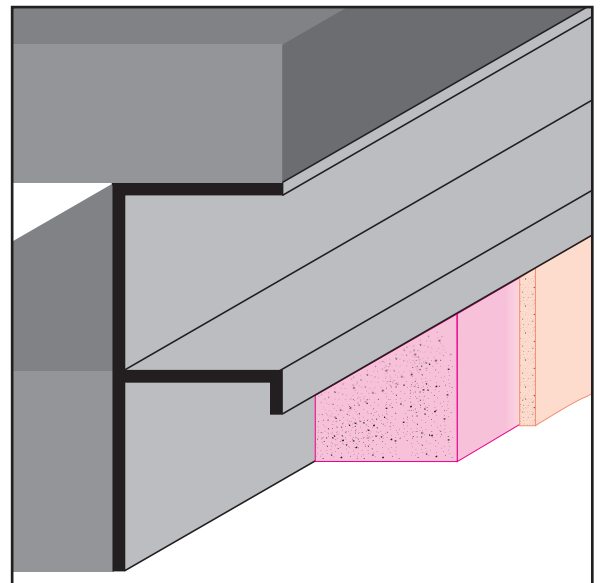
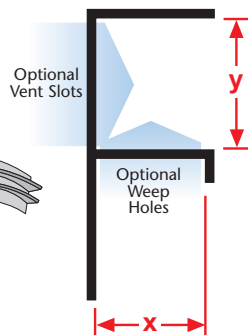
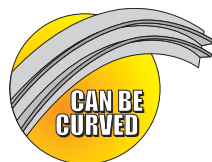
FDM: F Drywall Molding

- Available With 1/8" x 1" Vent Slots or No Vents

A drywall stop/control screed for drywall, used at the top or base of columns, the top of walls at the ceiling, or at the base to create a reveal. Also used at the top of windows to permit the continuation of a horizontal reveal at the window line. Available with 1/8" weep holes.

Note: *Not available with a 1 1/2" Y size.

Note: **Available on 1/2" reveal.



Length	X Size	Y Size
10'	1/2"	**1/2"
	*5/8"	3/4"
		1"
		1 1/2"
		2"
		3"
		4"