



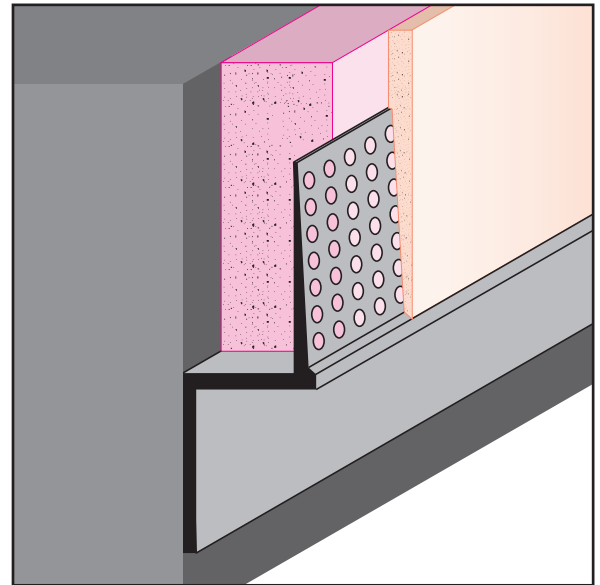
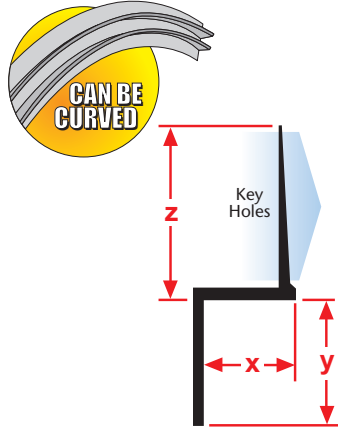
EXTRUDED ALUMINUM

DRMZ: Z Wall Reveal

• Available With 1/8" x 1" Vent Slots or No Vents
 "Z" style with a taping flange that provides a reveal and a termination point for drywall at door frames, windows and wall bases. Includes key holes for proper plaster adhesion.

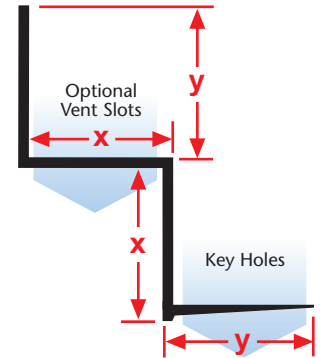
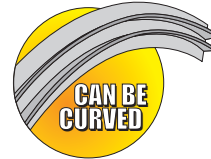
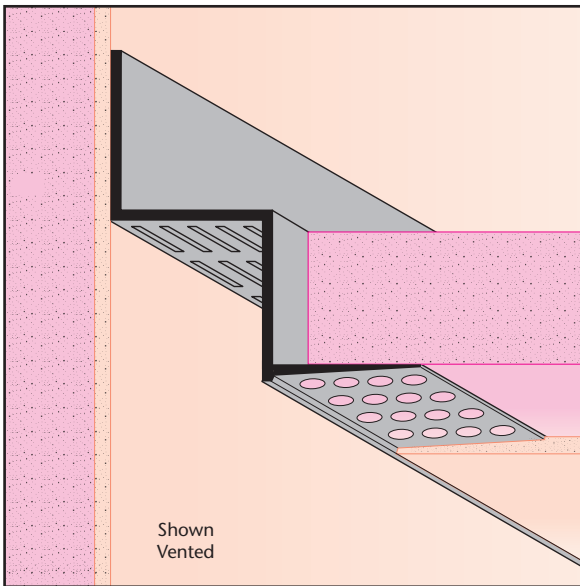
Note: Not all X, Y and Z combinations are available. Please contact factory for details.

| Length | X Size | Y Size | Z Size |
|--------|--------|--------|--------|
| 10' | 1/4" | 1/8" | 7/8" |
| | 1/2" | 1/4" | |
| | 5/8" | 3/8" | |
| | | 1/2" | |
| | | 5/8" | |
| | | 3/4" | |
| | | 1" | |
| | 1 1/2" | 2" | |
| | | 3" | |
| | | 4" | |



DRWT: "W" Reveal

• Available With Vents or No Vents
 "W" style drywall molding with taping flange that creates a reveal at a wall/drywall ceiling condition. Includes key holes for proper plaster adhesion.



| Length | X Size | Y Size |
|--------|--------|--------|
| 10' | 3/4" | 3/4" |

DS: Drip Screed

• Available With 1/8" x 1" Vent Slots or No Vents
 An aesthetically pleasing drip screed for conventional 3-coat stucco that functions as a plaster stop/drip edge and creates a reveal at the fascia/soffit corner condition.

Note: *1 3/8" X Size available in 7/8" Y Size only.

Note: **2" not available vented.

Note: Not all X Sizes (Depth) or Y Sizes (Reveal) combinations are available. Please consult with customer service.

| Length | X Size | Y Size | Z Size |
|--------|---------|--------|--------|
| 10' | 7/8" | 3/4" | 7/8" |
| | *1 3/8" | 7/8" | |
| | | **2" | |
| | | 3" | |

