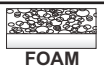
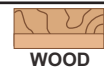
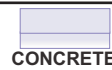


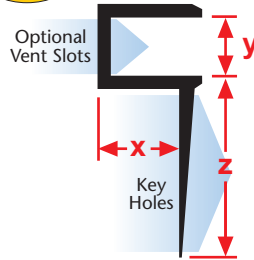
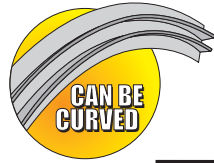
# EXTRUDED ALUMINUM

KEY

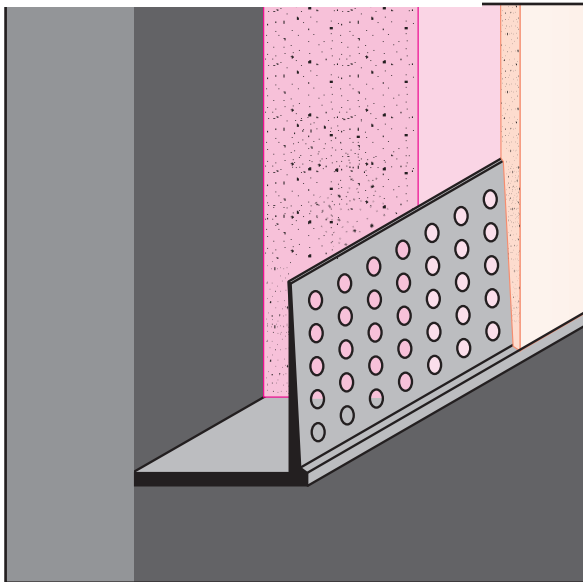
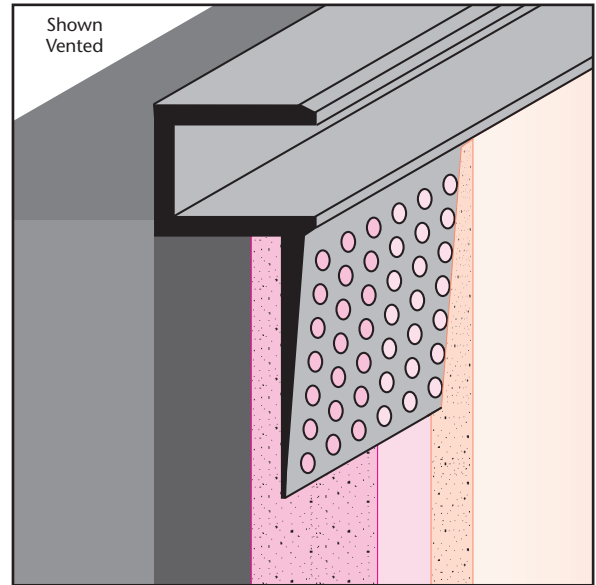


## DRMF: F Wall Reveal

• Available With 1/8" x 1" Vent Slots or No Vents  
 "F" style with a taping flange that creates a reveal and board termination point at tops and bases of walls and at door and window frames. Includes key holes for proper plaster adhesion.  
**Note:** Not all X Sizes (Depth) or Y Sizes (Reveal) combinations are available.  
 Please consult with customer service.

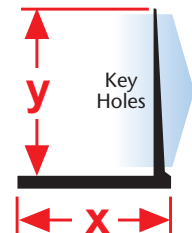
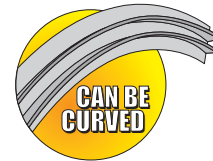


Length	X Size	Y Size	Z Size
10'	1/4"	1/8"	7/8"
	1/2"	1/4"	
	5/8"	3/8"	
		1/2"	
		5/8"	
		3/4"	
		1"	
		1 1/2"	
		2"	
		3"	



## DRML: Edge Trim

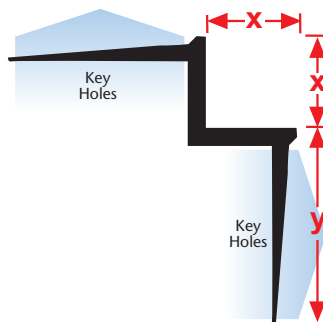
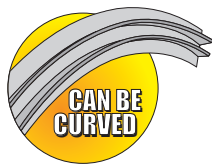
"L" style drywall molding with a taping flange that provides a drywall termination point by capping of the raw edge of the drywall board. Includes key holes for proper plaster adhesion.



Length	X Size	Y Size
10'	1/2"	7/8"
	5/8"	
	3/4"	
	1"	
	1 1/2"	
	2"	
	3"	
	4"	

## DRMW: W Corner Reveal

"W" style drywall molding with taping flanges that creates an inverted corner for setbacks, stepdowns and other special drywall conditions. Includes key holes for proper plaster adhesion.



Length	X Size	Y Size
10'	1/2"	7/8"
	5/8"	

