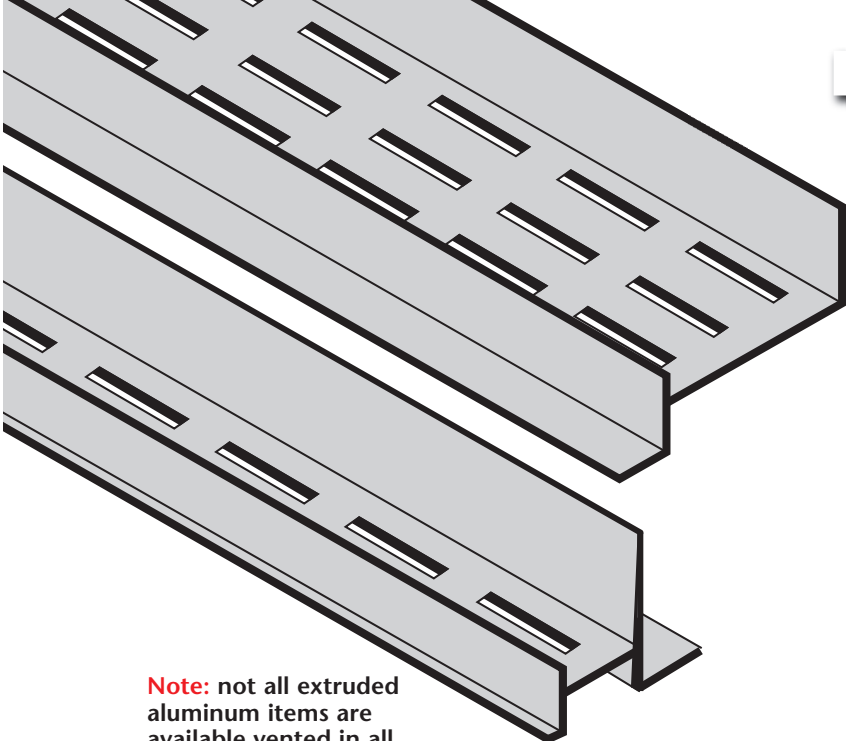


# EXTRUDED ALUMINUM



**Note:** not all extruded aluminum items are available vented in all size combinations. Please call 1-87-Stockton to verify availability.

## Ventilation

Many shapes are available vented to allow for air flow. All vent slots are 1/8" wide by 1" long, spaced 1 1/2" on center lengthwise. Multiple rows of vents are spaced laterally, 1/2" on center. Each lengthwise row of vent slots provides approximately one square inch of venting per lineal foot.

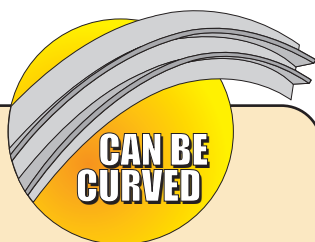
**Note:** The "V" designation in model numbers indicates vented ability.

Reveal width	Vent slots	Vent area per lineal foot (approx.)	Percent of area vented (approx.)
1/2"	1	1" square	15.0%
3/4"	1	1" square	12.5%
1"	1	1" square	9.4%
1 1/2"	2	2" square	12.5%
2"	3	3" square	14.1%
3"	5	5" square	14.3%
4"	5	5" square	14.5%
6"	10	10" square	20.8%

### Can Be Curved

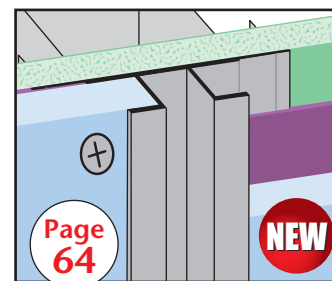
These products are designed so that they can be curved for installation. Gives you more options to create arched decorative reveals and more!

*Curving is limited. Please consult factory.*

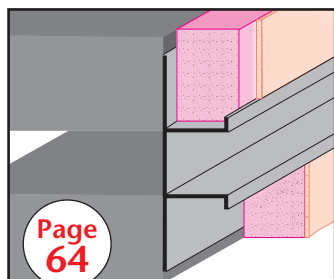


## Stockton Products' Extruded Aluminum

A comprehensive line of extruded aluminum products for drywall, plaster and stucco applications.

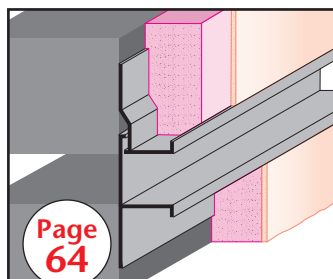


**CR-FCB:**  
Channel Reveal



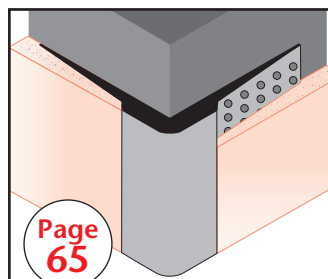
Page 64

**DCS:**  
Drywall Channel Screed



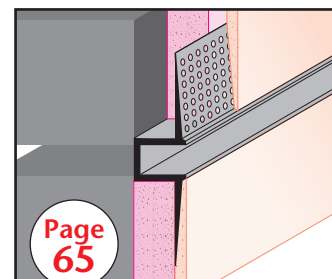
Page 64

**DCS 50-2:** Drywall Channel Screed 50-2 Piece



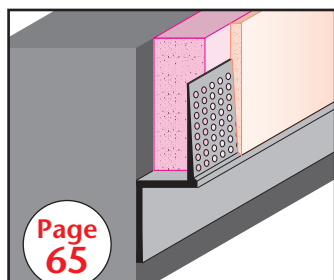
Page 65

**DMCT:**  
High Strength Corner Trim



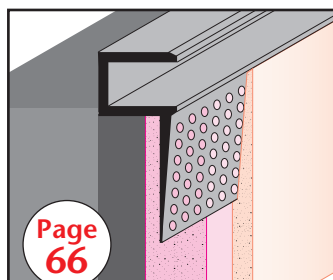
Page 65

**DRM:**  
Wall Reveal



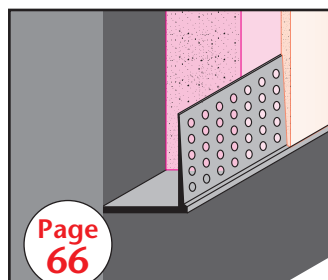
Page 65

**DRMB:**  
Reveal Base



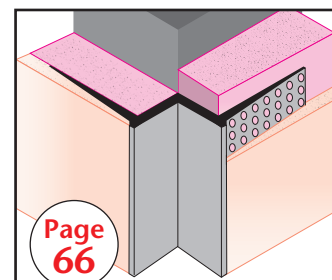
Page 66

**DRMF:**  
F Wall Reveal



Page 66

**DRML:**  
Edge Trim



Page 66

**DRMW:**  
W Corner Reveal