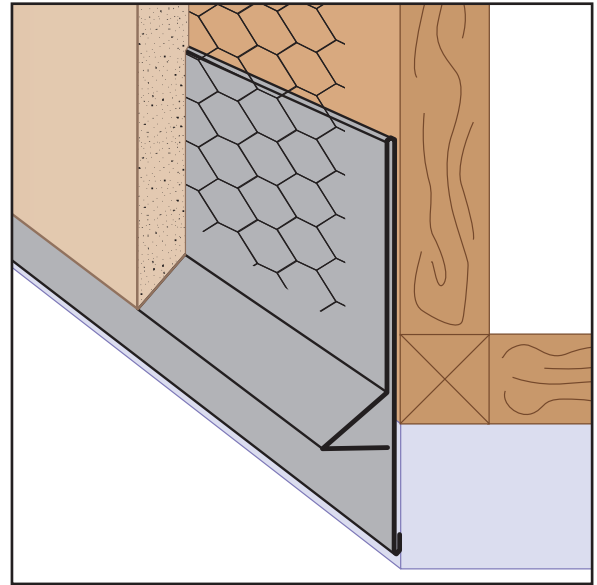
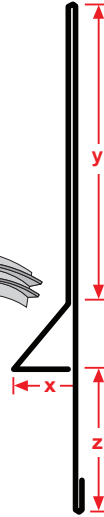
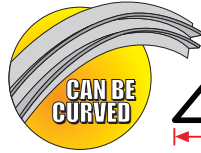


XLF: XL Foundation Screed

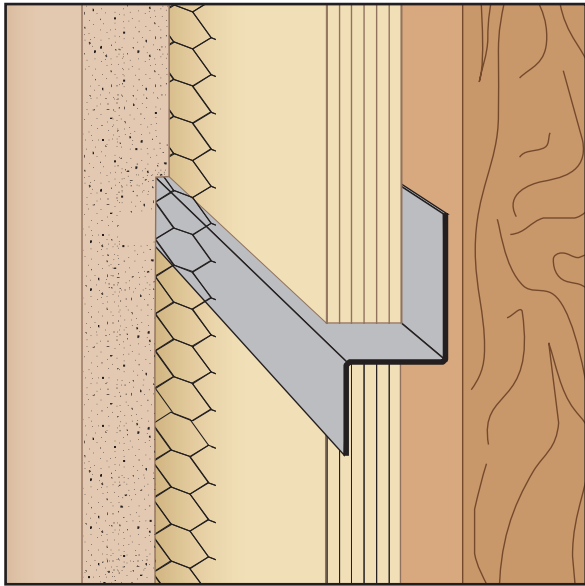
- Superior™ Moisture Protection
- Available in Copper, Galvanized Steel, Zinc, Stainless Steel or Aluminum

Stucco installation guidelines require stucco to be held up off of hardscape. Provides an extended back leg to protect waterproof membranes. Matching factory miter-cut, solid-soldered inside and outside corners are available, giving you moisture management confidence throughout the entire installation.

Note: Weep holes are available in some configurations. Please call for details.



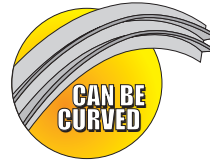
| Length | X Size | Y Size | Z Size |
|--------|--------|--------|--------|
| 10' | 1/2" | 2 1/2" | 2 1/2" |
| | 5/8" | 3 1/2" | 3" |
| | 3/4" | 4" | 3 1/2" |
| | 7/8" | 4 1/2" | 4" |
| | 1" | 5" | |
| | 1 3/8" | | |



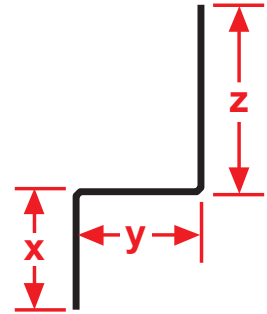
Z-T: Z-Trim

- Available in Copper, Galvanized Steel, Zinc, Stainless Steel or Aluminum

Used to properly seal and join two pieces of plywood and other conditions where a "Z" shape is required



| Length | X Size | Y Size | Z Size |
|--------|--------|--------|--------|
| 10' | 1/2" | 1/2" | 3/4" |
| | 1" | 5/8" | 1" |
| | 1 1/2" | 3/4" | 1 1/2" |
| | 2" | 1" | 2" |
| | | 1 1/2" | |



Did you know?

- Stockton Products can design and manufacture custom vents, reveals and other trim to your specifications in copper, galvanized steel, zinc, stainless steel or aluminum.
- Stockton Products has one of the broadest product offerings for moisture management. See the Superior™ Moisture Management Products profiles on page 11.