



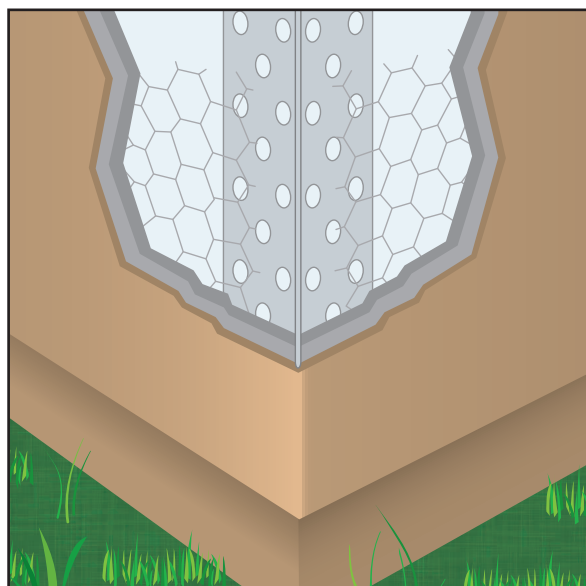
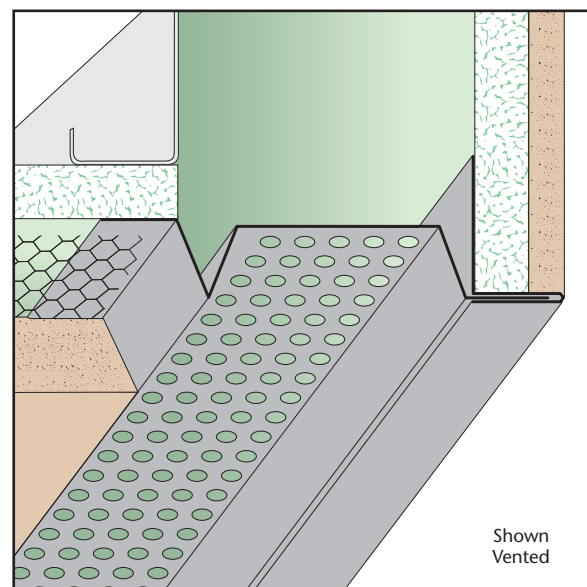
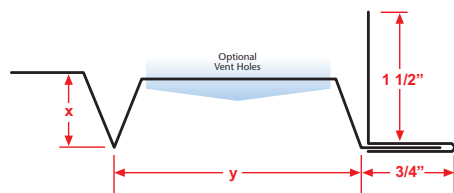
TPC: Two Piece Expansion Corner

- Available With 1/8", 1/4" Vent Holes or No Holes
- Available in Copper, Galvanized Steel, Zinc, Stainless Steel or Aluminum

A functional two piece product specifically designed for the fascia/soffit corner that provides a reveal and allows movement at this condition.

Note: Aluminum is not available with 1/8" vent holes.

Length	X Size	Y Size
10'	1/2"	3/4"
	3/4"	1"
	7/8"	1 1/2"
	1"	2"
	1 1/2"	2 1/2"
		3"
		3 1/2"
		4"
		4 1/2"

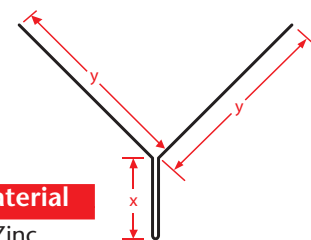


TRC: Tru-Corner™

- Available in Zinc or Stainless Steel

A solid metal trim that provides a sharp square exterior corner. Longer attachment legs help assure proper alignment to achieve a straight and true corner, particularly on irregular framing. Includes 1/4" diameter staggered key holes to aid in keying the stucco. Available in stainless steel and zinc for maximum anti-corrosive protection.

Note: Ground depth (X Sizes) and leg lengths (Y Sizes) can not be mixed. Sizes are as listed.



Length	X Size	Y Size	Material
10'	3/4" with	1 3/4" in	Zinc
	7/8" with	1 5/8" in	Zinc
	1 1/8" with	1 7/8" in	Zinc
	3/4" with	1 3/4" in	Stainless Steel
	7/8" with	1 5/8" in	Stainless Steel
	1 1/8" with	1 3/4" in	Stainless Steel
	1 3/8" with	2" in	Stainless Steel



TRM: T-Reveal Mold

- SolidGround® Design For Moisture Protection
- Available in Copper, Galvanized Steel, Zinc, Stainless Steel or Aluminum

One-piece SolidGround® design feature mitigates the concern of moisture penetration in a horizontal condition. Provides a reveal and plaster stop at parapet top and function as a depth screed. Can be used at ceiling to wall conditions when dealing with dissimilar materials. Matching factory miter-cut, solid-soldered inside and outside corners are available, giving you moisture management confidence throughout the entire installation.

Length	X Size	Y Size	Z Size
10'	3/4"	1"	1"
	7/8"	1 1/2"	1 1/2"
	1 1/4"	2"	2"
	1 3/8"	2 1/2"	2 1/2"

