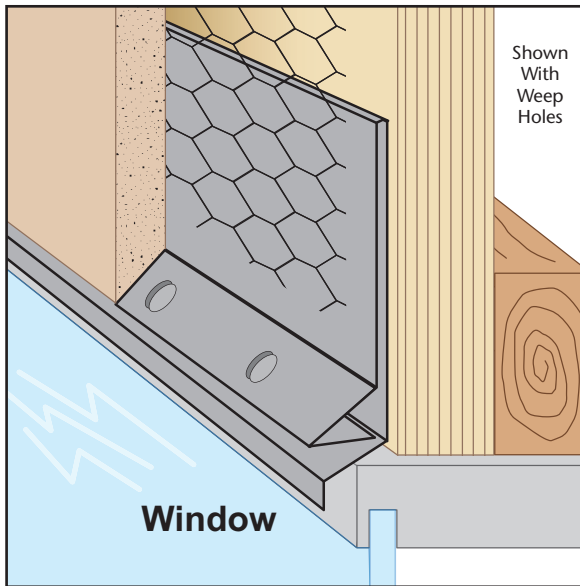
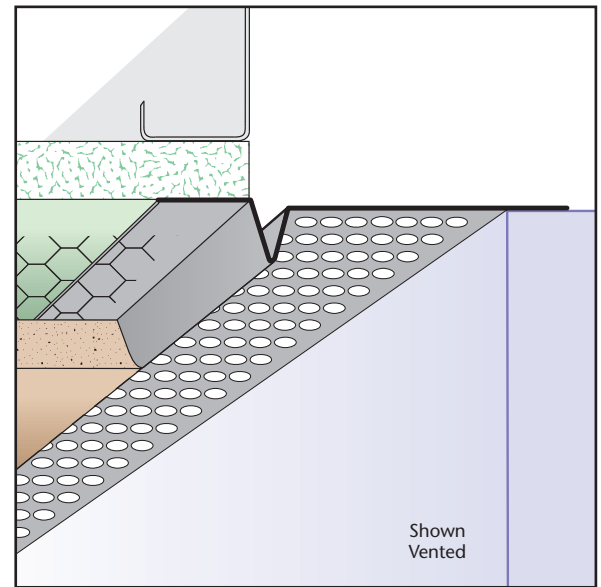
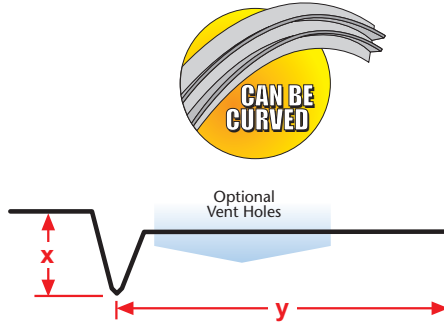


## SPS: Single Point Screed

- Available With 1/8", 1/4" Vent Holes or No Vent
- Available in Copper, Galvanized Steel, Zinc, Stainless Steel or Aluminum

Single pointed vent used at soffit/wall condition where uneven surfaces (such as split-faced block) exist providing perimeter airflow into the soffit. Available non-vented for use as a decorative reveal upon request.

Length	X Size	Y Size
10'	3/8"	3/4"
	1/2"	1"
	5/8"	1 1/2"
	3/4"	2"
	7/8"	2 1/2"
	1"	3"
	1 3/8"	3 1/2"
		4"
		4 1/2"
		5"
		5 1/2"
		6"

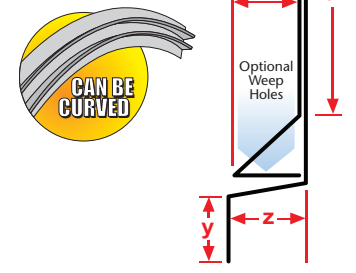


## SSF: Stucco Screed Flashing (#3)

- Superior™ Moisture Protection
- Available With 1/4" Weep Holes or No Holes
- Available in Copper, Galvanized Steel, Zinc, Stainless Steel or Aluminum

SSF combines a stucco screed and head flashing into one uniformed piece. Weep screed allows moisture to escape and travel over top of flashing. SSF provides ideal water management at window head, floor line and transition to dissimilar materials. Available with and without weep holes.

Length	X Size	Y Size	Z Size
10'	1/2"	3/4"	3/4"
	3/4"	1"	1"
	1"	1 1/4"	1 1/4"
	1 1/4"	1 1/2"	1 1/2"
	1 3/8"	1 3/4"	1 3/4"
		2"	2"
			2 1/2"
			3"



## SSM: Step Separation Mold

- Available With 1/8", 1/4" Vent Holes or No Holes
- Available in Copper, Galvanized Steel, Zinc, Stainless Steel or Aluminum

A versatile molding used primarily to separate either plaster or drywall from other materials.

Length	X Size	Y Size
10'	1/2"	3/4"
	5/8"	1"
	3/4"	1 1/2"
	7/8"	2"
	1"	2 1/2"
		3"
		3 1/2"
		4"
		4 1/2"

