



## SBS: Bug Stop™ Soffit Vent

*Patented*

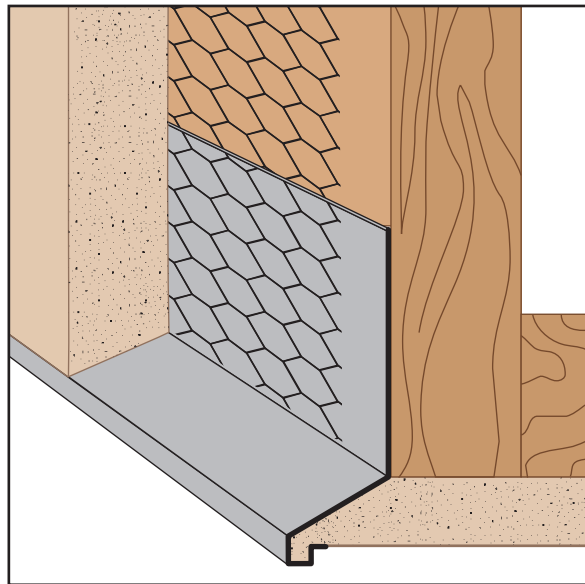
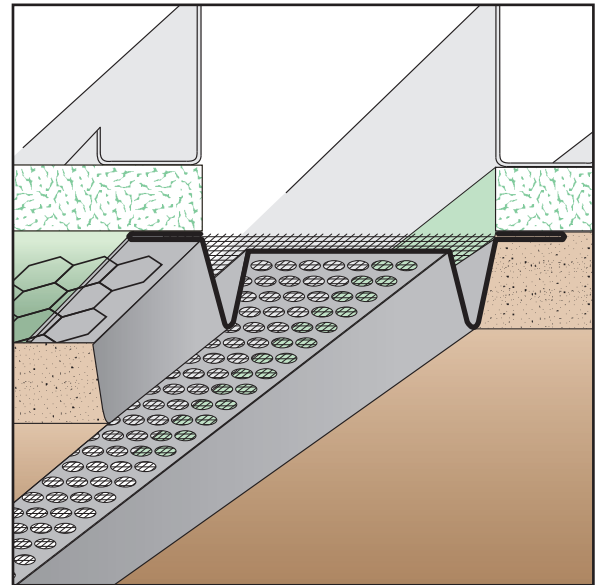
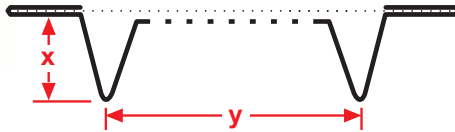
- Available with 1/8" and 1/4" Vent Holes
- Galvanized Steel Only

"Allows air in; keeps bugs out." All the same features and value of our standard SVR screed, but with the addition of 0.062, 16-16 (1/16") aluminum screen that protects against the entry of wasps, bees, termites and other pests.



**EXCLUSIVE**

| Length | X Size | Y Size |
|--------|--------|--------|
| 10'    | 1/2"   | 2"     |
|        | 3/4"   | 3"     |
|        | 7/8"   | 4"     |



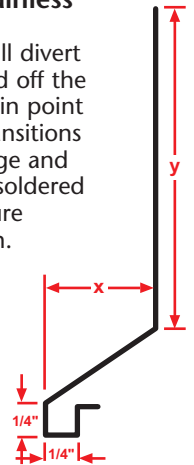
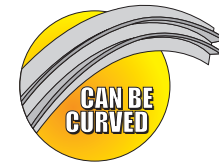
## SDC: Soffit Drip Corner (#12)

- Superior™ Moisture Protection
- No Weep Holes
- Available in Copper, Galvanized Steel, Zinc, Stainless Steel or Aluminum

SDC when used at a soffit or recessed window opening will divert water out through the solid slope leg. Water will then shed off the 1/4" drip edge. The drip edge channel also provides a tie-in point for the lath. Special drip molding for use at fascia/soffit transitions and recessed windows conditions that provides a drop edge and tie in point for the lath. Matching factory miter-cut, solid-soldered inside and outside corners are available, giving you moisture management confidence throughout the entire installation.

**Note:** Factory curving this item is limited. Please consult the factory for information.

| Length | X Size | Y Size |
|--------|--------|--------|
| 10'    | 5/8"   | 2 1/2" |
|        | 3/4"   | 3 1/2" |
|        | 7/8"   | 4"     |
|        | 1 3/8" |        |



## SES: Ember Stop™ Soffit Vent

*Patented*

- Galvanized Steel Only
- Allows air in while also designed for protection against ember entry. All the same features and value of our standard SVR screed, but with the addition of a 0.062, 16-16 (1/16") aluminum screen. Includes 1/8" vent holes.

Complies with section 706A, CBSC Wildfire Protection Provisions.

**EXCLUSIVE**

| Length | X Size | Y Size |
|--------|--------|--------|
| 10'    | 1/2"   | 2"     |
|        | 3/4"   | 3"     |
|        | 7/8"   | 4"     |

