

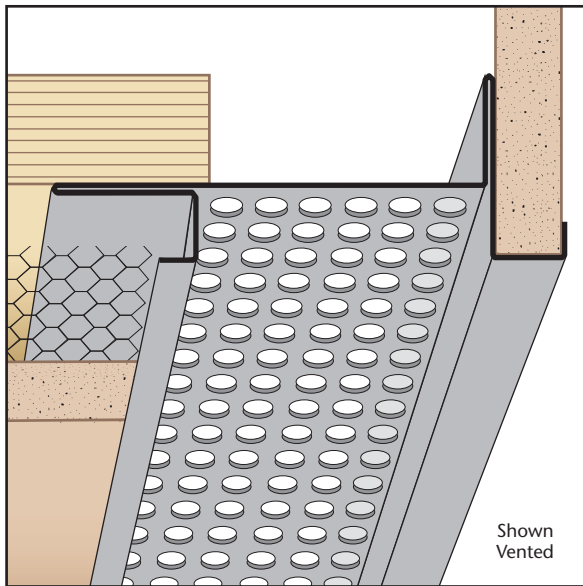
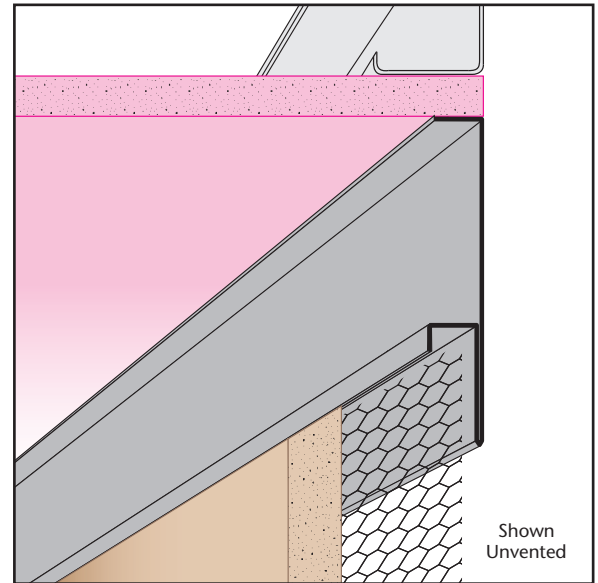
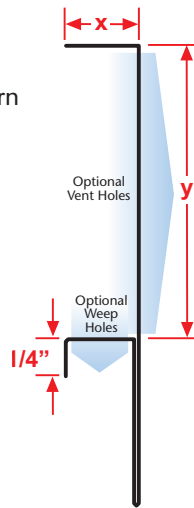
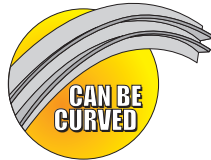


FRM: F Reveal Mold

- Available With 1/8", 1/4" Vent Holes or No Vent
- Available in Copper, Galvanized Steel, Zinc, Stainless Steel or Aluminum

Creates a decorative reveal at wall/ceiling conditions for stucco. Can be vented for perimeter air flow. Has a return key for screeding.

Length	X Size	Y Size
10'	1/2"	3/4"
	5/8"	1"
	3/4"	1 1/2"
	7/8"	2"
	1"	2 1/2"
	1 3/8"	3"
		3 1/2"
		4"



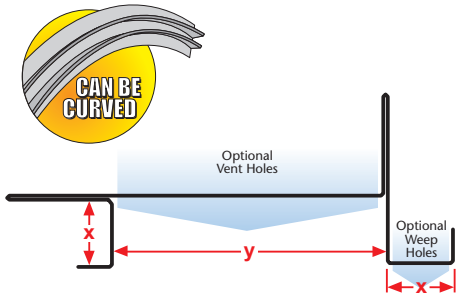
FSM: Fascia Soffit Mold

- Available With 1/8", 1/4" Vent Holes or No Vent
- Available in Copper, Galvanized Steel, Zinc, Stainless Steel or Aluminum

Creates a decorative reveal at fascia/soffit transition providing a small overhang drip edge. Has return keys for screeding of stucco. Extended attachment flanges provides area to overlay lathing. Can be vented for perimeter airflow into space above. Available with 1/8" weep holes.

Note: Aluminum is not available with 1/8" vent holes.

Length	X Size	Y Size
10'	1/2"	3/4"
	5/8"	1"
	3/4"	1 1/2"
	7/8"	2"
	1"	2 1/2"
	1 3/8"	3"



FTM: Fascia Transition Mold

- Available With 1/8", 1/4" Vent Holes or No Vent
- Available in Copper, Galvanized Steel, Zinc, Stainless Steel or Aluminum

Creates a fascia/soffit transition providing a small overhang to prevent moisture from migrating back to the soffit surface. Prevents water staining on plaster by creating a drip edge. Can be vented for perimeter airflow into space above the soffit. Available with 1/8" weep holes.

Note: Aluminum is not available with 1/8" vent holes.

Length	X Size	Y Size
10'	1/2"	3/4"
	5/8"	1"
	3/4"	1 1/2"
	7/8"	2"
	1"	2 1/2"
	1 3/8"	3"
		3 1/2"
		4"
		4 1/2"

