



EWC: Expansion Water-Resistant Channel - 2 pc.

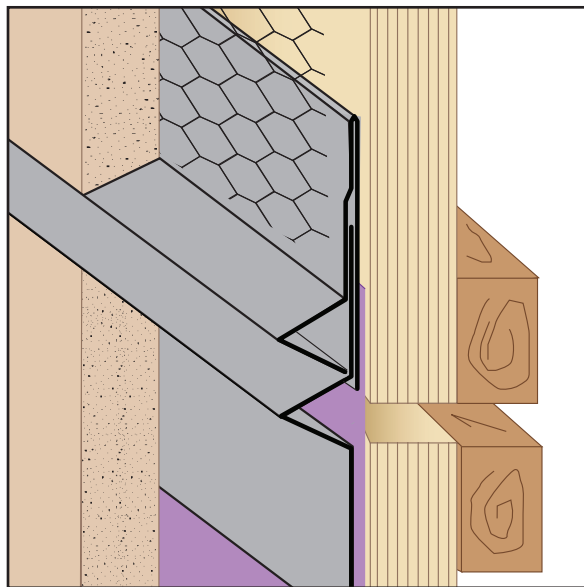
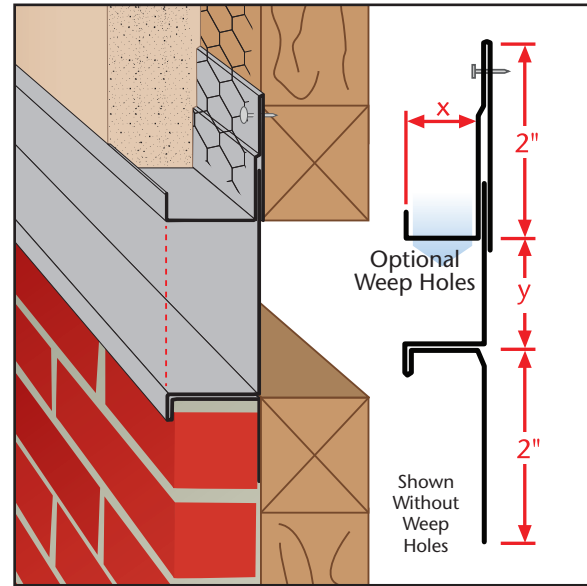
- Superior™ Moisture Protection
- SolidGround® Design For Moisture Protection
- Available With 1/8" Weep Holes or No Holes
- Available in Copper, Galvanized Steel, Zinc, Stainless Steel or Aluminum

The unique hem design stops moisture penetration in a horizontal condition. The two-piece design allows for movement. Matching factory miter-cut, solid-soldered inside and outside corners are available for most profiles. Special "Step" on the attachment leg provides a locator for correct placement of the fasteners and helps keep the molding laying flat on the wall.

Matching factory miter-cut, solid-soldered inside and outside corners are available, giving you moisture management confidence throughout the entire installation.

Note: Aluminum is not available with 1/8" vent holes.

Length	X Size	Y Size
10'	5/8"	1/4"
	3/4"	1/2"
	7/8"	3/4"
	1"	1"
	1 1/4"	1 1/2"
	1 3/8"	2"
	1 1/2"	



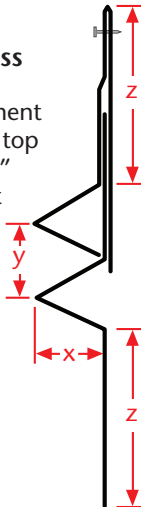
EWR: Expansion Water-Resistant Reveal - 2 pc.

- Available With 1/8" Weep Holes or No Holes
- Available in Copper, Galvanized Steel, Zinc, Stainless Steel or Aluminum

The dual function self-aligning expansion joint provides movement capability at floor line while allow moisture to release from the top ground and locks out moisture from the bottom. Special "Step" on the attachment leg provides a locator for correct placement of the fasteners and helps keep the molding laying flat on the wall.

Note: Aluminum is not available with 1/8" vent holes.

Length	X Size	Y Size	Z Size
10'	3/8"	1/2"	2 1/2"
	1/2"	3/4"	3"
	3/4"	1"	4"
	1"	1 1/2"	
	1 3/8"	2"	
		3"	



FDM: F-Drip Mold

- Available With 1/8" Weep Holes or No Holes
- Available in Copper, Galvanized Steel, Zinc, Stainless Steel or Aluminum

Provides a plaster stop/drip molding with an aesthetic reveal for window heads, top of doors frames and plate conditions where a drip function in desired.

Length	X Size	Y Size
10'	1/2"	1/2"
	3/4"	3/4"
	7/8"	1"
	1"	
	1 3/8"	

